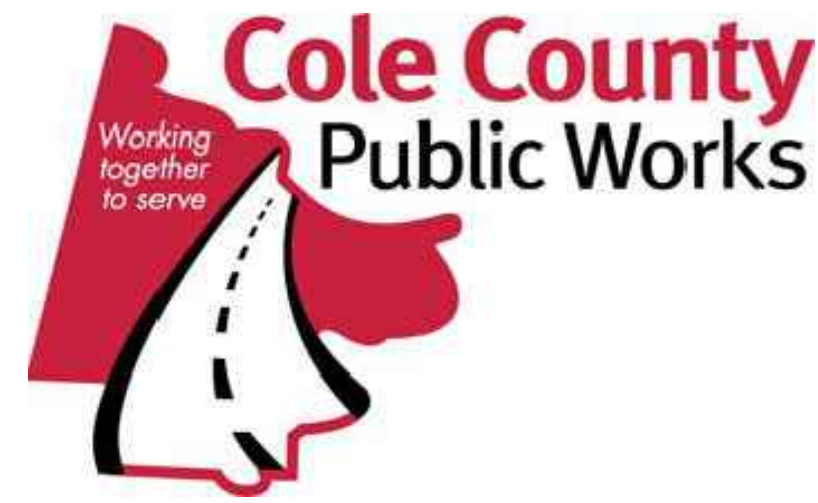


COLE COUNTY, MISSOURI DEPARTMENT OF PUBLIC WORKS

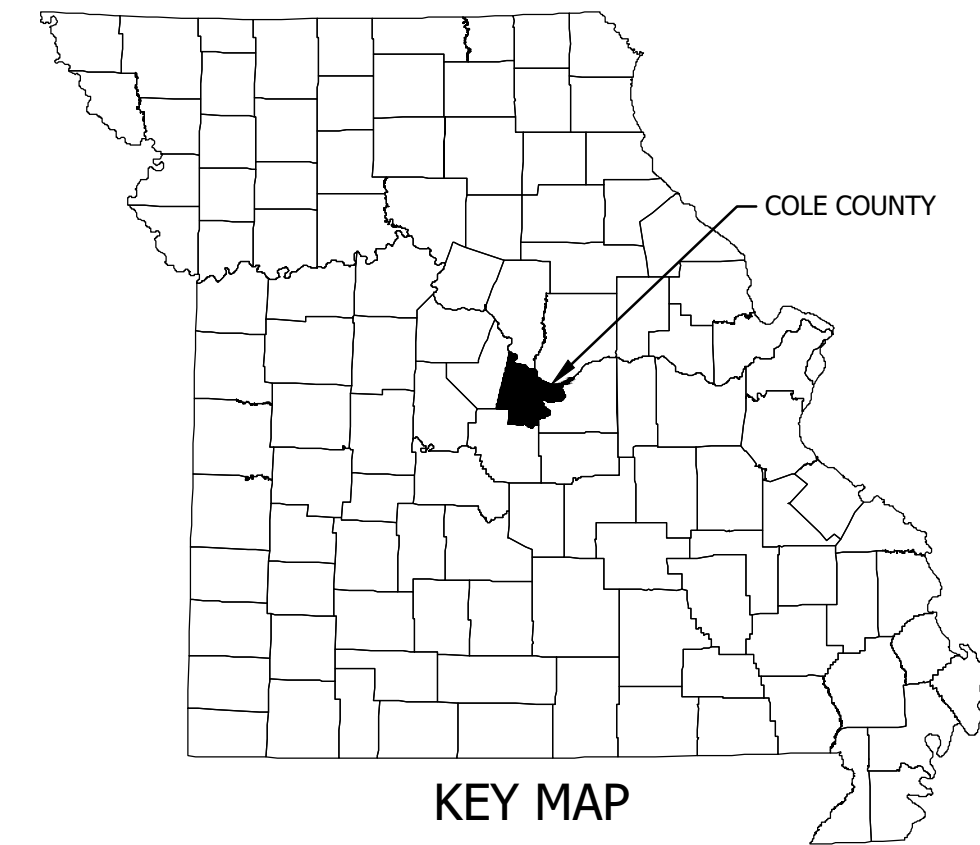


TANNER BRIDGE ROAD - ROAD AND BRIDGE REPLACEMENT

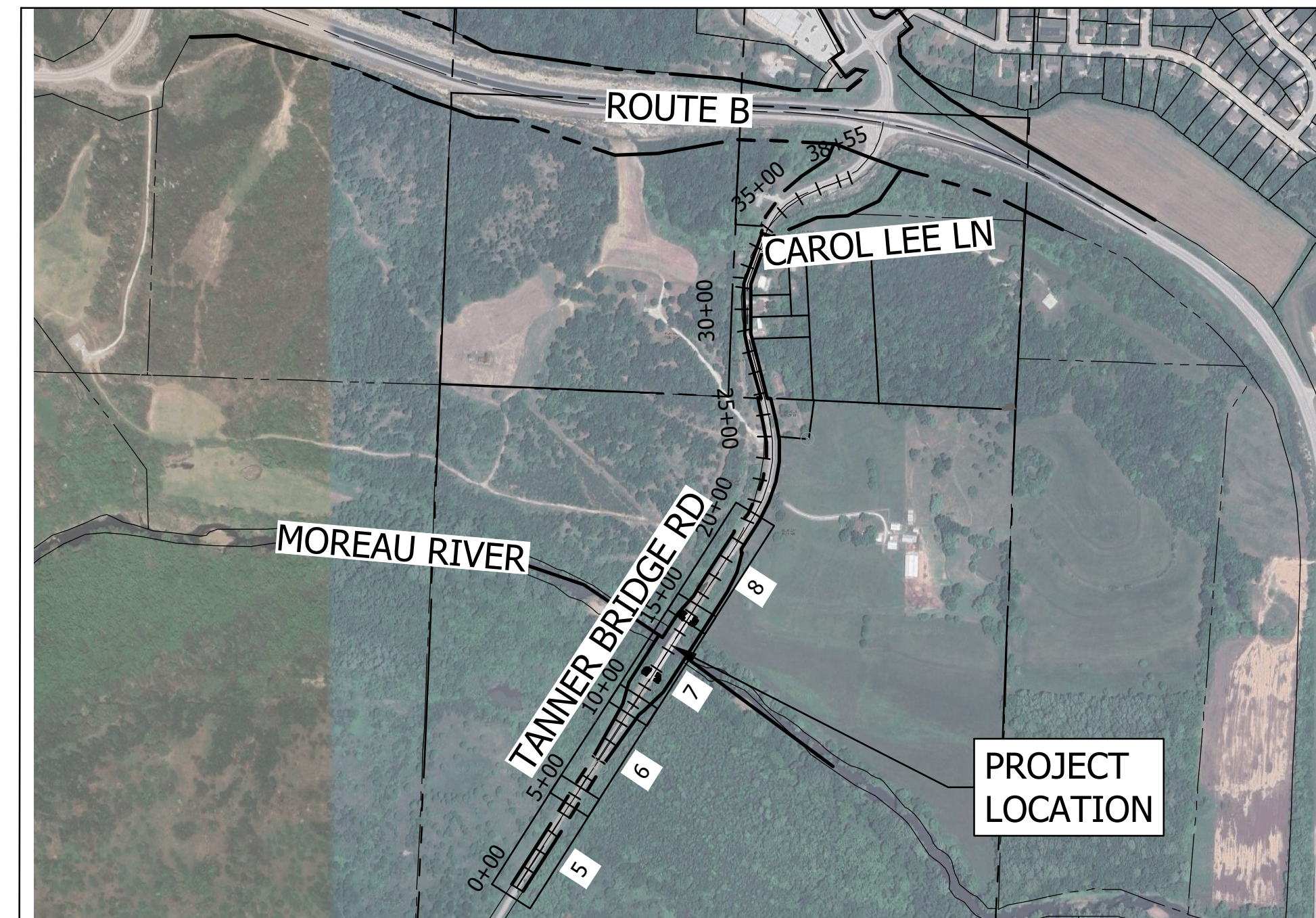
FINAL PLANS

FEDERAL AID PROJECT NO. BRO-R026(025)

AUGUST 2025



KEY MAP



LOCATION MAP

0 600'
SCALE: 1" = 600'

SYMBOL LEGEND	
□	MONUMENT FOUND
●	HORIZONTAL CONTROL POINT
⊙	CALCULATED POINT
⊕	BENCHMARK
+	SIGN
⊙	STOP SIGN
⊙	MAILBOX
⊙	POST
○	MANHOLE LID
⊕	ROOF DRAIN
⊕	BORE HOLE
⊕	LIGHT POLE WITH ARM
⊕	LIGHT POLE
⊕	GUY POLE
⊕	GUYANCHOR
⊕	UTILITY POLE
⊕	ELECTRIC PEDESTAL
⊕	ELECTRIC MANHOLE
⊕	ELECTRIC METER
⊕	DECIDUOUS TREE
⊕	EVERGREEN TREE
⊕	TREE STUMP
⊕	SHRUB
⊕	EVERGREEN SHRUB
⊕	WATER METER
⊕	WATER VALVE
⊕	FIRE HYDRANT
⊕	WATERSPRINKER
⊕	WATER HYDRANT
⊕	TRAFFIC SIGNAL BOX
⊕	TRAFFIC MANHOLE
⊕	TRAFFIC SIGNAL
⊕	GAS VALVE
⊕	GAS METER
⊕	GAS TEST STATION
⊕	TELEPHONE PEDESTAL
⊕	HANDHOLE
⊕	SANITARY MANHOLE
⊕	SANITARY CLEAN OUT
⊕	TELEVISION (CABLE) PEDESTAL
⊕	AREA INLET
⊕	STORM MANHOLE
⊕	STORM SEWER CURB INLET
⊕	VENT PIPE
⊕	TREE REMOVAL

LINE TYPE LEGEND	
---	LOT LINES / RIGHT-OF-WAY
---	EASEMENT LINE
---	SECTION LINE
---	CENTER LINE OF ROAD
---	CURB & GUTTER
SAN	SANITARY SEWER
M	SANITARY SEWER FORCE MAIN
UGCT	STORM SEWER SYSTEM
UGE	UNDER GROUND CABLE TV
OHE	UNDER GROUND ELECTRIC
OHE	OVERHEAD ELECTRIC
UGT	UNDER GROUND TELEPHONE
FO	FIBER OPTICS
W	WATER LINE
G	GAS LINE
□	WOODEN FENCE
□	CHAINLINK FENCE
X	BARBED WIRE FENCE
---	RETAINING WALL
900	CONTOUR MAJOR
901	CONTOUR MINOR
---	LANDSCAPE EDGE
---	TREE DRIP LINE
900	PROP CONTOUR MAJOR
901	PROP CONTOUR MINOR
---	CONSTRUCTION LIMITS
---	NEW DITCH FLOW
---	EDGE OF LANE
---	EDGE OF PAVEMENT

SURFACING LEGEND		
□	CONCRETE PAVEMENT	□ RIP RAP
□	ASPHALT PAVEMENT	□ GRAVEL SURFACE
□		□ SEEDING AREA
□		□ PAVEMENT REMOVAL

ABBREVIATIONS

D/E	DRAINAGE EASEMENT
U/E	UTILITY EASEMENT
L/E	LANDSCAPE EASEMENT
R/W	RIGHT-OF-WAY
P/E	PEDESTRIAN EASEMENT
T/E	TEMPORARY CONSTRUCTION EASEMENT
W/E	WATERLINE EASEMENT
S/E	SANITARY SEWER EASEMENT
EX	EXISTING
PROP	PROPOSED
RT	ALIGN OFFSET RIGHT SIDE
LT	ALIGN OFFSET LEFT SIDE
FG	FINISHED GRADE ELEVATION
TC	TOP OF CURB ELEVATION
TP	TOP OF PAVEMENT ELEVATION
DIP	DUCTILE IRON PIPE
ME	MATCH EXISTING ELEVATION
TW	TOP OF WALL ELEVATION
BW	BOTTOM OF WALL AT GRADE ELEVATION
EOA	EDGE OF ASPHALT PAVEMENT
W	WATERLINE
UGG	UNDER GROUND GAS
UGT	UNDER GROUND TELEPHONE
DND	DO NOT DISTURB

CALL OR CLICK 3 DAYS BEFORE YOU DIG!
MISSOURI ONE-CALL SYSTEM
1-800-DIG-RITE or 811
www.motcall.com

DESIGN DATA

DESIGN SPEED: 40 MPH
CONSTRUCTION BEGINNING: STA 1+40
ENDING STATION: STA 17+75
PROJECT LENGTH: 1635 LF

UTILITIES CONTACT INFORMATION

1-573-644-9000	THREE RIVERS ELECTRIC	TED NEUNER	tneuner@threeriverselectric.com
1-573-681-7504	AMEREN MISSOURI UE (GAS)	JAKE MARTIN	martin7@ameren.com
1-573-635-7011	COLE COUNTY PWSD 2	JAMIE WINELAND	pwsd2@socket.net
1-573-634-6410	CITY OF JEFFERSON WASTEWATER UTILITIES	ERIC SEAMAN	eseaman@jeffersoncitymo.gov

SHEET INDEX:

SHEET NO.	DESCRIPTION
1	TITLE SHEET
2	GENERAL NOTES & QUANTITIES
3	SURVEY CONTROL
4	TYPICAL SECTION
5-8	TANNER BRIDGE ROAD PLAN & PROFILE
9	DRIVEWAY PROFILE
10-11	EROSION CONTROL PLAN
12-13	TRAFFIC CONTROL PLAN
14-19	ROAD CROSS SECTIONS
20	SECTION VOLUME TABLE
1-22	BRIDGE PLANS

APPROVED BY:
COLE COUNTY, MISSOURI
Eric Landwehr
COLE COUNTY PUBLIC WORKS:
ERIC LANDWEHR, P.E., PUBLIC WORKS DIRECTOR
8/13/2025
DATE:

Bartlett & West
601 MONROE ST., SUITE 201 - JEFFERSON CITY, MO 65101
PHONE 573.634.3181 FAX 573.634.7904
CERTIFICATE OF AUTHORITY NO. 000016 AN ENGINEERING PROFESSIONAL FIRM

COVER SHEET
TANNER BRIDGE ROAD - ROAD AND BRIDGE REPLACEMENT
BRO-R026(025)
COLE COUNTY, MISSOURI

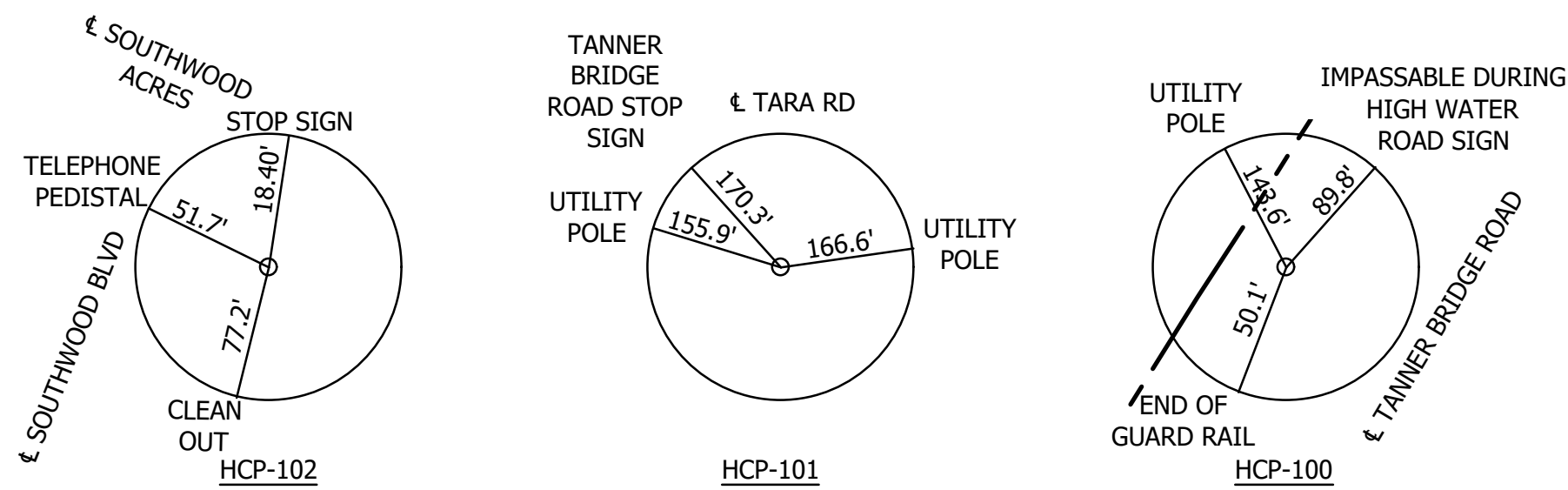
SEALED DATE:	8/13/2025
DESIGNED BY:	JDM
DRAWN BY:	JDM
APPROVED BY:	AKJ
DESIGN PROJ:	15937.410
DATE:	AUGUST 2025
SHEET NO:	1 of 20

Last edit on: 8/13/2025 2:35 AM by: JDM0688
Drawing Name: C:\Users\jdm0688\Documents\Bartlett & West\15937.410 - Tanner Bridge - Cole Co Mo\Project Files\AutoCAD\Plan Set\15937.410 - GENERAL.dwg
Layout Name: TITLE SHEET
Plotted on: 8/22/2025 9:29:53 AM

ALL RIGHTS RESERVED. ALL BARTLETT & WEST PLANS, SPECIFICATIONS AND DRAWINGS ARE PROTECTED UNDER COPYRIGHT LAW, AND NO PART MAY BE COPIED, REPRODUCED, DISPLAYED PUBLICLY, USED TO CREATE DERIVATIVES, DISTRIBUTED, STORED IN A RETRIEVAL SYSTEM OR TRANSMITTED IN ANY FORM BY ANY MEANS WITHOUT PRIOR WRITTEN PERMISSION OF BARTLETT & WEST.

TANNER BRIDGE ROAD								
NUMBER	LENGTH	RADIUS	LINE / CHORD DIRECTION	START STATION	START SEGMENT	END STATION	END SEGMENT	CENTER POINT OF CURVE
L1	1834.55'		N32°33'20.61"E	0+00.00	N 980,613.59635, E 1,727,912.19917	18+34.55	N 982,159.88328, E 1,728,899.40818	
C1	828.30'	1000.00'	N8°49'36.76"E	18+34.55	N 982,159.88328, E 1,728,899.40818	26+62.85	N 982,955.17201, E 1,729,022.90743	N 982,698.00501, E 1,728,056.53641
L2	206.85'		N14°54'07.09"W	26+62.85	N 982,955.17201, E 1,729,022.90743	28+69.70	N 983,155.06260, E 1,728,969.71330	
C2	857.04'	580.00'	N27°25'46.99"E	28+69.70	N 983,155.06260, E 1,728,969.71330	37+26.74	N 983,848.40982, E 1,729,329.56678	N 983,304.21888, E 1,729,530.20631
L3	128.43'		N69°45'41.07"E	37+26.74	N 983,848.40982, E 1,729,329.56678	38+55.17	N 983,892.83869, E 1,729,450.07041	

ALIGNMENT DATA TABLE
NOT TO SCALE



CONTROL POINT REFERENCES
NOT TO SCALE



GENERAL PROJECT INFORMATION

PROJECT: MISSOURI STATE PLANE COORDINATES, CENTRAL ZONE, US FOOT
 SCALE FACTOR: 0.9999164/1.0000836
 HORIZONTAL DATUM: NAD 83
 VERTICAL DATUM: NAVD 88

BENCHMARKS

BM-300 "+ " CUT ON NW SIDE OF CONC ABUTMENT AT NORTH END OF TANNER BRIDGE
 N=981,858.2495
 E=1,728,691.516
 ELEV=581.409
 BM-301 "+ " CUT ON SE SIDE OF CONC ABUTMENT AT SOUTH END OF TANNER BRIDGE
 N=981586.4318
 E=1728547.114
 ELEV=581.344

PROJECT CONTROL

HCP-100 5/8" IRON ROD WITH CAP FOUND ON WEST SIDE OF TANNER BRIDGE ROAD ON NORTH SIDE OF FIELD ENTRANCE 188' NORTH OF THE NORTH ABUTMENT OF TANNER BRIDGE
 N=982,025.9583
 E=1,728,778.4630
 ELEV=577.807
 HCP-101 5/8" IRON ROD WITH CAP FOUND ON SOUTH SIDE OF TARA ROAD 216' EAST OF THE INTERSECTION OF TANNER BRIDGE ROAD & TARA ROAD
 N=980,118.2534
 E=1,727,827.5340
 ELEV=641.515
 HCP-102 5/8" IRON ROD WITH CAP FOUND ON SE QUADRANT OF INTERSECTION OF SOUTHWOOD ACRES DR & SOUTHWOOD TERRACE
 N=980,527.2828
 E=1,723,201.1773
 ELEV=687.753

NOTE: COORDINATES LISTED ARE MODIFIED COORDINATES.

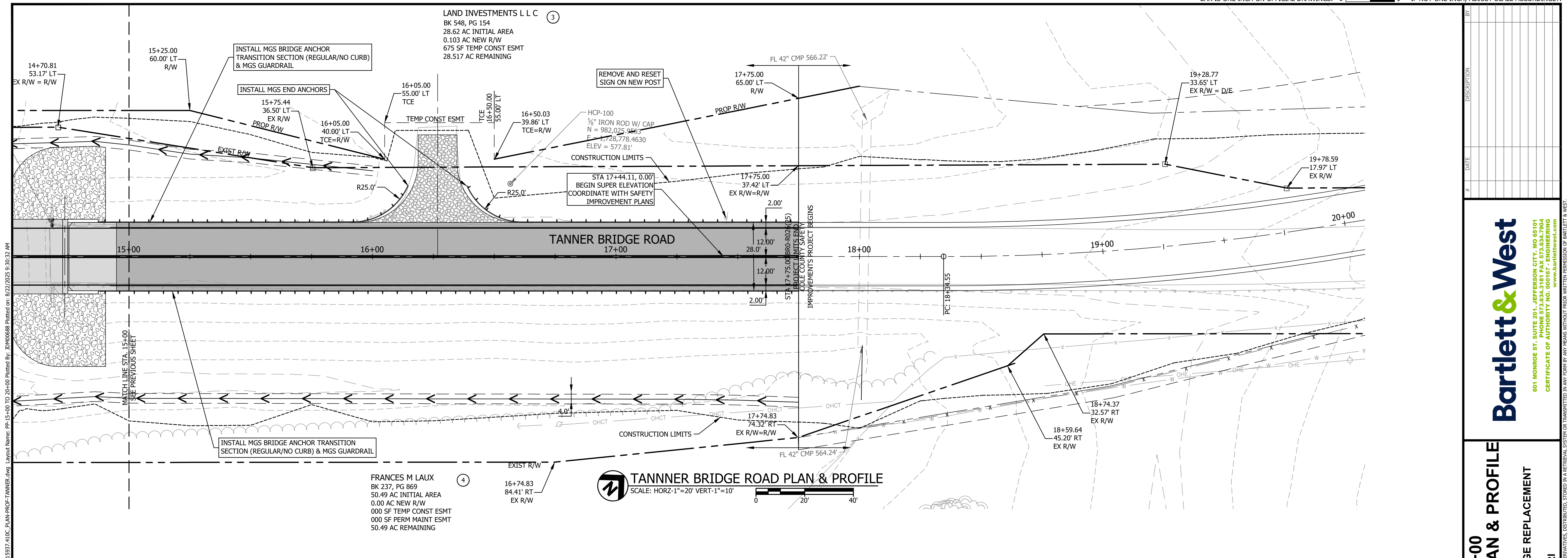
Bartlett & West
 601 MONROE ST., SUITE 201 - JEFFERSON CITY, MO 65101
 PHONE 572.634.3181 FAX 572.634.7904
 CERTIFICATE OF AUTHORITY NO. 0000196 ENGINEERING
 0000196 SURVEYING

BENCHMARKS & HORIZONTAL CONTROL WITH CONTROL POINT TIES & ALIGNMENT TABLE
 TANNER BRIDGE ROAD - ROAD AND BRIDGE REPLACEMENT
 BRO-R026(025)
 COLE COUNTY, MISSOURI

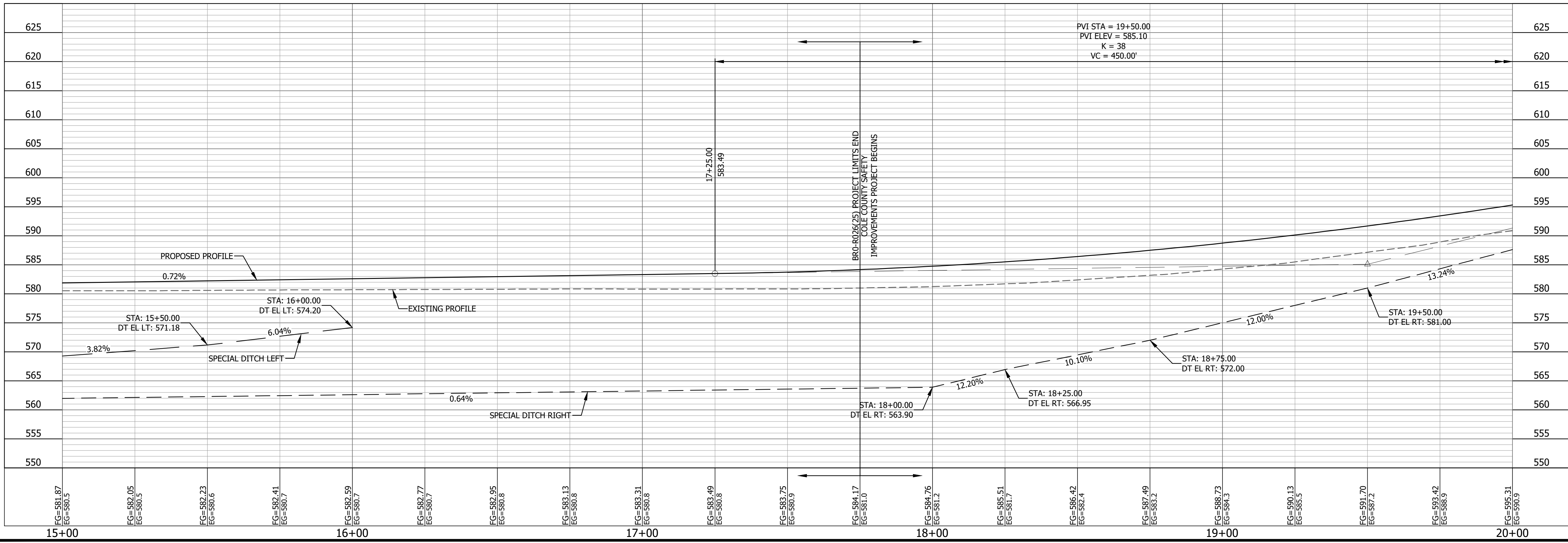
SEALED DATE:	8/13/2025
DESIGNED BY:	JDM
DRAWN BY:	JDM
APPROVED BY:	AKJ
DESIGN PROJ:	15937.410
DATE:	AUGUST 2025
DRAWING NO:	3
SHEET NO:	3 of 20

Drawing Name: C:\Users\jdm08888\OneDrive\Documents\Bartlett & West\15937.410 - Tanner Bridge Cole Co Mo\Project Files\AutoCAD\Plan Set\15937.410 - CNTRL SURVEY.dwg Layout Name: CNTRL_SURV Plotted By: JDM08888 Plotted on: 8/22/2025 9:30:08 AM
 Last edit on: 7/18/2025 12:19 PM by: JDM08888

ALL RIGHTS RESERVED. ALL BENCHMARKS AND DRAWINGS ARE PROTECTED UNDER COPYRIGHT LAW, AND NO PART MAY BE COPIED, REPRODUCED, DISTRIBUTED, STORED IN A RETRIEVAL SYSTEM OR TRANSMITTED IN ANY FORM BY ANY MEANS WITHOUT PRIOR WRITTEN PERMISSION OF BARTLETT & WEST.



Drawing Name: C:\Users\jdm06888\OneDrive\Documents\Bartlett & West\15937.410 - Tanner Bridge, Cole Co Mo\Project Files\AutoCAD\Plan_Sch\15937.410_C_PLAN-PROF-TANNER.dwg Layout Name: PP-15+00 TO 20+00 Plotted on: 8/22/2025 9:30:32 AM Last edit on: 8/22/2025 9:24 AM by: JDM06888



#	DATE	DESCRIPTION

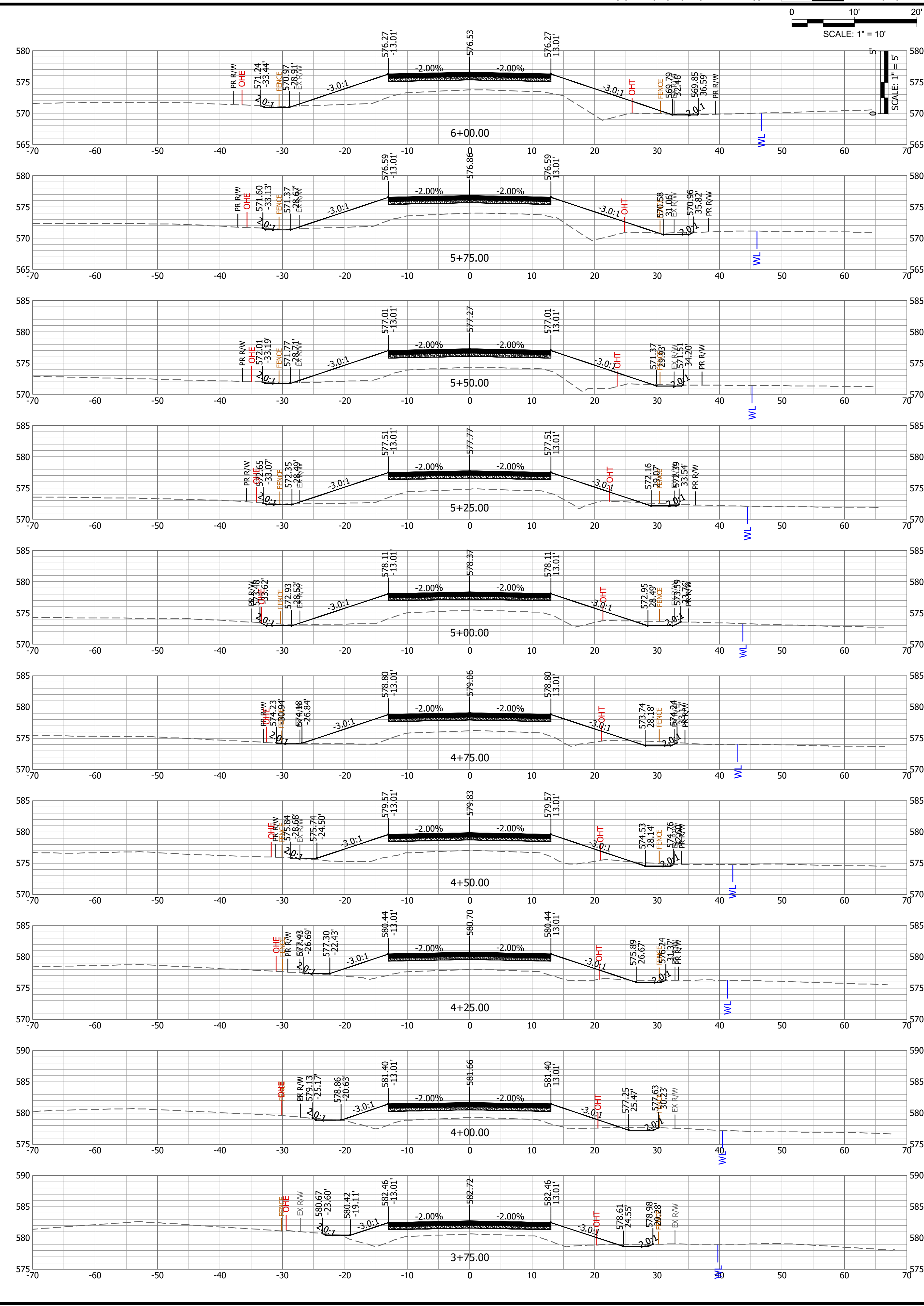
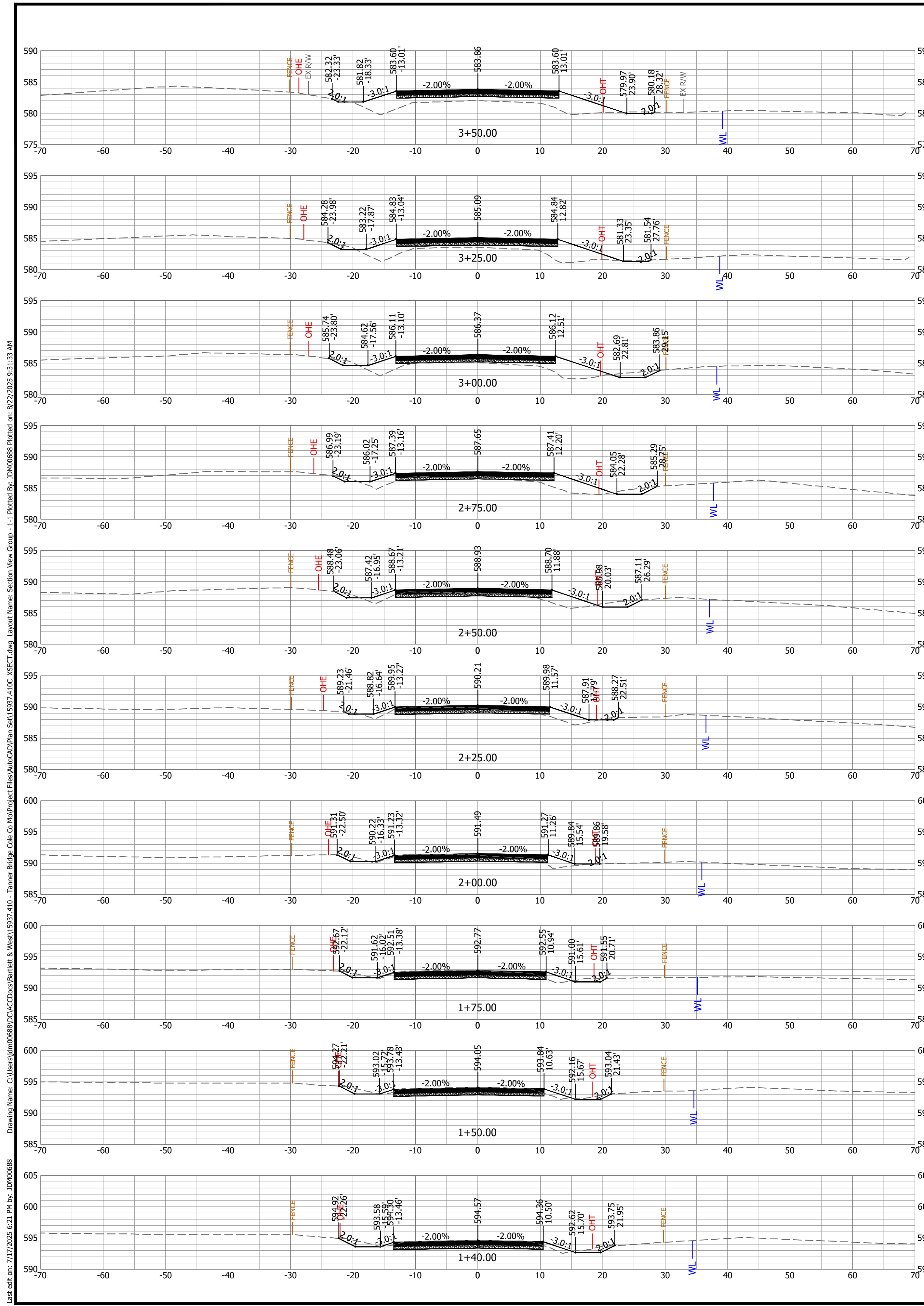
Bartlett & West
 601 MONROE ST., SUITE 201 - JEFFERSON CITY, MO 65101
 PHONE 573.634.3181 FAX 573.634.7904
 CERTIFICATE OF AUTHORITY NO. 00000648 ENGINEERING
 www.bartlettwest.com

**STA 15+00 TO 20+00
 TANNER BRIDGE ROAD PLAN & PROFILE**

**TANNER BRIDGE ROAD - ROAD AND BRIDGE REPLACEMENT
 BRO-R026(025)
 COLE COUNTY, MISSOURI**

SEALED DATE:	8/13/2025
DESIGNED BY:	JDM
DRAWN BY:	JDM
APPROVED BY:	AKJ
DESIGN PROJ:	15937.410
DATE:	AUGUST 2025
DRAWING NO:	8
SHEET NO:	8 of 20

ALL RIGHTS RESERVED. ALL BARTLETT & WEST PLANS, SPECIFICATIONS AND DRAWINGS ARE PROTECTED UNDER COPYRIGHT LAW, AND NO PART MAY BE COPIED, REPRODUCED, DISPLAYED PUBLICLY, USED TO CREATE DERIVATIVES, DISTRIBUTED, STORED IN A RETRIEVAL SYSTEM OR TRANSMITTED IN ANY FORM BY ANY MEANS WITHOUT PRIOR WRITTEN PERMISSION OF BARTLETT & WEST.



Last edit on: 7/17/2025 6:21 PM by: JDM06888
 Drawing Name: C:\Users\jdm06888\OneDrive\Documents\Bartlett & West\15937.410 - Tanner Bridge, Cole Co Mo\Project Files\AutoCAD\Plan_Sch\15937.410_CROSSCT.dwg Layout Name: Section View Group - 1-1 Plotted By: JDM06888 Plotted on: 8/22/2025 9:31:33 AM

DESCRIPTION	
DATE	
#	

Bartlett & West

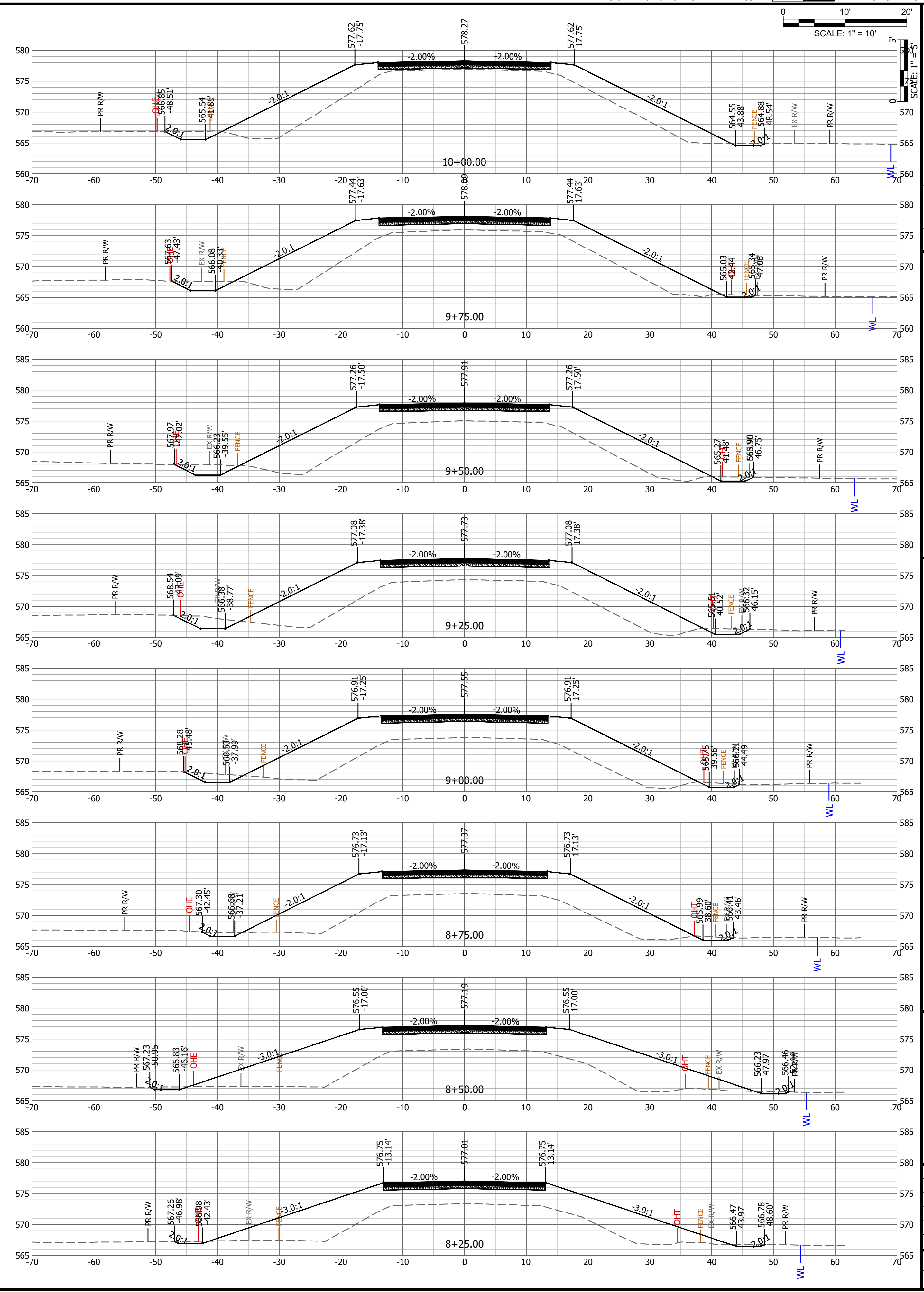
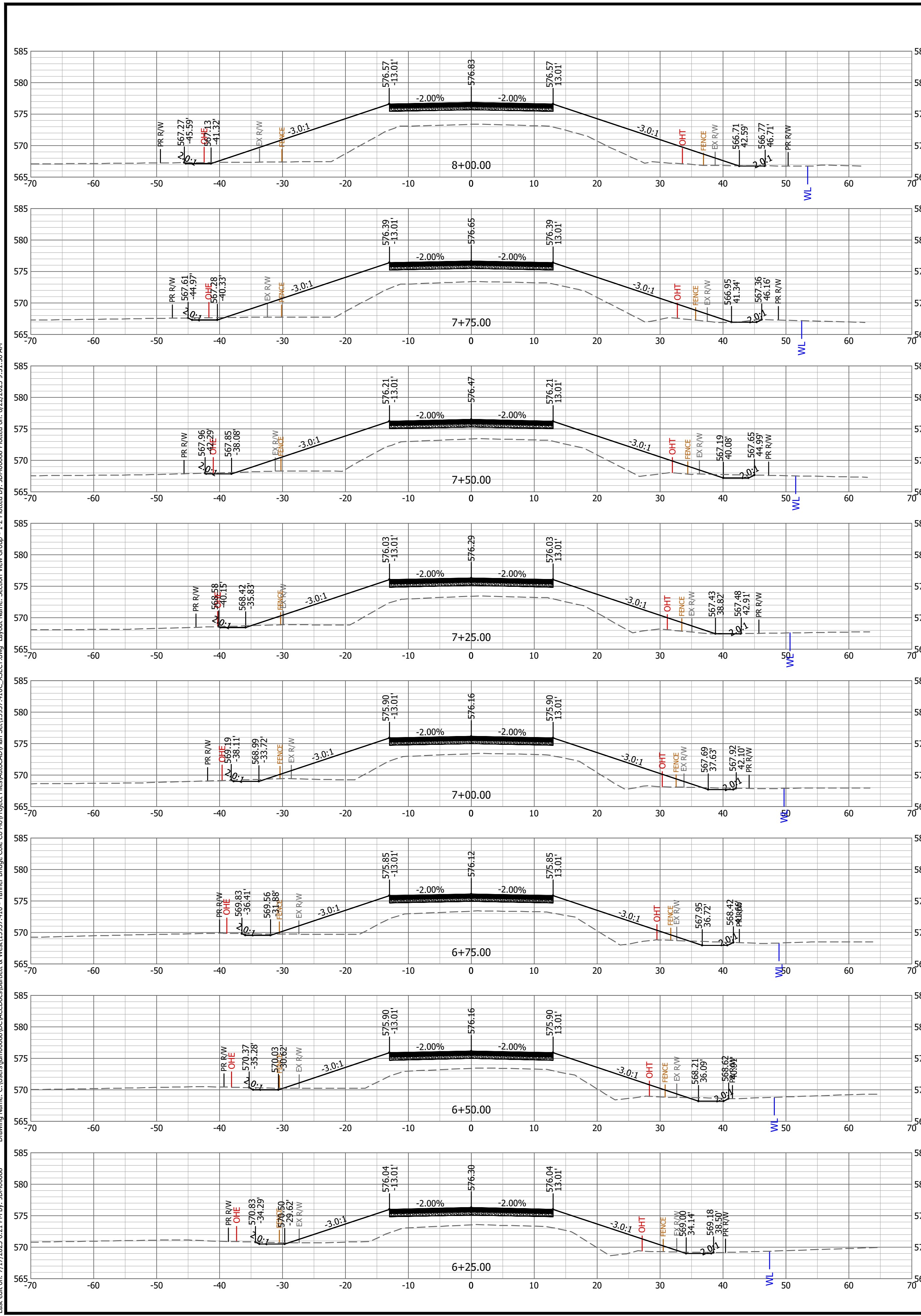
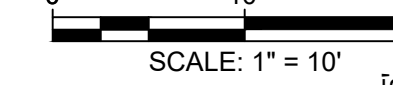
601 MONROE ST., SUITE 201 - JEFFERSON CITY, MO 65101
 PHONE 572.634.3181 FAX 573.634.7904
 CERTIFICATE OF AUTHORITY NO. 000167 - ENGINEERING
 (Professional Seal)

STA 1+40 TO 6+00 CROSS SECTIONS

TANNER BRIDGE ROAD - ROAD AND BRIDGE REPLACEMENT
 BRO-R026(025)
 COLE COUNTY, MISSOURI

SEALED DATE:	8/13/2025
DESIGNED BY:	JDM
DRAWN BY:	JDM
APPROVED BY:	AJK
DESIGN PROJ.:	15937.410
DATE:	AUGUST 2025
DRAWING NO.:	14
SHEET NO.:	14 of 20

ALL RIGHTS RESERVED. ALL BARTLETT & WEST PLANS, SPECIFICATIONS AND DRAWINGS ARE PROTECTED UNDER COPYRIGHT LAW, AND NO PART MAY BE COPIED, REPRODUCED, DISPLAYED PUBLICLY, USED TO CREATE DERIVATIVES, DISTRIBUTED, STORED IN A RETRIEVAL SYSTEM OR TRANSMITTED IN ANY FORM BY ANY MEANS WITHOUT PRIOR WRITTEN PERMISSION OF BARTLETT & WEST.



Last edit on: 7/17/2025 6:21 PM by: JDM06888

Drawing Name: C:\Users\jdm06888\OneDrive\Documents\Bartlett & West\15937.410 - Tanner Bridge Cole Co Mo\Project Files\AutoCAD\Plan_Sht\15937.410_CROSSCT.dwg Layout Name: Section View Group - 1-2 Plotted By: JDM06888 Plotted on: 8/22/2025 9:31:36 AM

NO.	DATE	DESCRIPTION

Bartlett & West

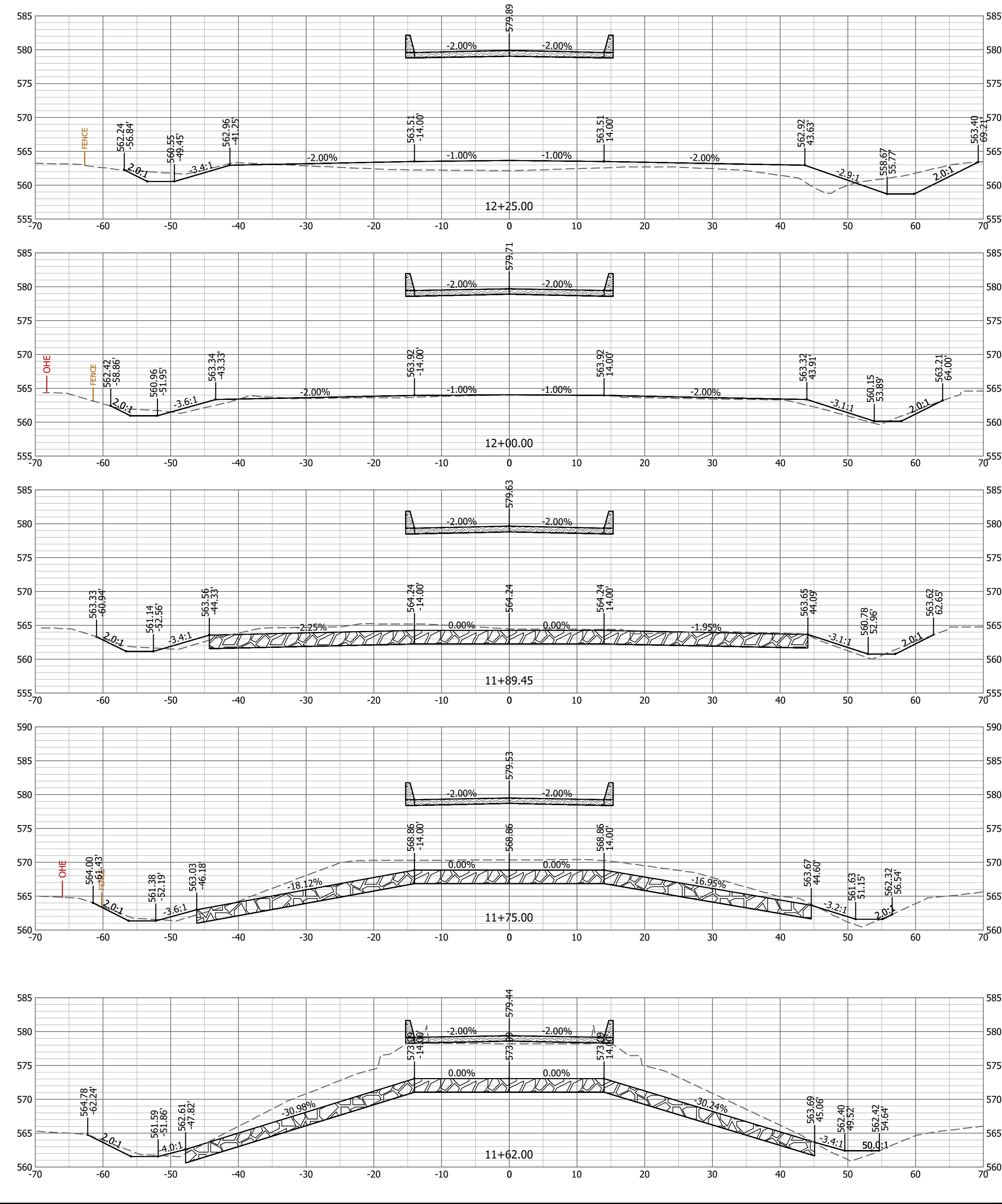
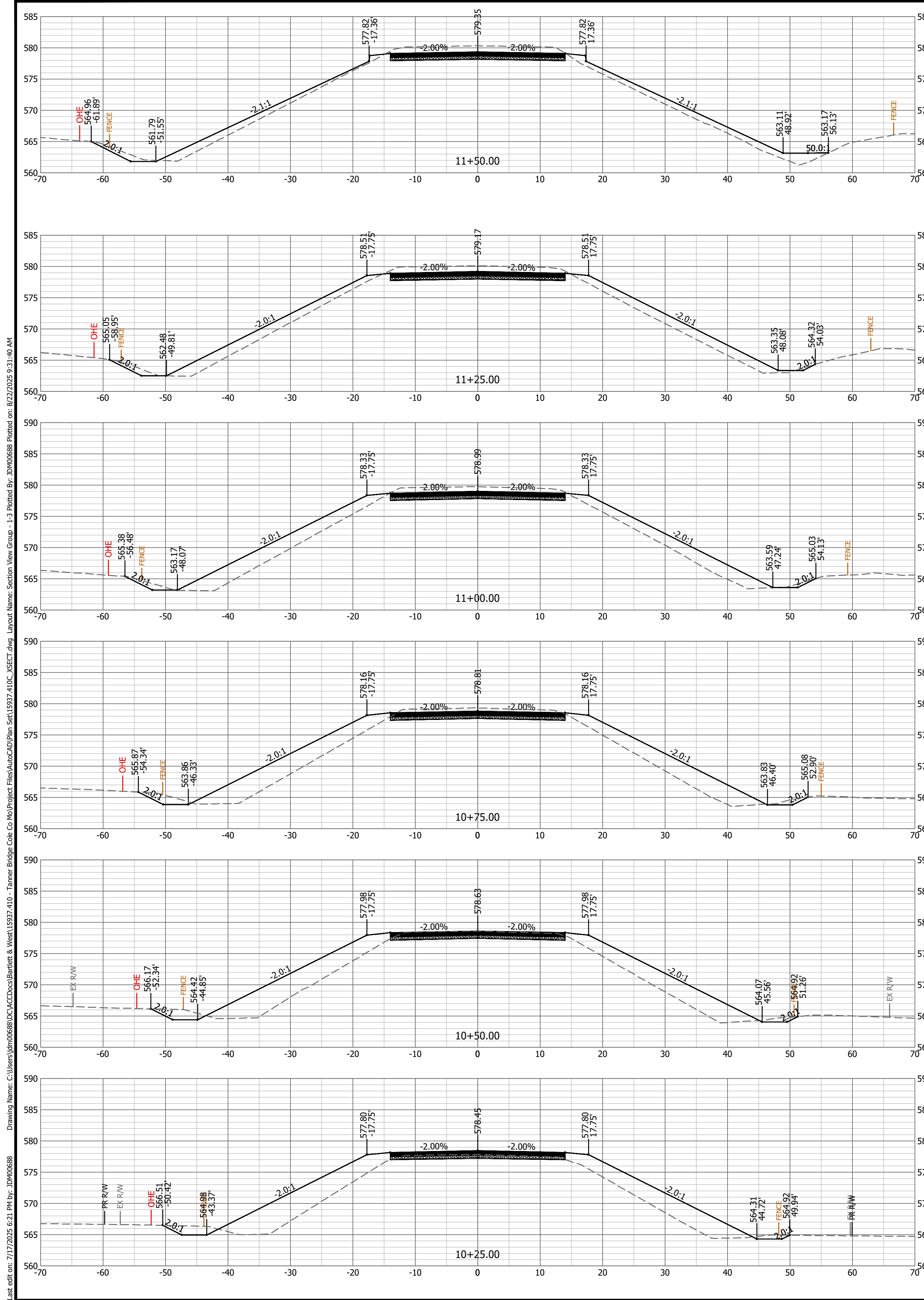
601 MONROE ST., SUITE 201 - JEFFERSON CITY, MO 65101
 PHONE 572.634.3181 FAX 573.634.7904
 CERTIFICATE OF AUTHORITY NO. 000167 - ENGINEERING
 MISSOURI DEPARTMENT OF TRANSPORTATION

**STA 6+25 TO 10+00
CROSS SECTIONS**

**TANNER BRIDGE ROAD - ROAD AND BRIDGE REPLACEMENT
BRO-R026(025)
COLE COUNTY, MISSOURI**

SEALED DATE:	8/13/2025
DESIGNED BY:	JDM
DRAWN BY:	JDM
APPROVED BY:	AKJ
DESIGN PROJ.:	15937.410
DATE:	AUGUST 2025
DRAWING NO.:	15
SHEET NO.:	15 of 20

ALL RIGHTS RESERVED. ALL BARTLETT & WEST PLANS, SPECIFICATIONS AND DRAWINGS ARE PROTECTED UNDER COPYRIGHT LAW, AND NO PART MAY BE COPIED, REPRODUCED, DISPLAYED PUBLICLY, USED TO CREATE DERIVATIVES, DISTRIBUTED, STORED IN A RETRIEVAL SYSTEM OR TRANSMITTED IN ANY FORM BY ANY MEANS WITHOUT PRIOR WRITTEN PERMISSION OF BARTLETT & WEST.



DATE	
#	
Bartlett & West	
601 MONROE ST., SUITE 201 - JEFFERSON CITY, MO 65101 PHONE 572.634.3181 FAX 573.634.7904 CERTIFICATE OF AUTHORITY NO. 000167 - ENGINEERING LICENSE NO. 14450	
STA 10+25 TO 12+25 CROSS SECTIONS	
TANNER BRIDGE ROAD - ROAD AND BRIDGE REPLACEMENT BRO-R026(025) COLE COUNTY, MISSOURI	
SEALED DATE:	8/13/2025
DESIGNED BY:	JDM
DRAWN BY:	JDM
APPROVED BY:	AJG
DESIGN PROJ.:	15937.410
DATE:	AUGUST 2025
DRAWING NO.:	16
SHEET NO.:	16 of 20

Last edit on: 7/17/2025 6:21 PM by: JDM06888
 Drawing Name: C:\Users\jdm06888\Documents\Bartlett & West\15937.410 - Tanner Bridge Cole Co Mo\Project Files\AutoCAD\Plan_Sch\15937.410_CROSS SECT.dwg
 Layout Name: Section View Group - 1,3 Plotted By: JDM06888 Plotted on: 8/22/2025 9:31:40 AM

ALL RIGHTS RESERVED. ALL BARTLETT & WEST PLANS, SPECIFICATIONS AND DRAWINGS ARE PROTECTED UNDER COPYRIGHT LAW, AND NO PART MAY BE COPIED, REPRODUCED, DISPLAYED PUBLICLY, USED TO CREATE DERIVATIVES, DISTRIBUTED, STORED IN A RETRIEVAL SYSTEM OR TRANSMITTED IN ANY FORM BY ANY MEANS WITHOUT PRIOR WRITTEN PERMISSION OF BARTLETT & WEST.

