

PRINTS ISSUED
6/26/17
REVISIONS:

Central Missouri Professional Services, Inc.
ENGINEERING - SURVEYING - MATERIALS TESTING
2500 E. McCARTY
JEFFERSON CITY, MISSOURI 65101
(573) 634-3455
(573) 634-8898

6/26/17
Paul Samson, PE - Engineer
MO# PE-2002016730

STATE OF MISSOURI
PAUL SAMSON
NUMBER
PE-002115740
PROFESSIONAL ENGINEER

**SCHERR DRIVE
STORMWATER PROJECT**
COLE COUNTY PUBLIC WORKS

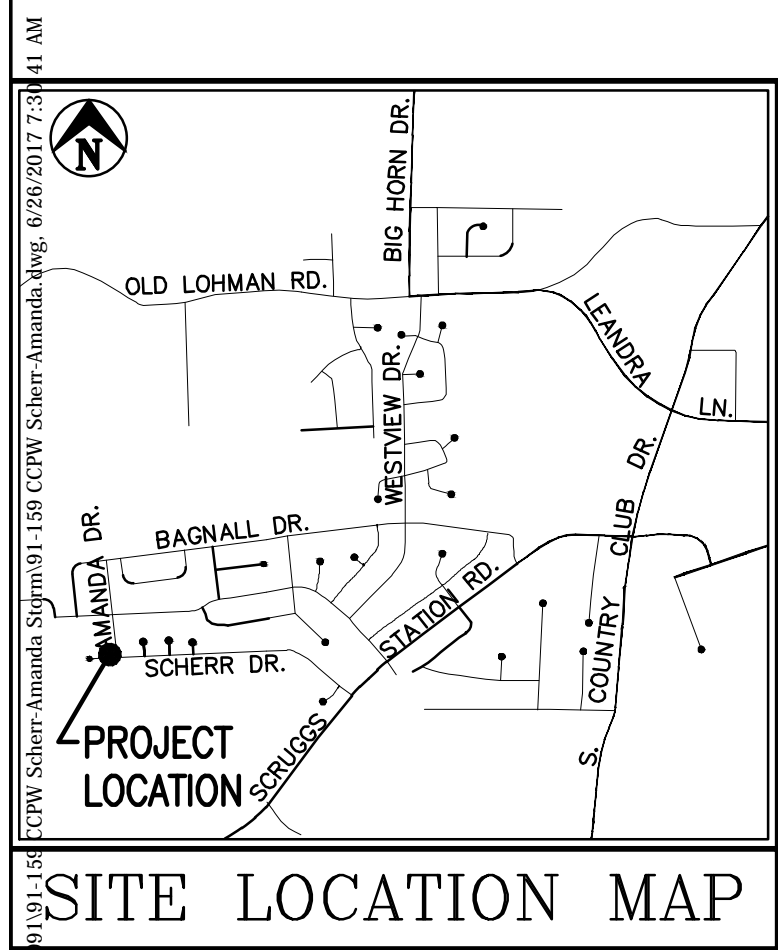
SCHERR DRIVE
JEFFERSON CITY, COLE COUNTY, MISSOURI

CMPS JOB No. 91-159
DRN. BY: P.L.S. CKD. BY: P.L.S.

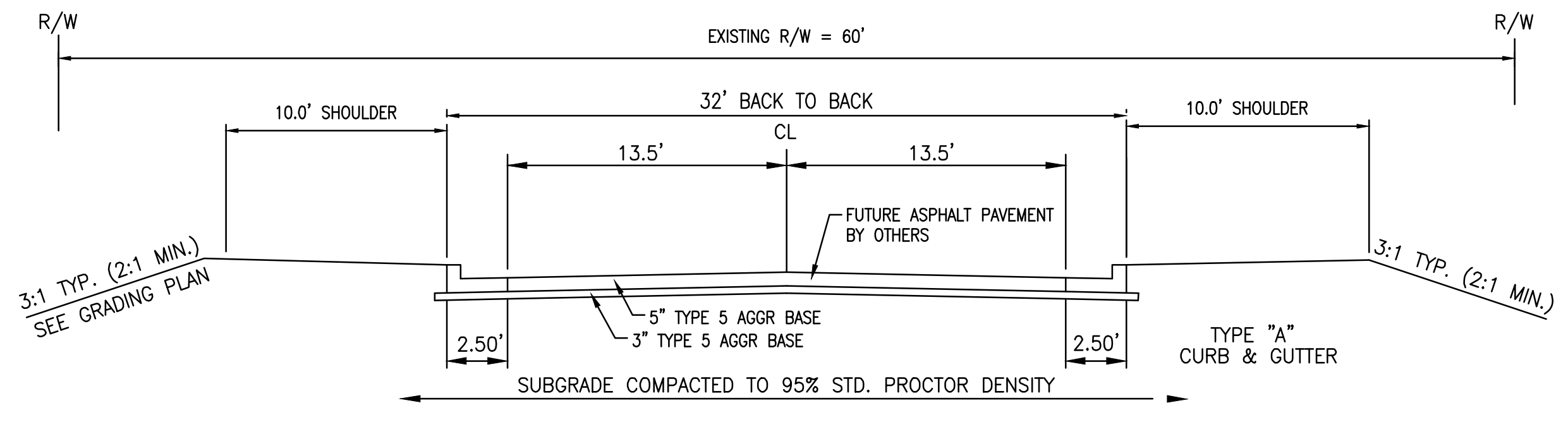
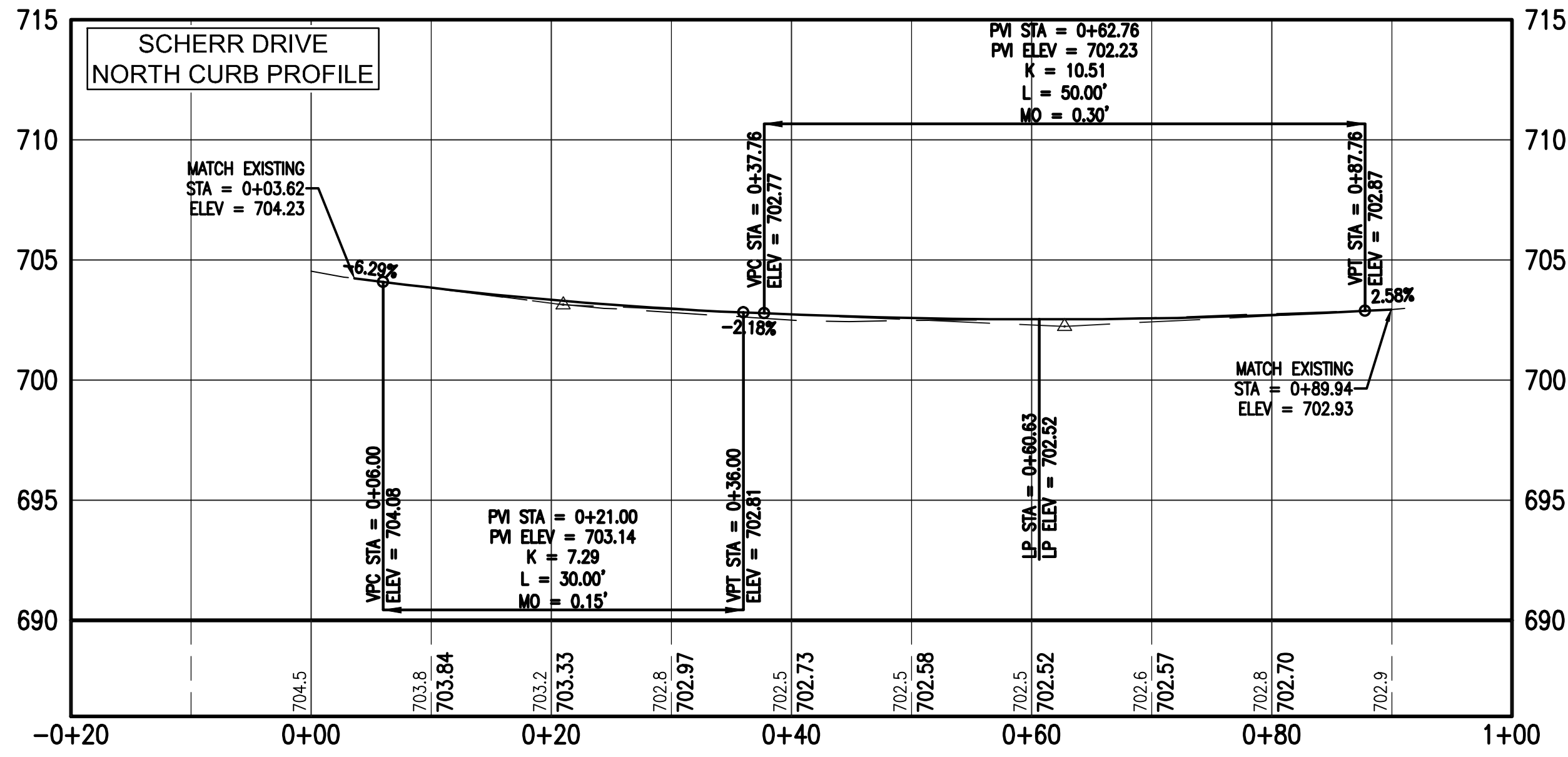
SCALE: 1"=10'

SHEET TITLE
PLAN SHEET

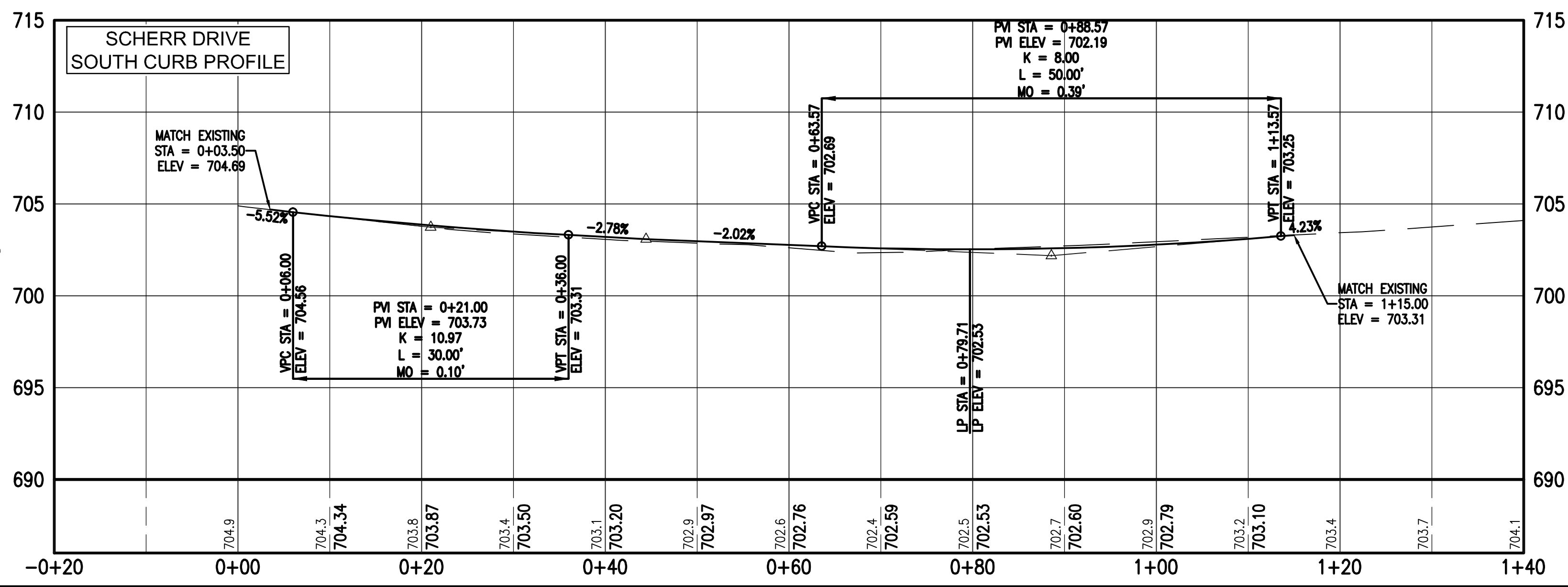
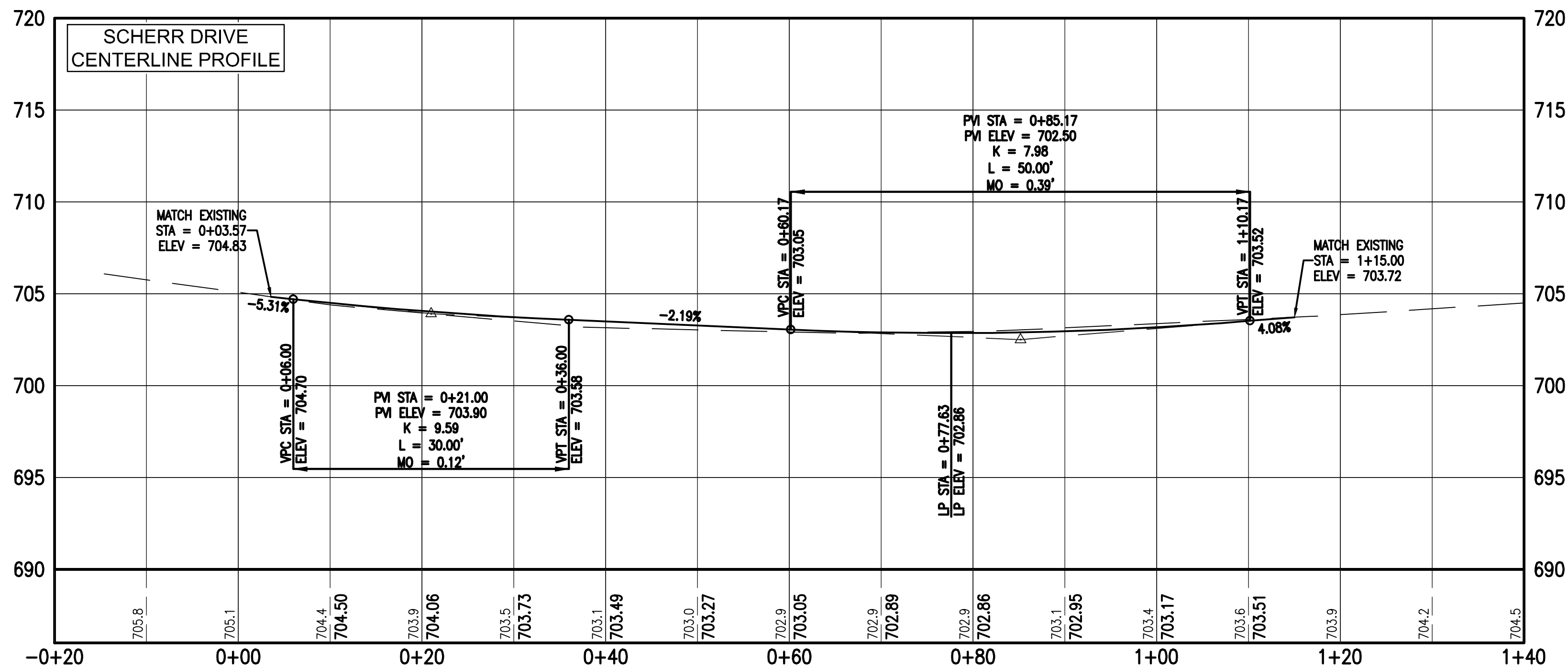
SHEET NUMBER
1
OF 3 SHEETS



- TYPE A CURB & GUTTER - 194.4 LF
- TYPE 5 AGGR. BASE (ASSUME 8" IN STREET & 3" UNDER CURB) - 158.5 TON
- 6" CONC. APPROACH - 8.2 SY
- 6" CONC. DRIVE - 12.0 SY
- 4" PVC PIPE - 50 LF
- SC250 TURF REINF. MAT - 80 SY
- 2' THICK ROCK BLANKET - 17.5 CY
- EXCAVATION - 150 CY
- PLACING FILL - 130 CY
- 87x63 ARCH PIPE (12 GA. POLYMER COATED) (INCLUDES BEND, AND BEVELED END) - 192.38 LF
- 87x63 ARCH PIPE F.E.S. - 1 EA
- 4'x4' TYPE C DROP INLETS - 3 EACH
- 15" CMP (16 GA, POLYMER COATED) (INCLUDES SADDLE) - 55.5 LF
- 15" SPIRAL RIB PIPE (16 GA, POLYMER COATED) - 33.82 LF



TYPICAL PAVEMENT SECTION-32' B-B
SCHERR DRIVE
NOT TO SCALE



PRINTS ISSUED
6/26/17

REVISIONS:

Central Missouri Professional Services, Inc.
ENGINEERING - SURVEYING - MATERIALS TESTING
2500 E. McCARTY
JEFFERSON CITY, MISSOURI 65101
(573) 634-3455
(573) 634-8898

PAUL SAMSON
STATE OF MISSOURI
PROFESSIONAL ENGINEER
NUMBER
PE-00211930
6/26/17
Paul Samson, PE - Engineer
MO# PE-2002016730

SCHERR DRIVE
STORMWATER PROJECT
COLE COUNTY PUBLIC WORKS
SCHERR DRIVE
JEFFERSON CITY, COLE COUNTY, MISSOURI

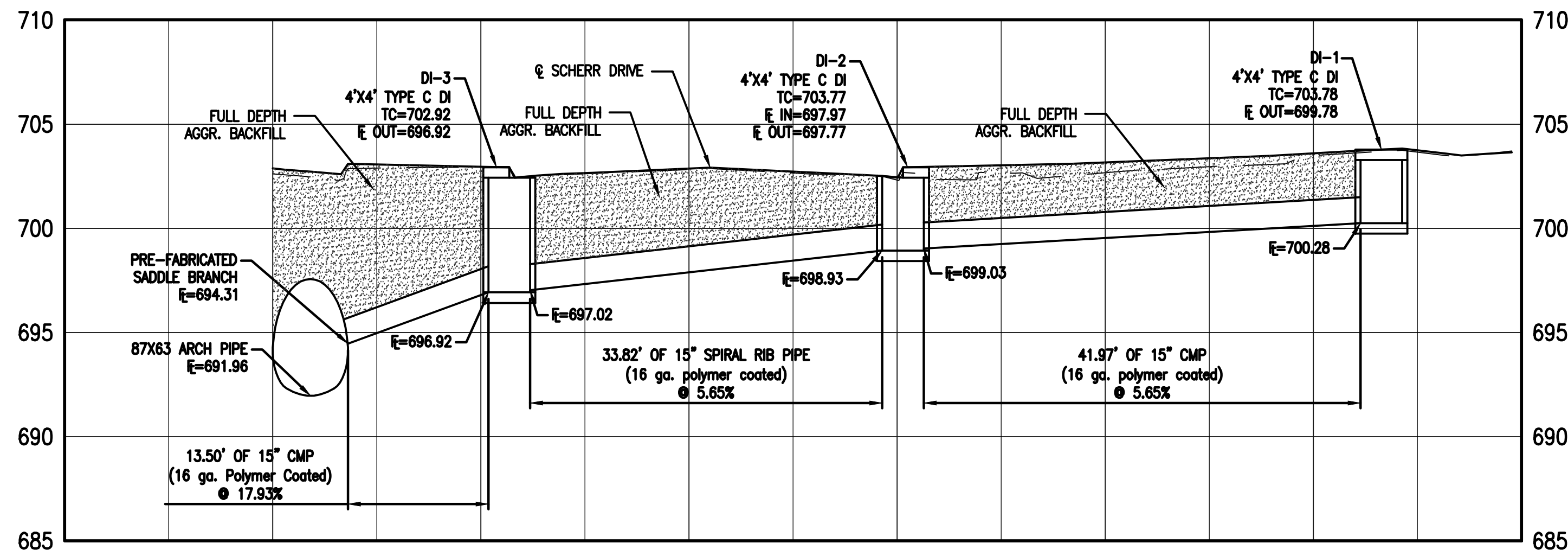
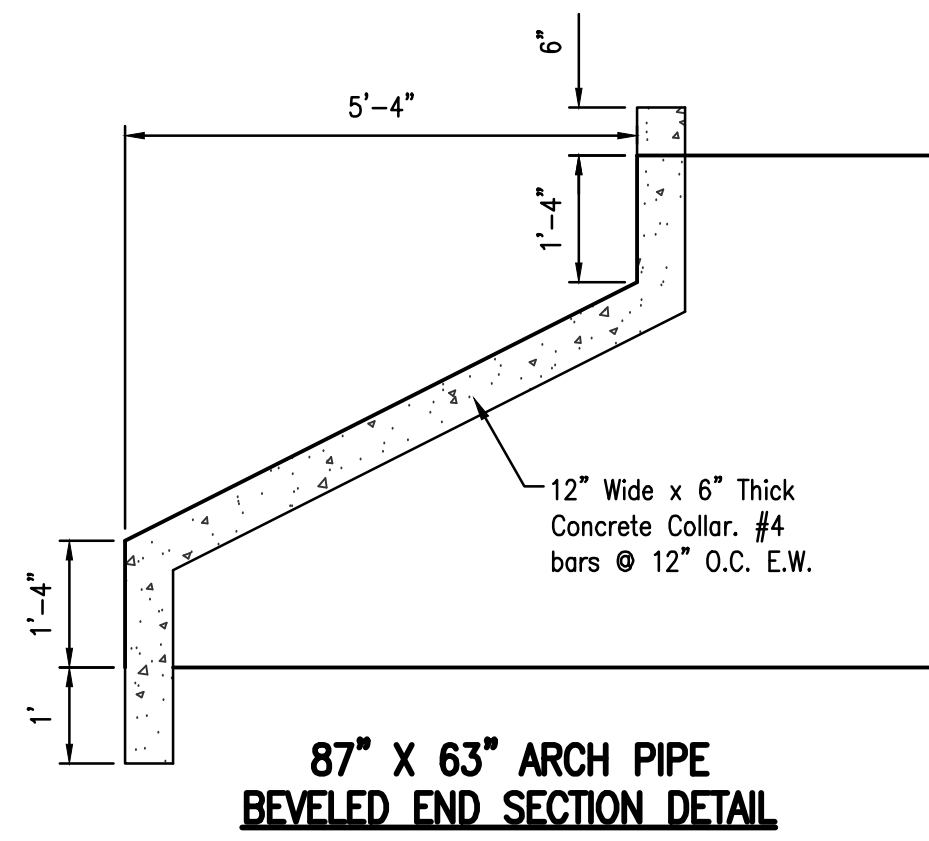
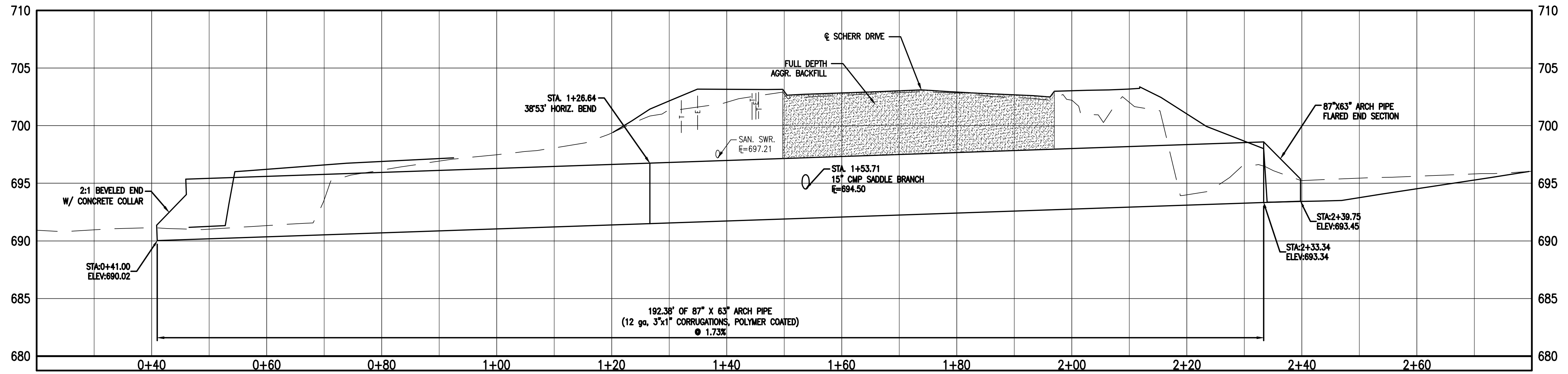
CMPS JOB No. 91-159

DRN. BY: P.L.S. CKD. BY: P.L.S.

SCALE: 1"=10'

SHEET TITLE
STREET PROFILES
SHEET NUMBER
2
OF 3 SHEETS

P:\181191-159 CCRW Scherr-Amanada Storm\01-159 CCRW Scherr-Amanada.dwg, 02/26/2017 7:04:41 AM



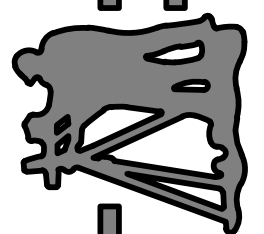
PRINTS ISSUED

6/26/17

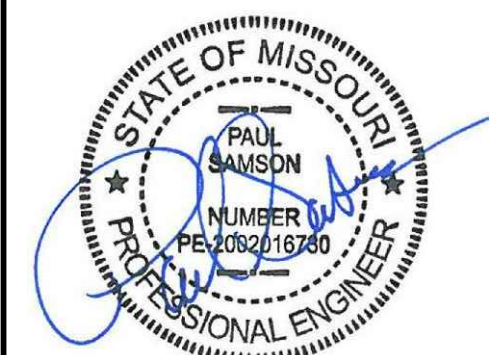
REVISIONS:

Central Missouri Professional Services, Inc.
 ENGINEERING SURVEYING - MATERIALS TESTING
 2500 E. MCCARTY
 JEFFERSON CITY, MISSOURI 65101

(573) 634-3455
 (573) 634-8898



Central Missouri Professional Services, Inc.
 Missouri State Certificate of Authority #001588



6/26/17

Paul Samson, PE - Engineer
 MO# PE-2002016730

**SCHERR DRIVE
 STORMWATER PROJECT
 COLE COUNTY PUBLIC WORKS**

SCHERR DRIVE
 JEFFERSON CITY, COLE COUNTY, MISSOURI

CMPS JOB No. 91-159

DRN. BY: P.L.S. CKD. BY: P.L.S.

SCALE: 1"=10'

SHEET TITLE

**STORM
 PROFILES**

SHEET NUMBER

3

OF 3 SHEETS