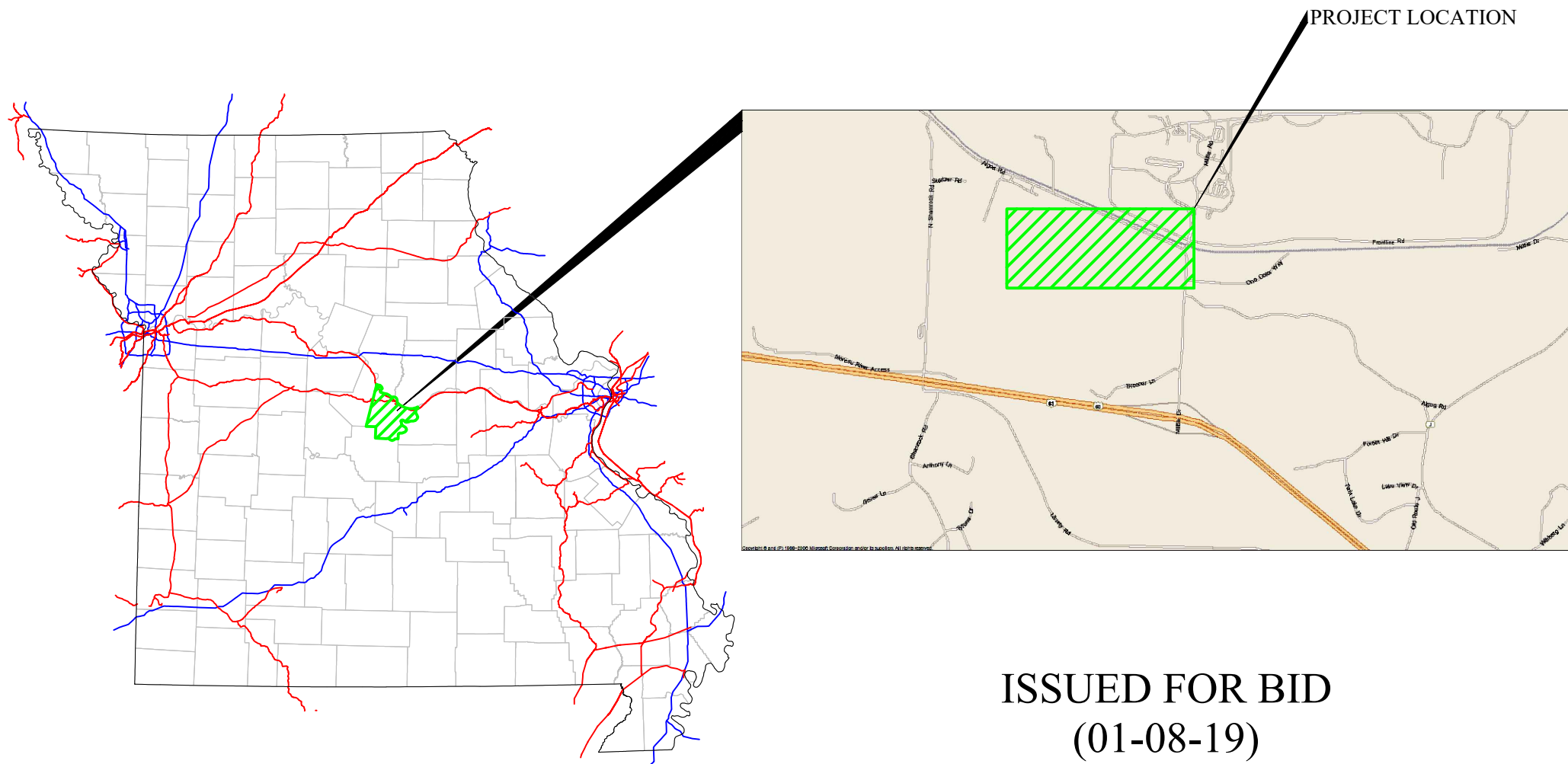


# PROPOSED TRACKAGE TO SERVE ALPLA & MORRIS PACKAGING IN ALGOA, MISSOURI



## SHEET INDEX

- 1.) COVER SHEET
- 2.) EXISTING PLAN
- 3.) EXISTING PLAN
- 4.) PROPOSED PLAN
- 5.) T/RAIL PROFILES & GENERAL NOTES
- 6.) ADDITIONAL T/RAIL PROFILES
- 7.) DETAILS
- 8.) PIPE PROTECTION DETAILS
- 9.) CROSS SECTIONS STA 32+10 - STA 36+00
- 10.) CROSS SECTIONS STA 37+00 - STA 40+09.23
- 11.) CROSS SECTIONS STA 40+67.09 - STA 45+78.23
- 12.) EARTHWORK QUANTITIES

ISSUED FOR BID  
(01-08-19)

State of Missouri

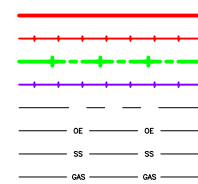
REVISION #	BY	DATE	DESCRIPTION	CONST. PLANS

FES #36881

Central Missouri Professional Services, Inc.  
ENGINEERING - SURVEYING - MATERIALS TESTING  
2500 E. McCARTY (573) 634-3455  
JEFFERSON CITY, MISSOURI 65101 (573) 634-8898

COVER SHEET

**COLOR LEGEND:**  
 EXIST UPRR OWNED TRACKAGE  
 EXIST INDUSTRY OWNED TRACKAGE  
 PRO INDUSTRY OWNED TRACKAGE  
 FUTURE INDUSTRY OWNED TRACKAGE  
 EXIST ROW LINE  
 EXIST OVERHEAD WIRE  
 EXIST SANITARY SEWER LINE  
 EXIST UTILITY GAS LINE



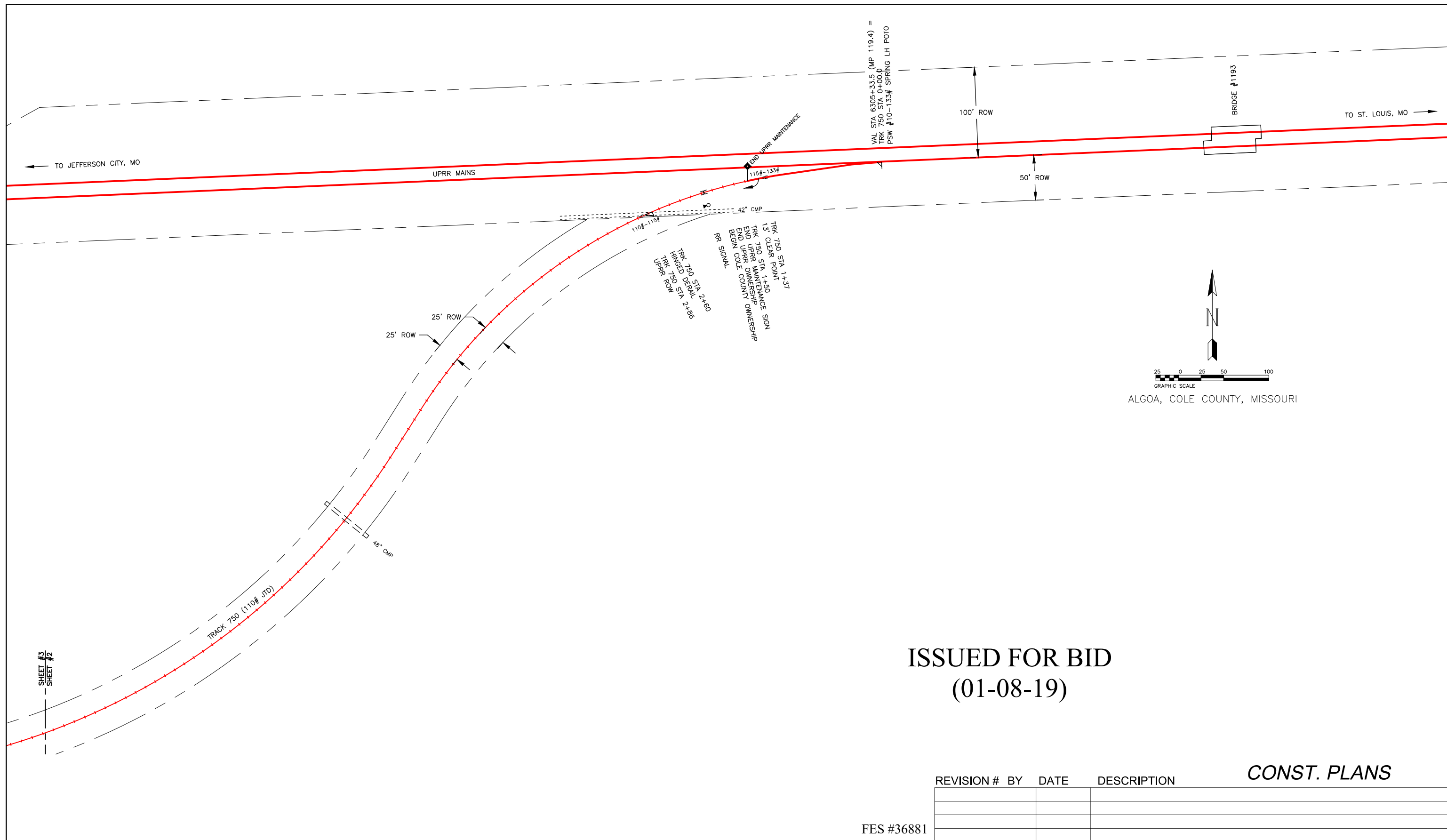
Drawn By: KMS  
 Checked By: RSS  
 Date: 01-08-19  
 Job Number: 16065-1  
 Sheet Number: 1

For Use In Agreement With: UPRR  
 And ALPLA & COLE COUNTY  
 MILE POST 119.4, SEDALIA SUBDIVISION  
 ALGOA, COLE COUNTY, MISSOURI  
 TRACKAGE TO SERVE: ALPLA & MORRIS PKG

**DESIGN NINE**  
ENGINEERING SERVICES FOR RAILROADS AND INDUSTRY  
11166 TESSON FERRY ROAD  
SUITE 100  
ST. LOUIS MO, 63123-6966  
(314) 729-7600

**FIBER OPTIC CABLE!**  
CALL BEFORE YOU DIG  
1-800-336-9193

S:\2016\CMPS\Cole County Spur\Design\16065-1.dwg, Exist Plan 1, 1/8/2019 10:19:20 AM, kms



ISSUED FOR BID  
(01-08-19)

**CONST. PLANS**

REVISION #	BY	DATE	DESCRIPTION

FES #36881

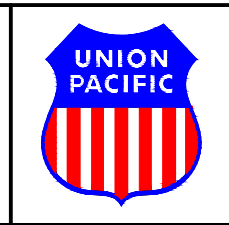
Central Missouri Professional Services, Inc.  
ENGINEERING - SURVEYING - MATERIALS TESTING  
2500 E. McCARTY  
JEFFERSON CITY, MISSOURI 65101  
(573) 634-3455  
(573) 634-8898

**EXISTING PLAN**

**FIBER OPTIC CABLE!** CALL BEFORE YOU DIG 1-800-336-9193

**COLOR LEGEND:**

- EXIST UPRR OWNED TRACKAGE
- EXIST INDUSTRY OWNED TRACKAGE
- PRO INDUSTRY OWNED TRACKAGE
- FUTURE INDUSTRY OWNED TRACKAGE
- EXIST ROW LINE
- EXIST OVERHEAD WIRE
- EXIST SANITARY SEWER LINE
- EXIST UTILITY GAS LINE

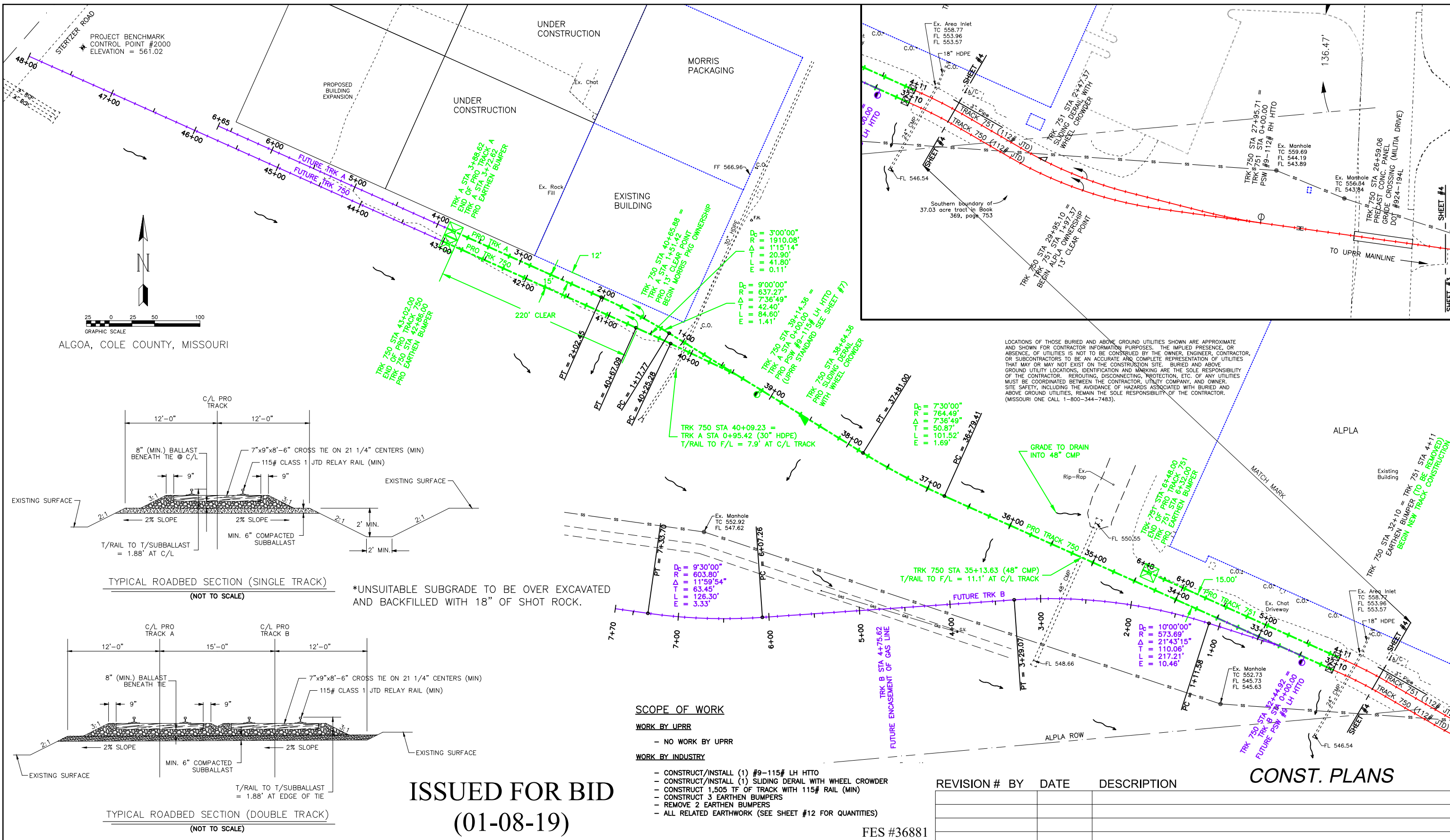


Drawn By:	KMS
Checked By:	RSS
Date:	01-08-19
Job Number :	16065-1
Sheet Number :	2

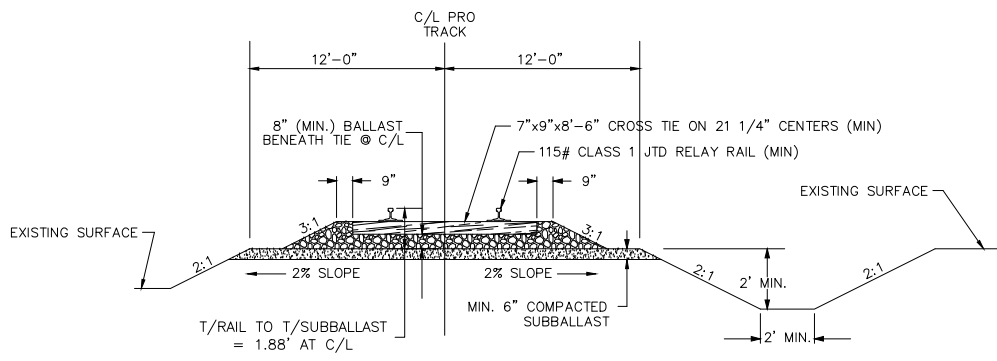
For Use In Agreement With:	UPRR
And	ALPLA & COLE COUNTY
MILE POST 119.4, SEDALIA SUBDIVISION ALGOA, COLE COUNTY, MISSOURI	
TRACKAGE TO SERVE:	ALPLA & MORRIS PKG



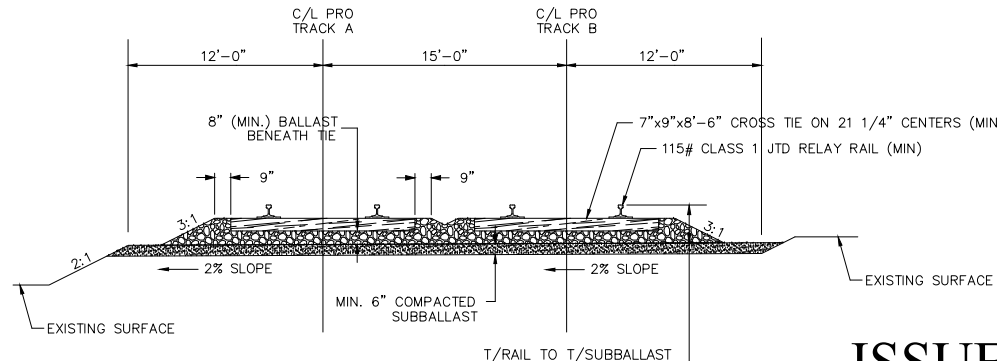
S:\2016\CMPS\Cole County Spur\Design\16065-1.dwg, Pro Plan, 1/8/2019 10:19:31 AM, kms



ALGOA, COLE COUNTY, MISSOURI



\*UNSATURATED SUBGRADE TO BE OVER EXCAVATED AND BACKFILLED WITH 18" OF SHOT ROCK.



**SCOPE OF WORK**

- WORK BY UPRR**
- NO WORK BY UPRR
- WORK BY INDUSTRY**
- CONSTRUCT/INSTALL (1) #9-115# LH HTTO
  - CONSTRUCT/INSTALL (1) SLIDING DERAIL WITH WHEEL CROWDER
  - CONSTRUCT 1,505 TF OF TRACK WITH 115# RAIL (MIN)
  - CONSTRUCT 3 EARTHEN BUMPERS
  - REMOVE 2 EARTHEN BUMPERS
  - ALL RELATED EARTHWORK (SEE SHEET #12 FOR QUANTITIES)

**ISSUED FOR BID**  
**(01-08-19)**

**CONST. PLANS**

REVISION #	BY	DATE	DESCRIPTION

Central Missouri Professional Services, Inc.  
ENGINEERING - SURVEYING - MATERIALS TESTING  
2500 E. McCARTY  
JEFFERSON CITY, MISSOURI 65101  
(573) 634-3455  
(573) 634-8898

**DESIGN NINE**  
ENGINEERING SERVICES FOR RAILROADS AND INDUSTRY

11166 TESSON FERRY ROAD  
SUITE 100  
ST. LOUIS MO, 63123-6966  
(314) 729-7600

**PROPOSED PLAN**

**FIBER OPTIC CABLE!**

CALL BEFORE YOU DIG  
1-800-336-9193

**COLOR LEGEND:**

- EXIST UPRR OWNED TRACKAGE
- EXIST INDUSTRY OWNED TRACKAGE
- PRO INDUSTRY OWNED TRACKAGE
- FUTURE INDUSTRY OWNED TRACKAGE
- EXIST ROW LINE
- EXIST OVERHEAD WIRE
- EXIST SANITARY SEWER LINE
- EXIST UTILITY GAS LINE



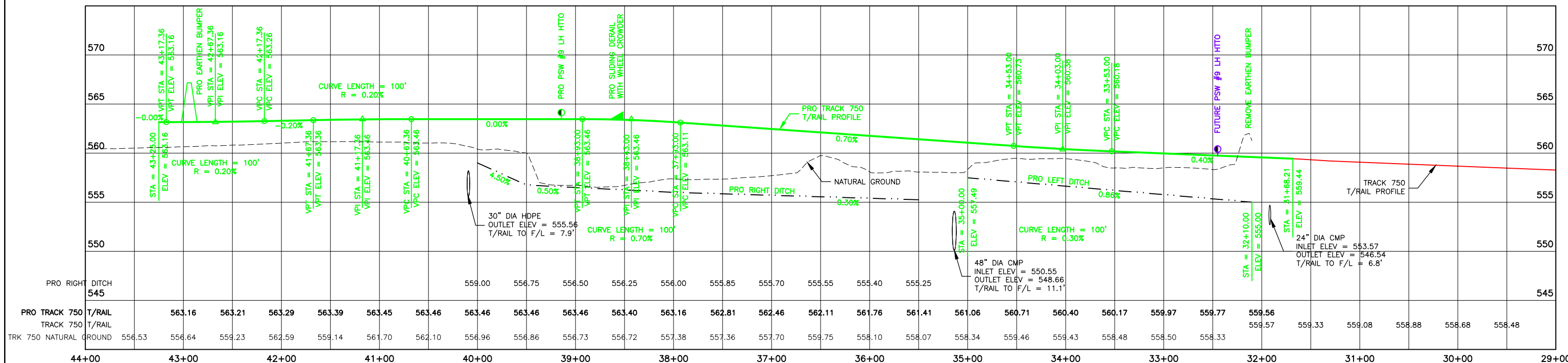
Drawn By: KMS  
Checked By: RSS  
Date: 01-08-19  
Job Number: 16065-1  
Sheet Number: 4

For Use In Agreement With: UPRR  
And ALPLA & COLE COUNTY

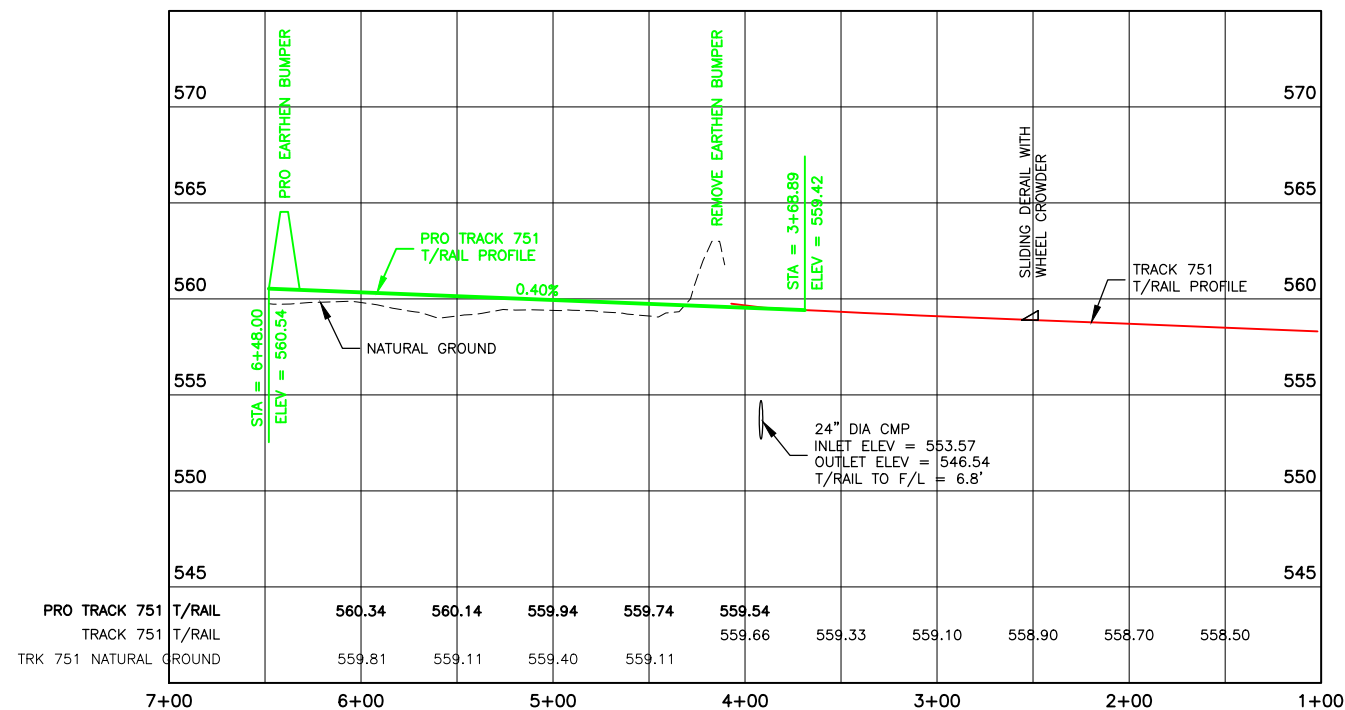
MILE POST 119.4, SEDALIA SUBDIVISION  
ALGOA, COLE COUNTY, MISSOURI

TRACKAGE TO SERVE: ALPLA & MORRIS PKG

PROPOSED TRACK 750 T/RAIL PROFILE



PROPOSED TRACK 751 T/RAIL PROFILE



GENERAL NOTES:

- 1.) ALL WORK AND MATERIALS SHALL COMPLY WITH THE REQUIREMENTS OF THE UNION PACIFIC RAILROAD, (UPRR), AS COVERED UNDER THEIR TECHNICAL SPECIFICATIONS FOR CONSTRUCTION OF INDUSTRIAL TRACKS.
- 2.) ALL EXISTING UTILITIES INDICATED ON THE DRAWINGS ARE ACCORDING TO THE BEST INFORMATION AVAILABLE TO THE ENGINEER. HOWEVER, ALL UTILITIES ACTUALLY EXISTING MAY NOT BE SHOWN. CONTRACTOR IS RESPONSIBLE FOR IDENTIFYING ALL UTILITIES PRIOR TO ANY WORK. UTILITIES DAMAGED BY THE CONTRACTOR DURING HIS WORK OR IN OBTAINING THE LOCATION OF EXISTING UTILITIES SHALL BE REPAIRED OR REPLACED BY THE CONTRACTOR AT HIS EXPENSE. UTILITIES REQUIRING ADJUSTMENT/PROTECTION DUE TO TRACK CONSTRUCTION SHALL BE ADJUSTED/PROTECTED IN ACCORDANCE WITH UPRR REQUIREMENTS.
- 3.) CLEARANCES TO EXISTING OR PROPOSED STRUCTURES MUST MEET AND/OR EXCEED UPRR STANDARDS OR BE COVERED BY AN APPROPRIATE AGREEMENT. RAIL AND CROSSTIE TO BE MARKED WITH YELLOW PAINT AT 13' CLEAR POINT.
- 4.) CONTRACTOR SHALL BE RESPONSIBLE TO PROVIDE ANY AND ALL FACILITIES AS NECESSARY IN ORDER TO ENSURE THAT ALL CURRENT FEDERAL, STATE AND LOCAL REGULATIONS ARE ADHERED TO WITH REGARD TO EROSION/SEDIMENTATION CONTROL THROUGHOUT THE LENGTH OF HIS WORK. ALL EROSION/SEDIMENTATION CONTROL SHALL BE IN ACCORDANCE WITH CURRENT MISSOURI STANDARD SPECIFICATIONS FOR HIGHWAY CONSTRUCTION.
- 5.) WOOD CROSS TIES SHALL BE NEW CREOSOTE TREATED 7" X 9" X 8'-6" (#5 GRADE) WITH 100% END PLATING. ALL TIES SHALL BE NEW OAK OR MIXED HARDWOODS, CREOSOTE TREATED IN ACCORDANCE WITH AREMA OR CURRENT UPRR GUIDELINES AS REFERENCED IN NOTE #1. CROSSTIES OVER CULVERTS TO BE MARKED WITH BLUE PAINT.
- 6.) WALKWAYS FOR SWITCHMAN SHALL BE CONSTRUCTED IN ACCORDANCE WITH THE DETAILS AS SHOWN ON THESE DRAWINGS OR THE FEDERAL, STATE OR LOCAL SPECIFICATIONS WHICHEVER IS THE MOST PROTECTIVE FROM THE STANDPOINT OF SAFETY. WALKWAYS ADJACENT TO PROPOSED TURNOUT AND DERAIL.
- 7.) CURVE DATA SHOWN IS CURVE DEFINITION. ALIGNMENT STATIONING SHOWN ALONG THE ARC IS ARC DEFINITION.
- 8.) NO SOIL BORING INFORMATION HAS BEEN INCORPORATED INTO THE TRACK ROADBED DESIGN.
- 9.) 6" MINIMUM GRANULAR SUBBALLAST REQUIRED, MODOT TYPE 1 AGGREGATE IS ACCEPTABLE.
- 10.) THE SUBBALLAST AND SUBGRADE SHALL BE COMPACTED TO 95% MODIFIED PROCTOR.
- 11.) THE SURVEY DATA AND PROPERTY INFORMATION USED TO DEVELOP THESE PLANS WAS SUPPLIED BY CENTRAL MISSOURI PROFESSIONAL SERVICES.
- 12.) THE UPRR RIGHT OF WAY SHOWN ON THESE PLANS ARE BASED ON RAILROAD VALUATION MAPS. VALUATION STATIONING SHOWN IS BASED OFF OF BRIDGE #1193.
- 13.) THE CONTRACTOR IS REMINDED THAT WORK ON THIS PROJECT REQUIRES WORKING WITH AN EXISTING STRUCTURE/FACILITY. EVERY EFFORT HAS BEEN MADE TO IDENTIFY DISCREPANCIES AND ENSURE THAT THE DETAILS ARE DEPICTED CORRECTLY. THESE DRAWINGS HAVE BEEN PREPARED BASED ON INFORMATION AVAILABLE. HOWEVER, SINCE THIS IS AN EXISTING STRUCTURE/FACILITY, THE CONTRACTOR CAN EXPECT AND SHOULD PLAN ON ENCOUNTERING VARIANCES AND DEVIATIONS BETWEEN THE INFORMATION FOUND IN THESE DRAWINGS AND THE EXISTING SITE CONDITIONS. ACTUAL FIELD CONDITIONS MAY REQUIRE MODIFICATIONS IN CONSTRUCTION DETAILS AND QUANTITIES. THE CONTRACTOR IS RESPONSIBLE TO FIELD VERIFY ALL DETAILS INCLUDING GEOMETRY AND ELEVATIONS PRIOR TO THE INSTALLATION OF ANY MATERIAL. THE CONTRACTOR SHALL SUBMIT TO OWNERS ENGINEER COPIES OF FIELD SURVEYS AND VERIFICATIONS FOR INCLUSION INTO THE CONSTRUCTION RECORDS FOR THE PROJECT.

ISSUED FOR BID  
(01-08-19)

FES #36881

REVISION #	BY	DATE	DESCRIPTION

CONST. PLANS

Central Missouri Professional Services, Inc.  
ENGINEERING - SURVEYING - MATERIALS TESTING  
2500 E. McCARTY (573) 634-3455  
JEFFERSON CITY, MISSOURI 65101 (573) 634-8898

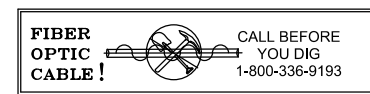
T/RAIL PROFILES  
AND GENERAL NOTES

- COLOR LEGEND:
- EXIST T/RAIL PROFILE —
  - PRO T/RAIL PROFILE —
  - EXIST SURFACE PROFILE - - -

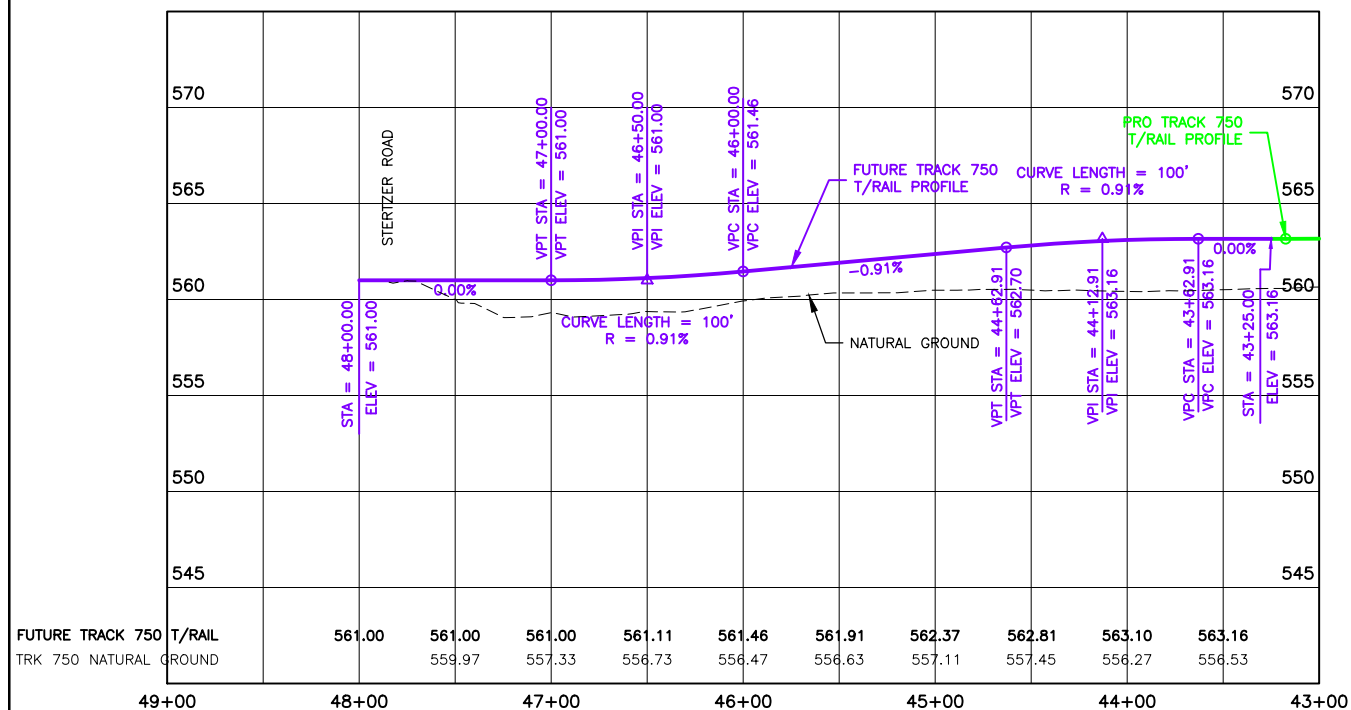


Drawn By: KMS  
Checked By: RSS  
Date: 01-08-19  
Job Number: 16065-1  
Sheet Number: 5

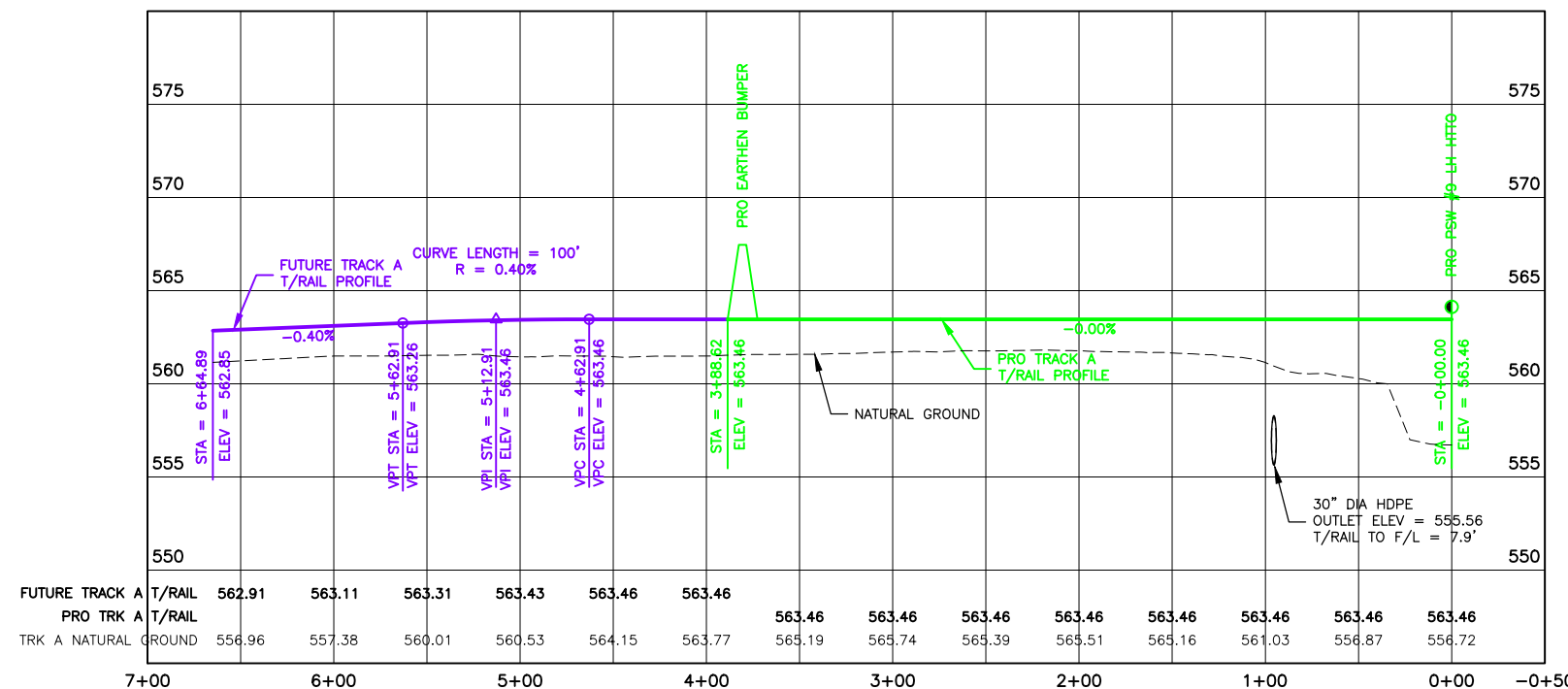
For Use In Agreement With: UPRR  
And ALPLA & COLE COUNTY  
MILE POST 119.4, SEDALIA SUBDIVISION  
ALGOA, COLE COUNTY, MISSOURI  
TRACKAGE TO SERVE: ALPLA & MORRIS PKG



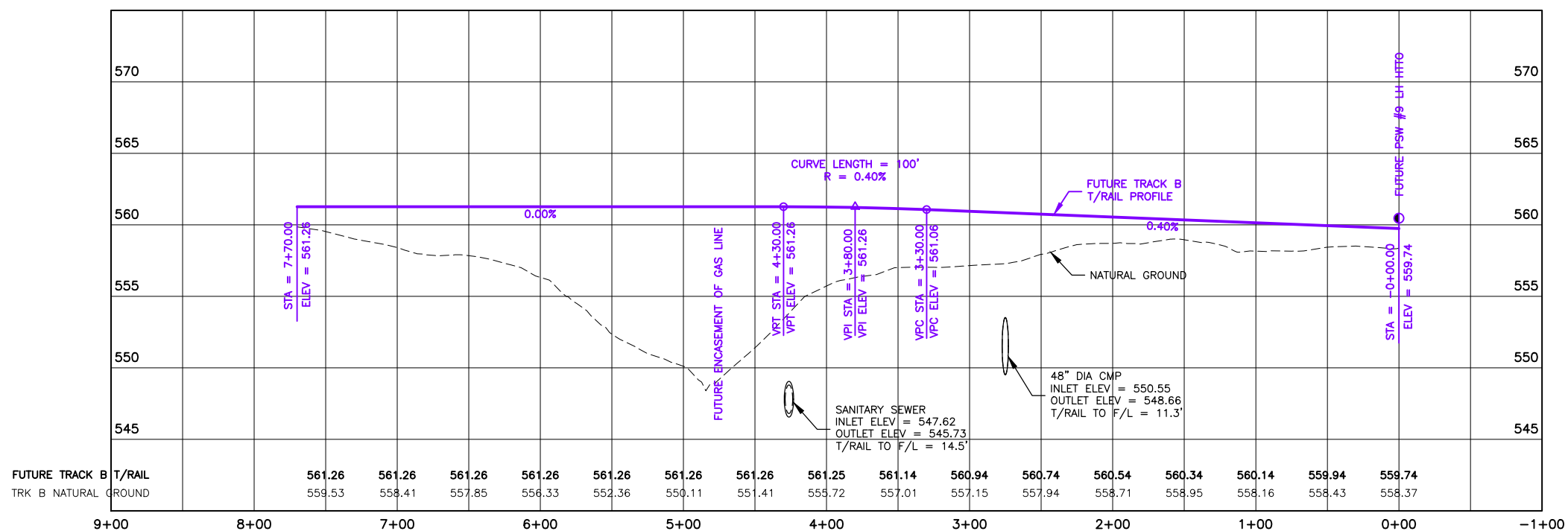
FUTURE TRACK 750 T/RAIL PROFILE



TRACK A T/RAIL PROFILE



FUTURE TRACK B T/RAIL PROFILE



ISSUED FOR BID  
(01-08-19)

CONST. PLANS

REVISION #	BY	DATE	DESCRIPTION

FES #36881

Central Missouri Professional Services, Inc.  
ENGINEERING - SURVEYING - MATERIALS TESTING  
2500 E. McCARTY  
JEFFERSON CITY, MISSOURI 65101  
(573) 634-3455  
(573) 634-8898

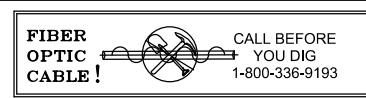
ADDITIONAL T/RAIL PROFILES

- COLOR LEGEND:
- PRO T/RAIL PROFILE
  - FUTURE T/RAIL PROFILE
  - EXIST SURFACE PROFILE

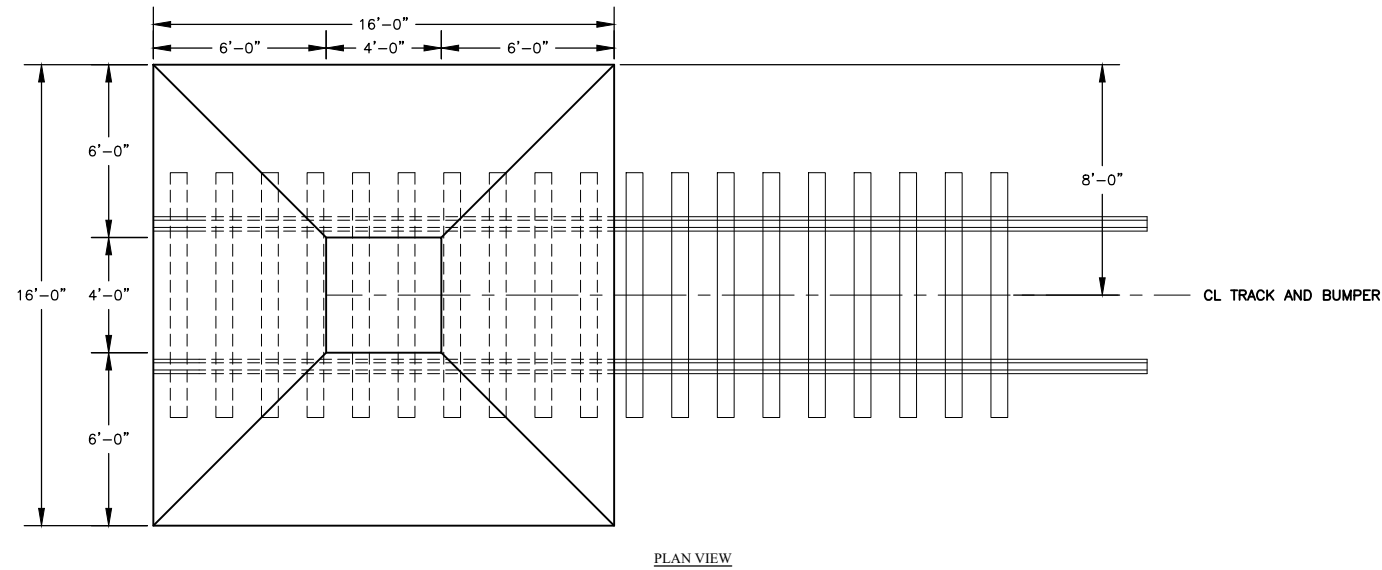


Drawn By: KMS  
Checked By: RSS  
Date: 01-08-19  
Job Number: 16065-1  
Sheet Number: 6

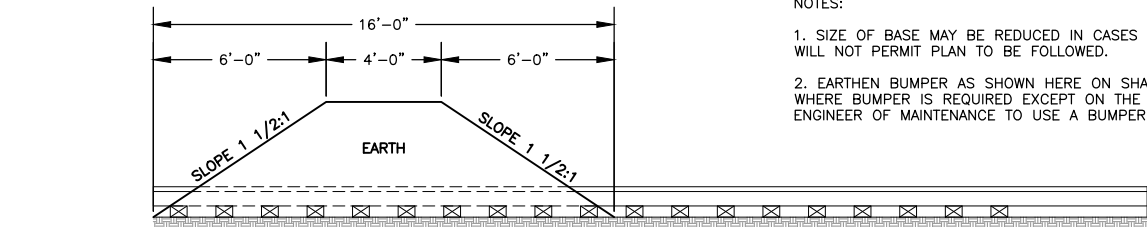
For Use In Agreement With: UPRR  
And ALPLA & COLE COUNTY  
MILE POST 119.4, SEDALIA SUBDIVISION  
ALGOA, COLE COUNTY, MISSOURI  
TRACKAGE TO SERVE: ALPLA & MORRIS PKG



S:\2016\CMPS\Cole County Spur\Design\16065-1.dwg, Details, 1/8/2019 10:19:59 AM, kms



PLAN VIEW



ELEVATION VIEW

**STANDARD EARTH MOUND BUMP POST**

NOT TO SCALE

**NOTES:**

1. SIZE OF BASE MAY BE REDUCED IN CASES WHERE WIDTH OF ROADBED WILL NOT PERMIT PLAN TO BE FOLLOWED.
2. EARTHEN BUMPER AS SHOWN HERE ON SHALL BE USED AT ALL LOCATIONS WHERE BUMPER IS REQUIRED EXCEPT ON THE AUTHORITY OF THE CHIEF ENGINEER OF MAINTENANCE TO USE A BUMPER OF SOME OTHER DESIGN.

SCOPE OF WORK MATRIX					
Task	Industry Supply	UPRR Supply	Industry Construct	UPRR Construct	Description
Ballast	X		X		
Walkway Ballast	X		X		
Turnout	X		X		#9-115# LH Hand Throw Turnout
Rail & OTM	X		X		115# Class 1 Relay Rail (Min)
Ties	X		X		New Creosote Treated 7"x 9"x 8'-6" #5 Grade
Comp Joint Bars	X		X		Tie Into Existing Tracks
Comp Field Welds					N/A
Field Welds					N/A
Derailed	X		X		Sliding Derail With Wheel Crowder
Insulated Joints					N/A
Signs					N/A
Road Xings					N/A
Other	X		X		Earth Mound Bump Posts

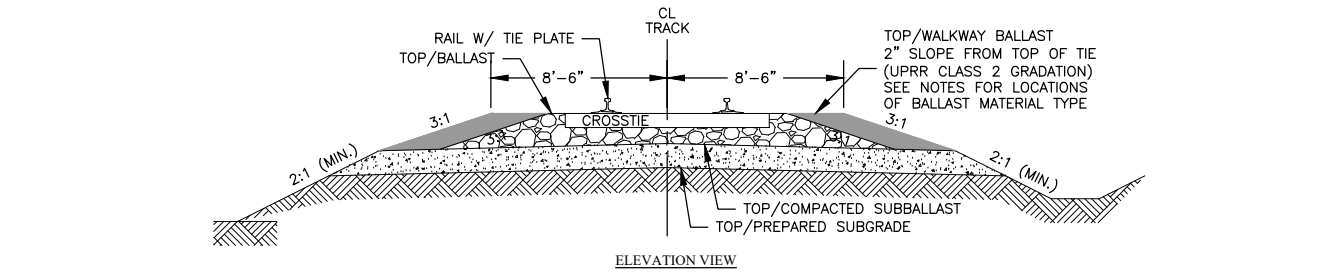
**SCOPE OF WORK**

**WORK BY UPRR**

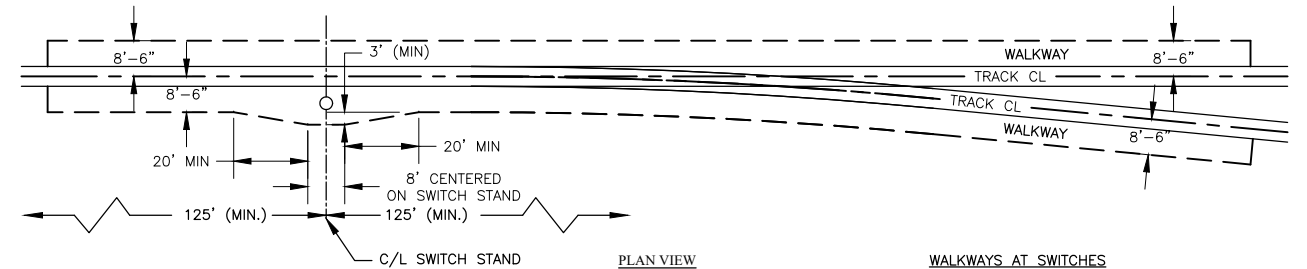
- NO WORK BY UPRR

**WORK BY INDUSTRY**

- CONSTRUCT/INSTALL (1) #9-115# LH HTTO
- CONSTRUCT/INSTALL (1) SLIDING DERAIL WITH WHEEL CROWDER
- CONSTRUCT 1,505 TF OF TRACK WITH 115# RAIL (MIN)
- CONSTRUCT 3 EARTHEN BUMBERS
- REMOVE 2 EARTHEN BUMBERS
- ALL RELATED EARTHWORK (SEE SHEET #12 FOR QUANTITIES)



ELEVATION VIEW



PLAN VIEW

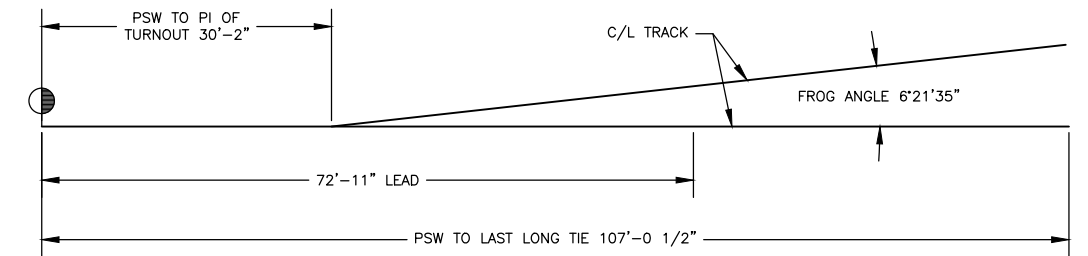
**WALKWAY STANDARD FOR TURNOUTS AND DERAILS**

NOT TO SCALE

**WALKWAYS AT SWITCHES**

INSIDE EDGE OF WALKWAY MUST BE BETWEEN THE OUTSIDE EDGE OF THE RAIL AND A POINT THREE FEET FROM C/L OF THE TRACK

**ISSUED FOR BID  
(01-08-19)**



**UPRR #9 TURNOUT GEOMETRY**

(NOT TO SCALE)

- 16'-6" STRAIGHT SAMSON SWITCH POINTS
- RBM FROG (115# MIN)

**REVISION # BY DATE DESCRIPTION**

REVISION #	BY	DATE	DESCRIPTION

FES #36881

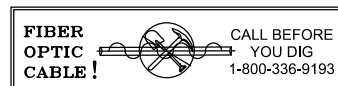
**CONST. PLANS**

Central Missouri Professional Services, Inc.  
ENGINEERING - SURVEYING - MATERIALS TESTING  
2500 E. McCARTY (573) 634-3455  
JEFFERSON CITY, MISSOURI 65101 (573) 634-8898

**DETAILS**



11166 TESSON FERRY ROAD  
SUITE 100  
ST. LOUIS MO, 63123-6966  
(314) 729-7600

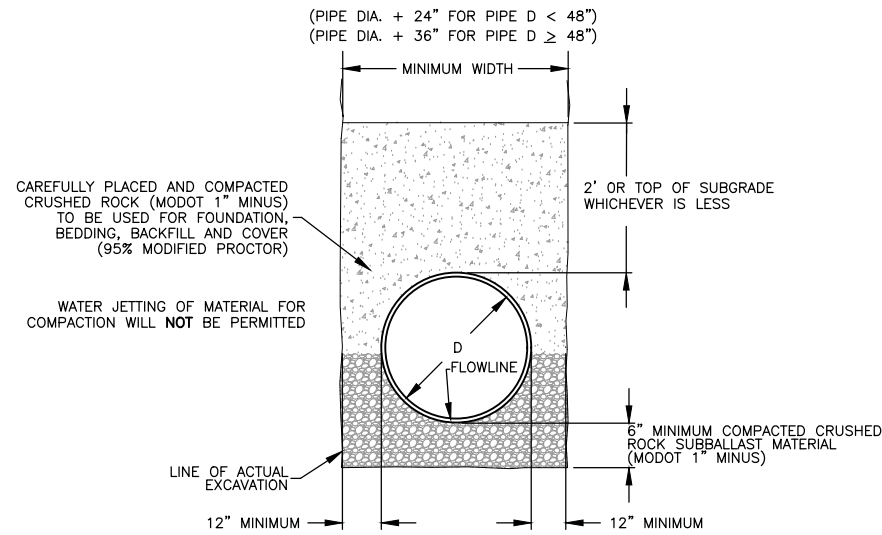


Drawn By: KMS  
Checked By: RSS  
Date: 01-08-19  
Job Number: 16065-1  
Sheet Number: 7

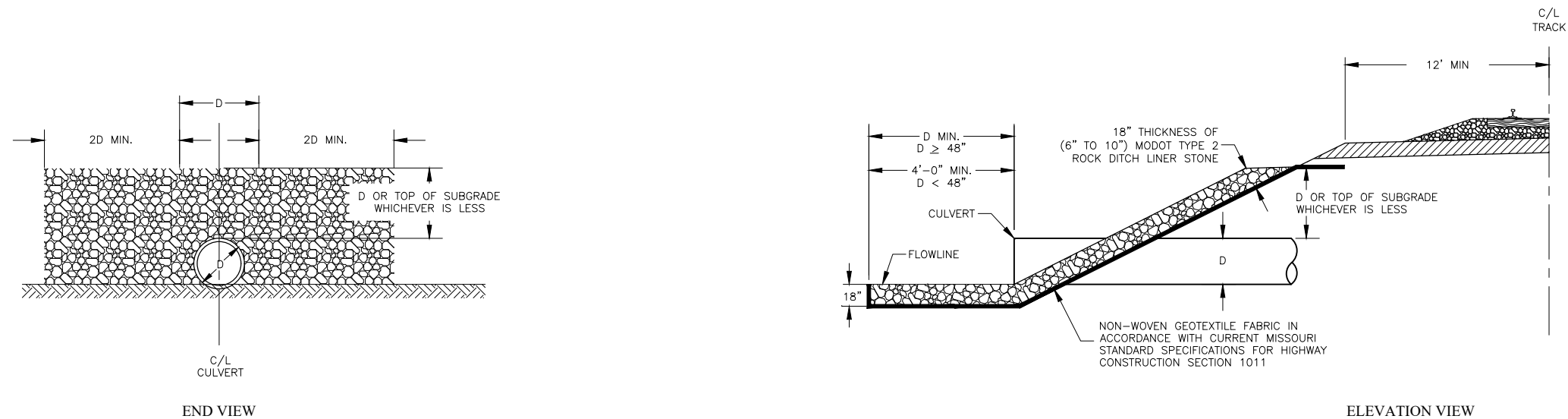
For Use In Agreement With: UPRR  
And ALPLA & COLE COUNTY  
MILE POST 119.4, SEDALIA SUBDIVISION  
ALGOA, COLE COUNTY, MISSOURI  
TRACKAGE TO SERVE: ALPLA & MORRIS PKG

S:\2016\CMPS\Cole County Spur\Design\16065-1.dwg, PP Details, 1/8/2019 10:20:04 AM, kms

ISSUED FOR BID  
(01-08-19)



PIPE BEDDING DETAIL  
NOT TO SCALE



RIPRAP PROTECTION DETAIL AT CULVERT ENDS  
(UP AND DOWN STREAM)  
NOT TO SCALE

REVISION #	BY	DATE	DESCRIPTION

CONST. PLANS

FES #36881

Central Missouri Professional Services, Inc.  
ENGINEERING - SURVEYING - MATERIALS TESTING  
2500 E. McCARTY  
JEFFERSON CITY, MISSOURI 65101  
(573) 634-3455  
(573) 634-8898

**DESIGN NINE**  
ENGINEERING SERVICES FOR RAILROADS AND INDUSTRY

11166 TESSON FERRY ROAD  
SUITE 100  
ST. LOUIS MO, 63123-6966  
(314) 729-7600

PIPE PROTECTION DETAILS

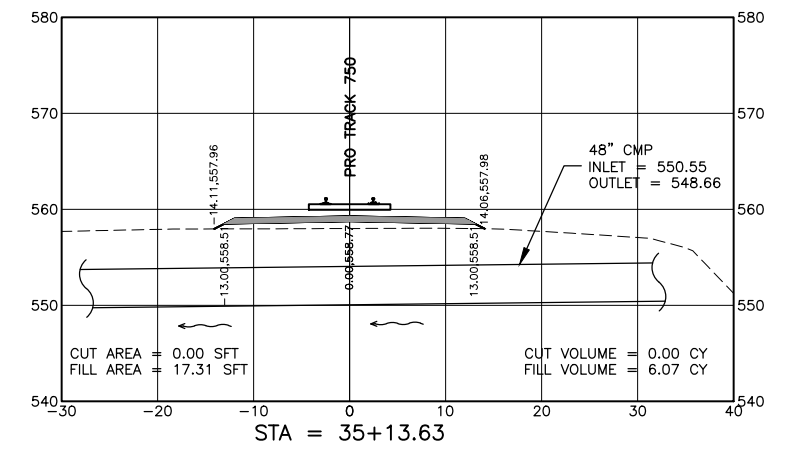
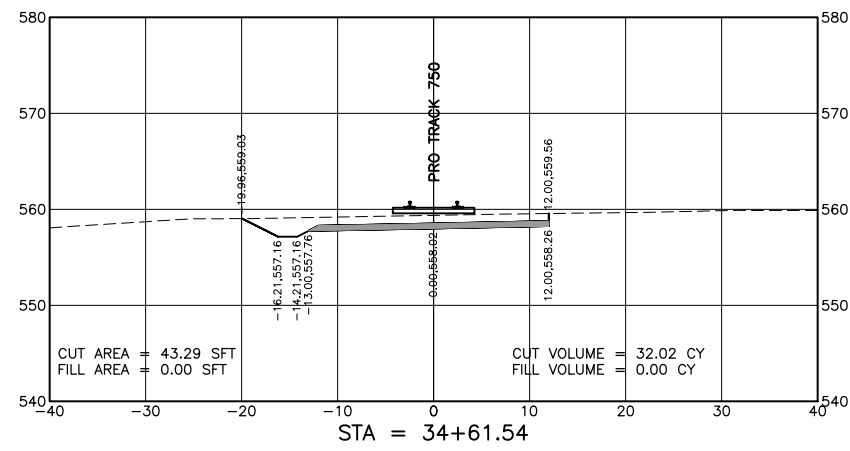
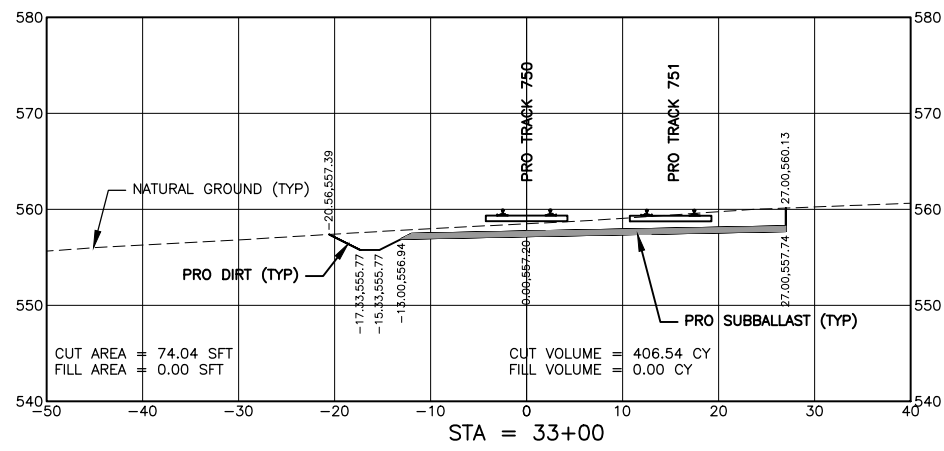
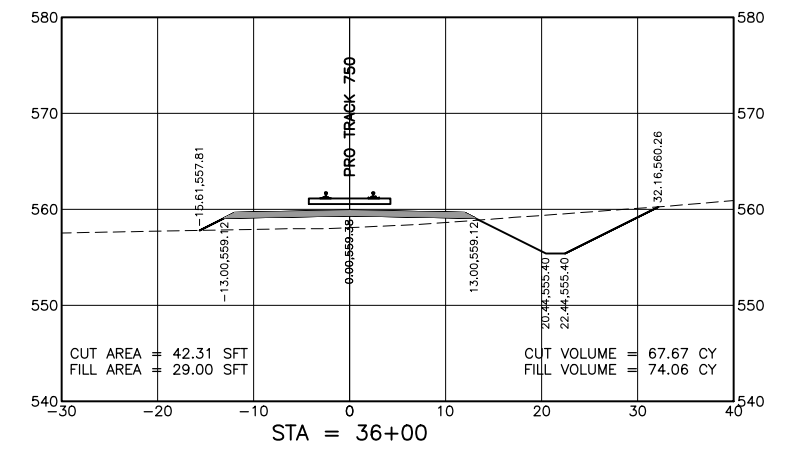
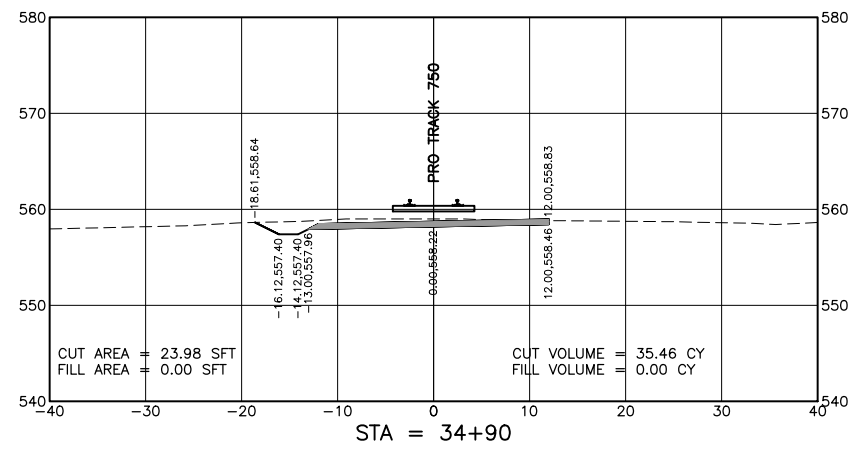
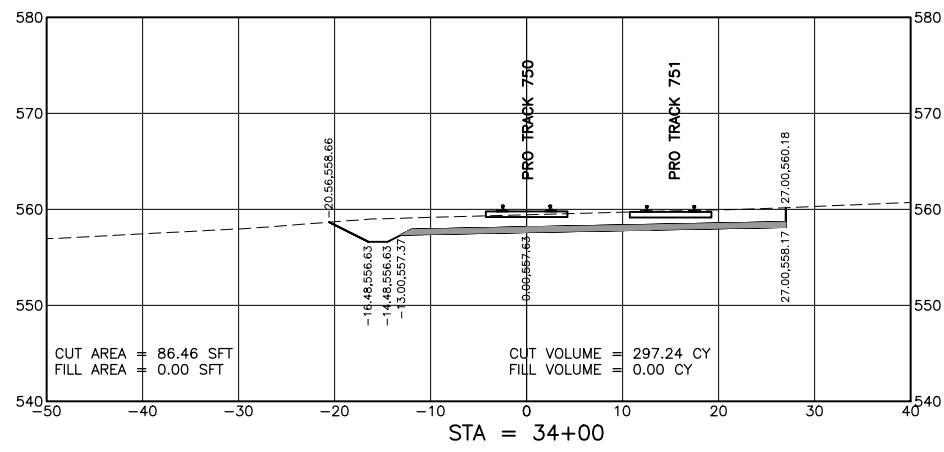
**FIBER OPTIC CABLE!** CALL BEFORE YOU DIG  
1-800-336-9193



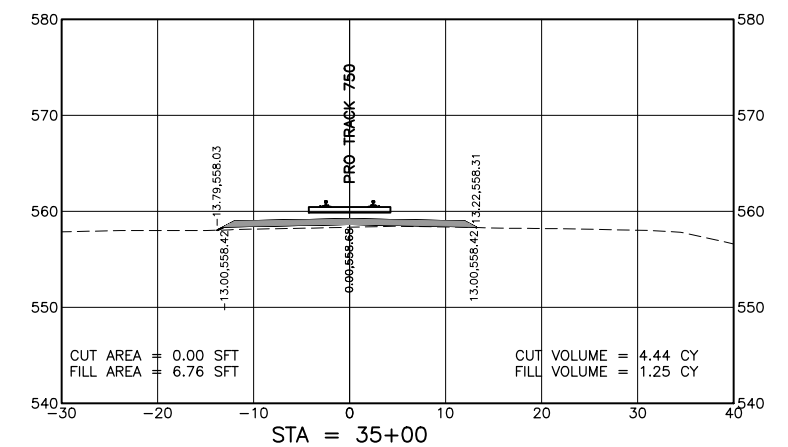
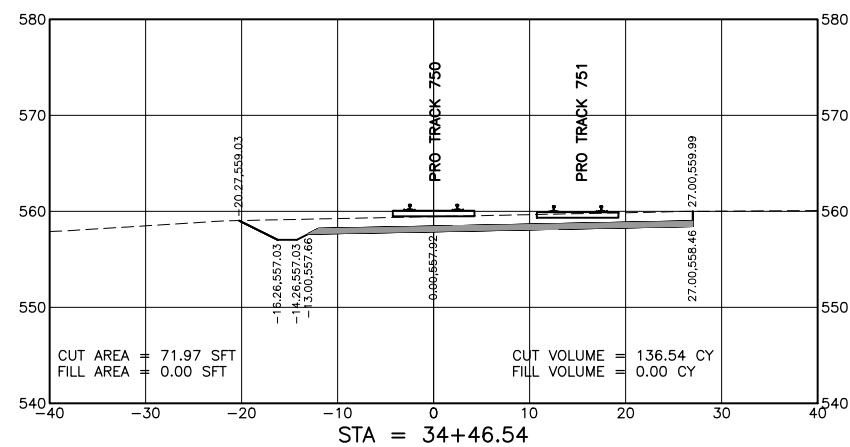
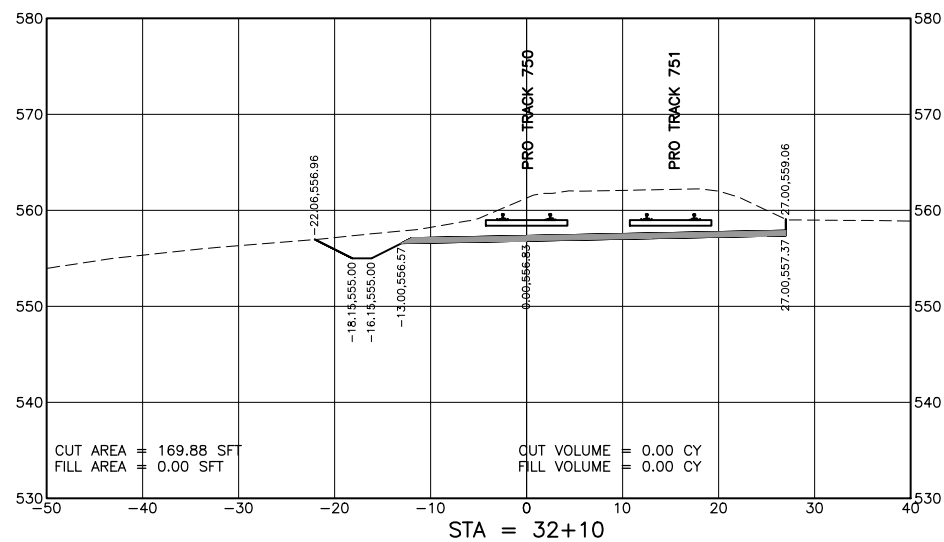
Drawn By:	KMS
Checked By:	RSS
Date:	01-08-19
Job Number :	16065-1
Sheet Number :	8

For Use In Agreement With:	UPRR
And	ALPLA & COLE COUNTY
MILE POST 119.4, SEDALIA SUBDIVISION ALGOA, COLE COUNTY, MISSOURI	
TRACKAGE TO SERVE:	ALPLA & MORRIS PKG

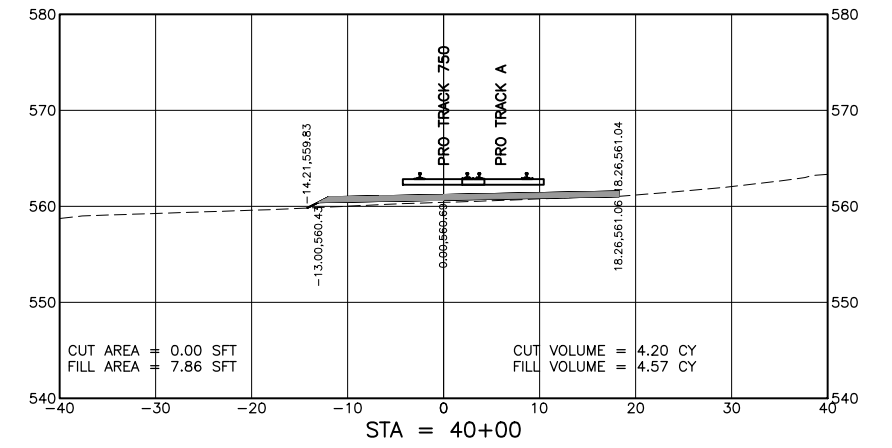
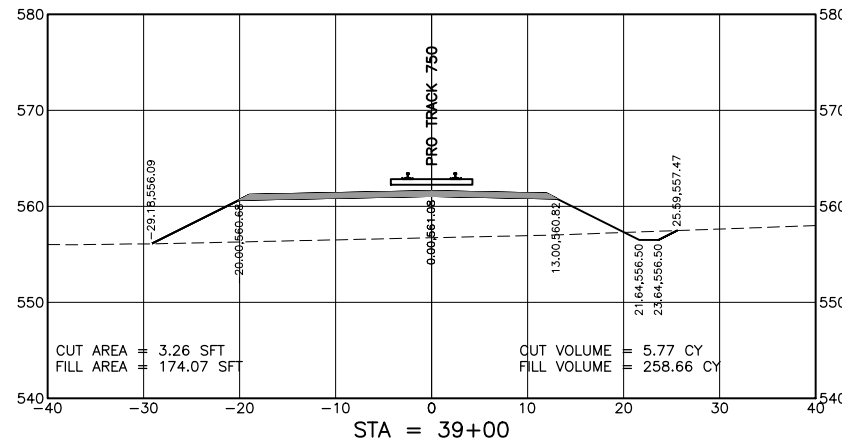
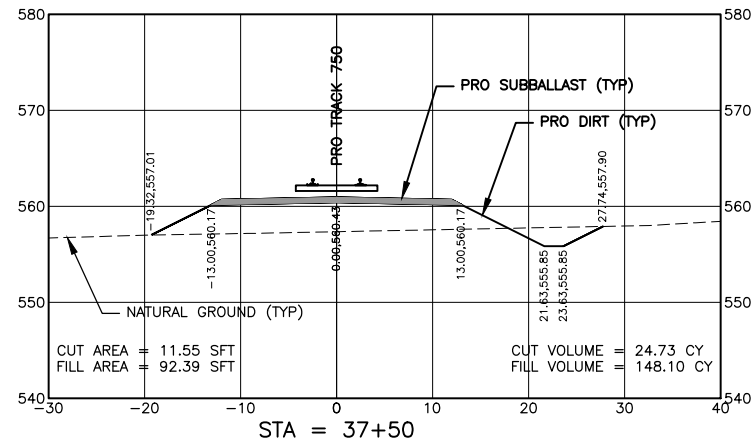
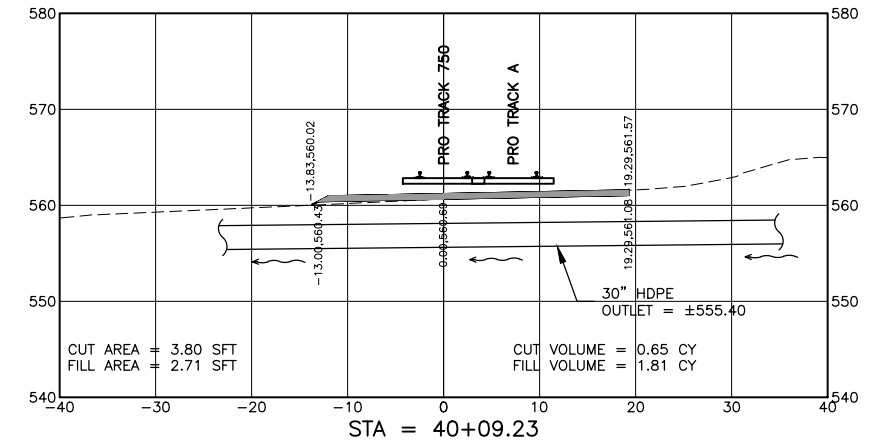
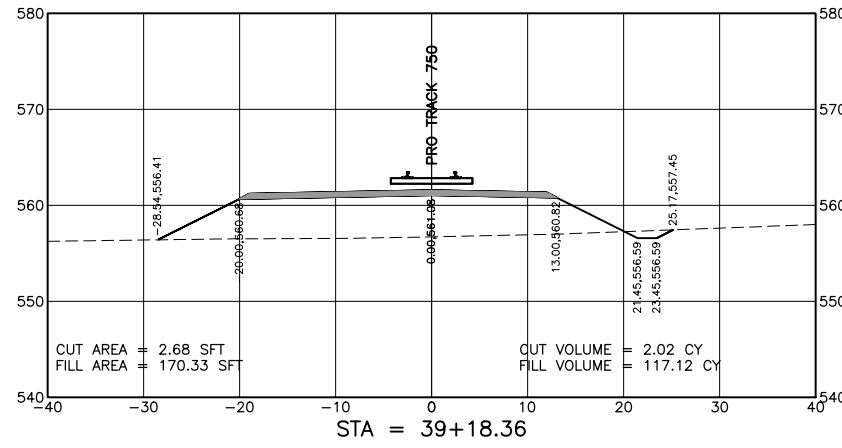
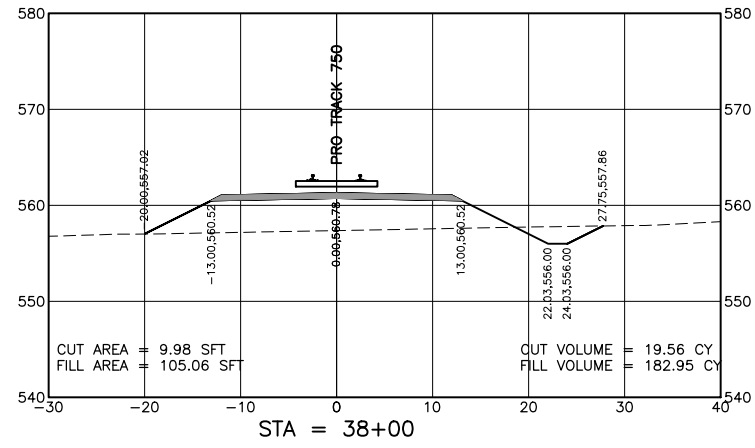
S:\2016\CMPS\Cole County Spur\Design\16065-1.dwg, X Sect 1, 1/8/2019 10:20:09 AM, kms



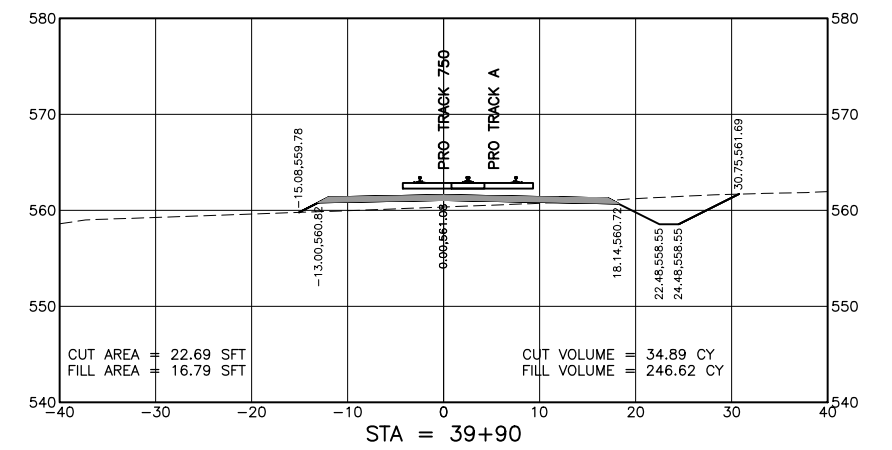
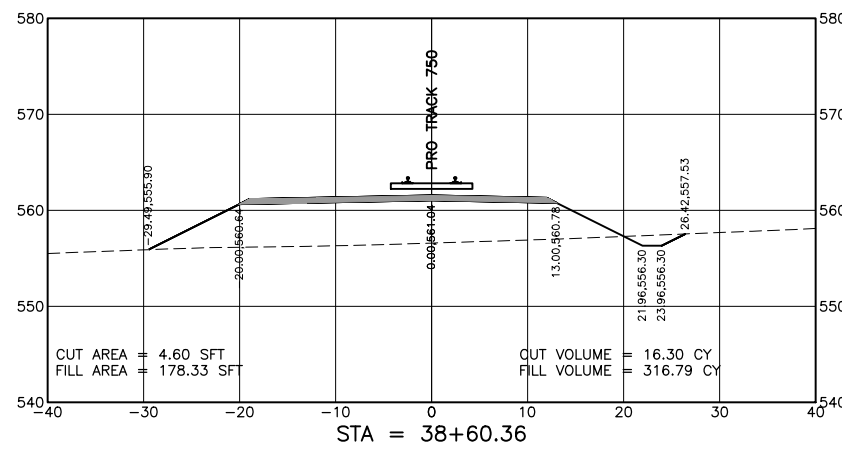
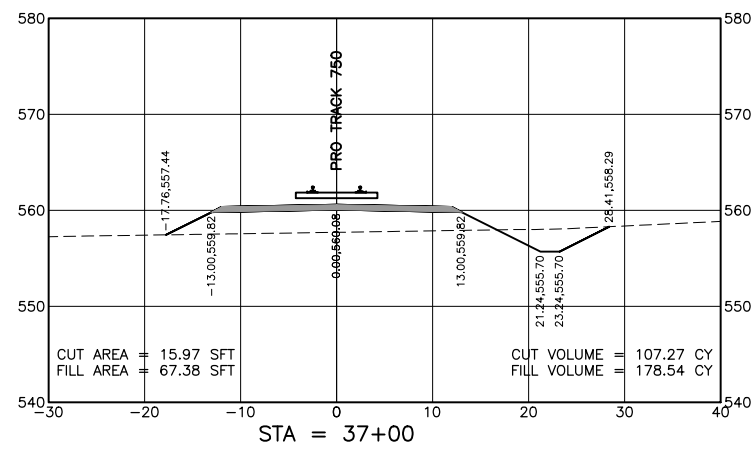
ISSUED FOR BID  
(01-08-19)



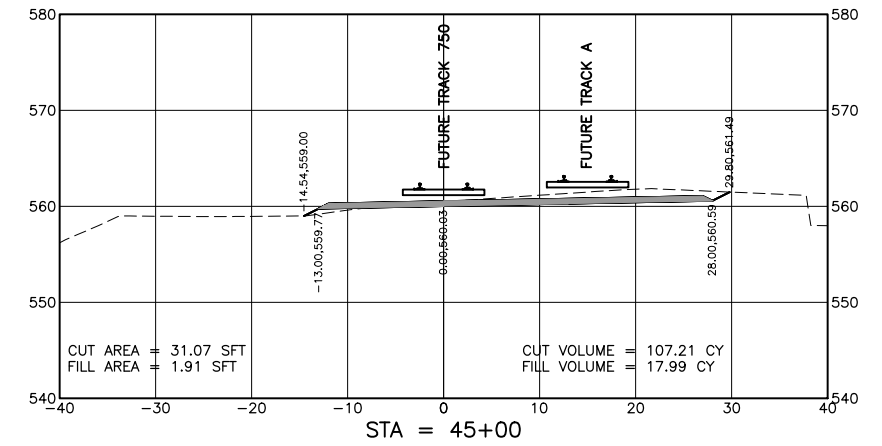
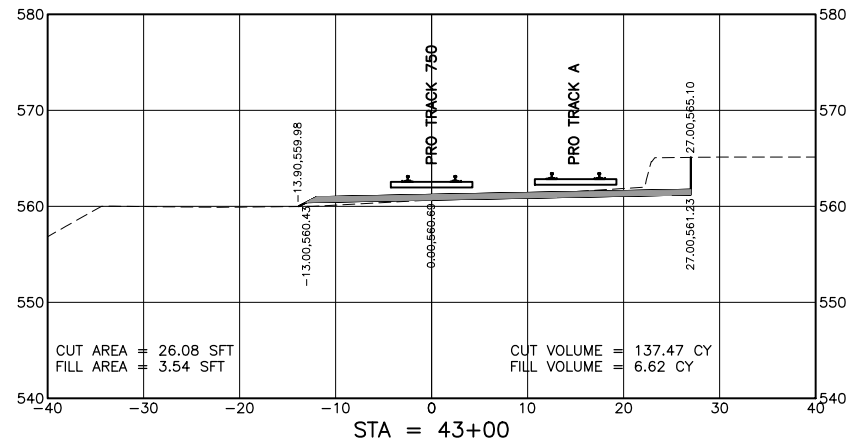
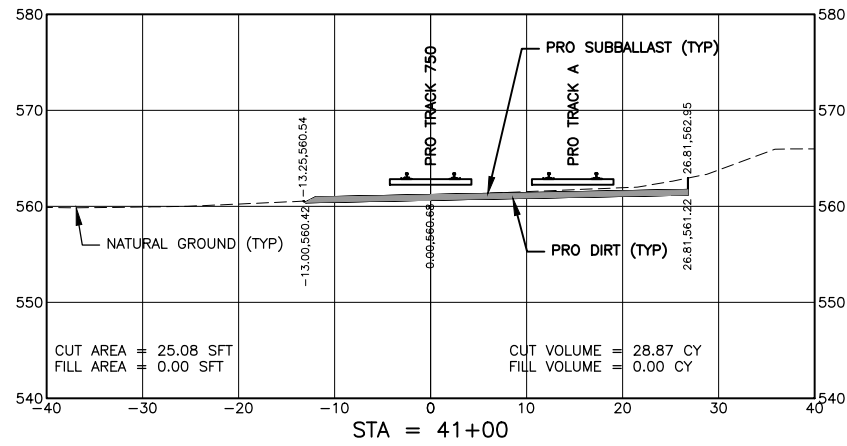
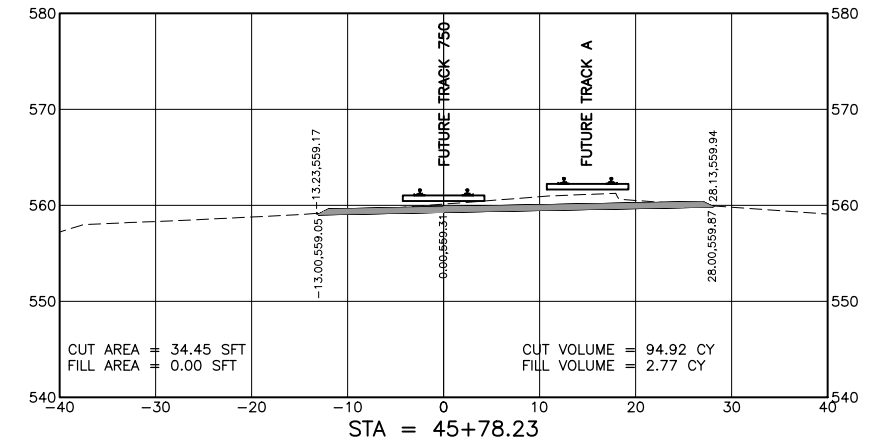
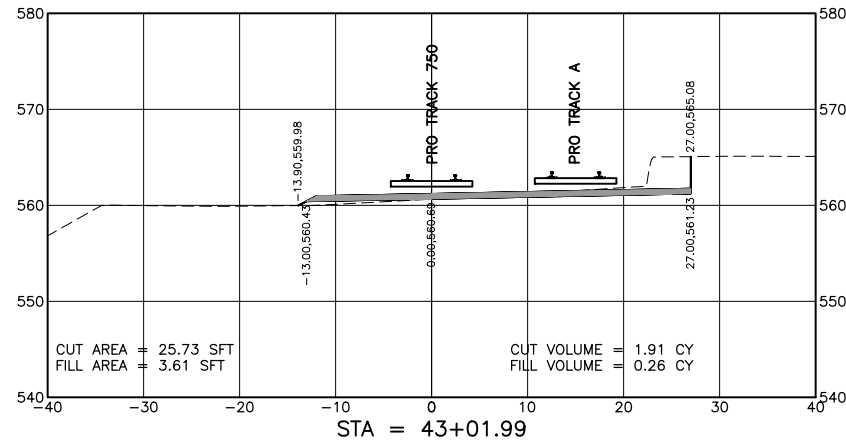
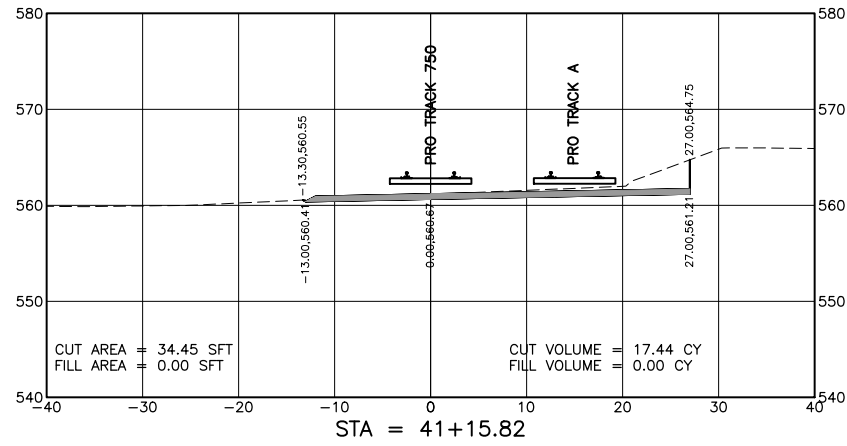
S:\2016\CMPS\Cole County Spur\Design\16065-1.dwg, X Sect 2, 1/8/2019 10:20:14 AM, kms



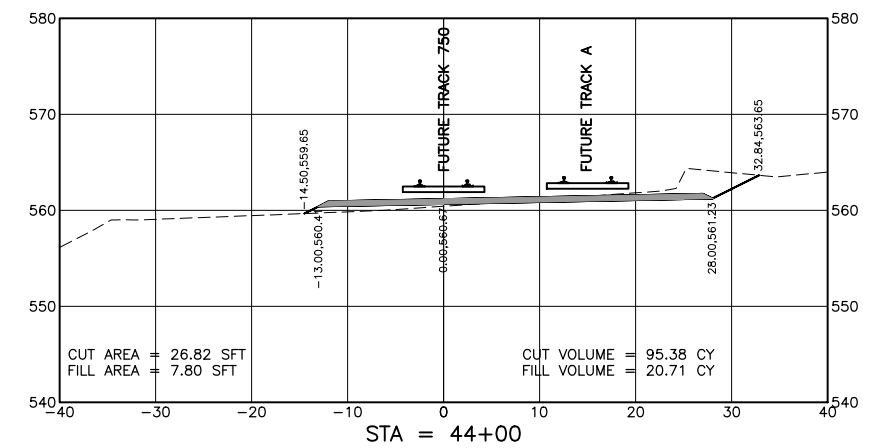
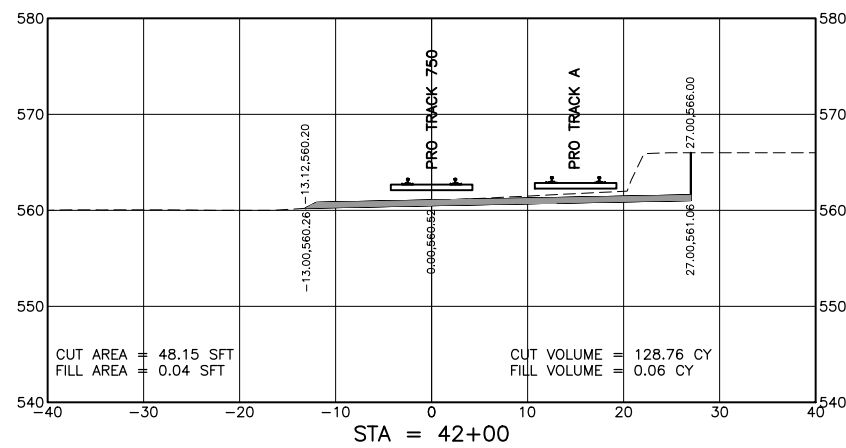
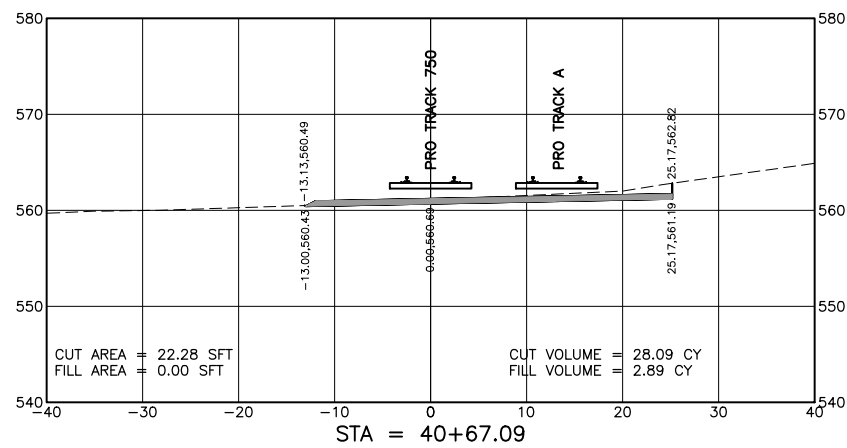
ISSUED FOR BID  
(01-08-19)



S:\2016\CMPS\Cole County Spur\Design\16065-1.dwg, X Sect 3, 1/8/2019 10:20:19 AM, kms



ISSUED FOR BID  
(01-08-19)



S:\2016\CMPS\Cole County Spur\Design\16065-1.dwg, Earthwork Quantities, 1/8/2019 10:20:24 AM, kms

PRO DIRT WORK BASELINE - EARTHWORK TABLE							
STATION	CUT AREA (SQFT)	FILL AREA (SQFT)	CUT VOLUME (CY)	FILL VOLUME (CY)	CUMULATIVE CUT VOLUME (CY)	CUMULATIVE FILL VOLUME (CY)	NET VOLUME (CY)
32+10	169.88	0.00	0.00	0.00	0.00	0.00	0.00
33+00	74.04	0.00	406.54	0.00	406.54	0.00	406.54
34+00	86.46	0.00	297.24	0.00	703.78	0.00	703.78
34+46.5	71.97	0.00	136.54	0.00	840.32	0.00	840.32
34+61.5	43.29	0.00	32.02	0.00	872.34	0.00	872.34
34+90	23.98	0.00	35.46	0.00	907.80	0.00	907.80
35+00	0.00	6.76	4.44	1.25	912.24	1.25	910.99
35+13.6	0.00	17.31	0.00	6.07	912.24	7.32	904.91
36+00	42.31	29.00	67.67	74.06	979.91	81.39	898.52
37+00	15.97	67.38	107.27	178.54	1,087.18	259.92	827.26
37+50	11.55	92.39	24.73	148.10	1,111.91	408.02	703.88
38+00	9.98	105.06	19.56	182.95	1,131.47	590.98	540.49
38+60.4	4.60	178.33	16.30	316.79	1,147.76	907.77	239.99
39+00	3.26	174.07	5.77	258.66	1,153.54	1,166.43	-12.89
39+18.4	2.68	170.33	2.02	117.12	1,155.56	1,283.55	-127.99
39+90	22.69	16.79	34.89	246.62	1,190.45	1,530.17	-339.72
40+00	0.00	7.86	4.20	4.57	1,194.66	1,534.74	-340.08
40+09.2	3.80	2.71	0.65	1.81	1,195.31	1,536.54	-341.24
40+67.1	22.28	0.00	28.09	2.89	1,223.39	1,539.43	-316.04
41+00	25.08	0.00	28.87	0.00	1,252.26	1,539.43	-287.17

PRO DIRT WORK BASELINE - EARTHWORK TABLE							
STATION	CUT AREA (SQFT)	FILL AREA (SQFT)	CUT VOLUME (CY)	FILL VOLUME (CY)	CUMULATIVE CUT VOLUME (CY)	CUMULATIVE FILL VOLUME (CY)	NET VOLUME (CY)
41+15.8	34.45	0.00	17.44	0.00	1,269.70	1,539.43	-269.74
42+00	48.15	0.04	128.76	0.06	1,398.46	1,539.49	-141.03
43+00	26.08	3.54	137.47	6.62	1,535.93	1,546.12	-10.19
43+02	25.73	3.61	1.91	0.26	1,537.84	1,546.38	-8.54
44+00	26.82	7.80	95.38	20.71	1,633.22	1,567.09	66.13
45+00	31.07	1.91	107.21	17.99	1,740.42	1,585.08	155.34
45+78.2	34.45	0.00	94.92	2.77	1,835.35	1,587.85	247.50

ISSUED FOR BID  
(01-08-19)

PRO DIRT WORK BASELINE - SUB-BALLAST TABLE			
STATION	AREA (SQFT)	VOLUME (CY)	CUMULATIVE VOLUME (CY)
32+10	19.75	0.00	0.00
33+00	19.75	65.83	65.83
34+00	19.75	73.15	138.98
34+46.5	19.75	34.04	173.02
34+61.5	12.25	8.89	181.91
34+90	12.25	12.91	194.83
35+00	12.50	4.58	199.41
35+13.6	12.50	6.31	205.72
36+00	12.50	39.99	245.70
37+00	12.50	46.30	292.00
37+50	12.50	23.15	315.15
38+00	12.50	23.15	338.30
38+60.4	16.00	31.86	370.16
39+00	16.00	23.49	393.64
39+18.4	16.00	10.88	404.53
39+90	15.07	41.18	445.71
40+00	15.38	5.64	451.35
40+09.2	15.89	5.35	456.69
40+67.1	18.83	37.28	493.97
41+00	19.65	23.46	517.43

PRO DIRT WORK BASELINE - SUB-BALLAST TABLE			
STATION	AREA (SQFT)	VOLUME (CY)	CUMULATIVE VOLUME (CY)
41+15.8	19.75	11.54	528.97
42+00	19.75	61.58	590.55
43+00	19.75	73.15	663.70
43+02	19.75	1.45	665.15
44+00	20.00	72.15	737.30
45+00	20.00	74.07	811.37
45+78.2	20.00	57.95	869.32

EARTHWORK QUANTITIES

CUT = 1,840 CY  
FILL = 1,590 CY  
SUBBALLAST = 1,740 NT

REVISION #	BY	DATE	DESCRIPTION	CONST. PLANS

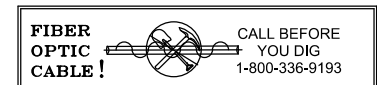

FES #36881

Central Missouri Professional Services, Inc.  
ENGINEERING - SURVEYING - MATERIALS TESTING  
2500 E. McCARTY (573) 634-3455  
JEFFERSON CITY, MISSOURI 65101 (573) 634-8898



11166 TESSON FERRY ROAD  
SUITE 100  
ST. LOUIS MO, 63123-6966  
(314) 729-7600

EARTHWORK QUANTITIES

Drawn By: KMS  
Checked By: RSS  
Date: 01-08-19  
Job Number: 16065-1  
Sheet Number: 12

For Use In Agreement With: UPRR  
And ALPLA & COLE COUNTY

MILE POST 119.4, SEDALIA SUBDIVISION  
ALGOA, COLE COUNTY, MISSOURI

TRACKAGE TO SERVE: ALPLA & MORRIS PKG



**EROSION CONTROL NOTES**  
 Land disturbance activities on this site are permitted under the Cole County's Missouri General Operating Permit #MOR-100034. A Stormwater Pollution Prevention Plan (SWPPP) has been developed for this project. An abridged SWPPP is outlined below. Please refer to the SWPPP document for complete requirements. The contractor shall be required to submit an application for a Grading Permit to the City of Jefferson, Public Works Department, prior to commencing work.

The SWPPP and Erosion Control Plans are not intended to dictate construction phasing but are intended to indicate Best Management Practices that should be in place during various phases of construction. The contractor shall be responsible for updating and modifying the SWPPP and Erosion Control Plan based on his construction sequence, and to address field conditions.

In addition, the contractor is encouraged to reference the document "Protecting Water Quality", January 2011 edition, as Prepared by the Missouri Department of Natural Resources for further guidance on installation and maintenance of construction site erosion, sediment and stormwater control practices.

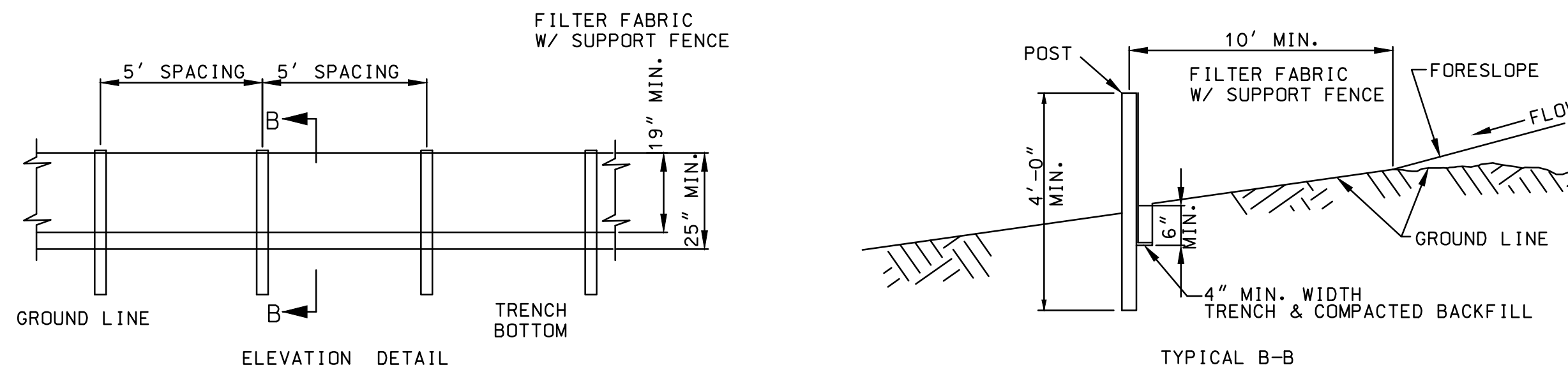
- Contractor shall provide all materials, tools, equipment and labor as necessary to install and maintain adequate erosion and siltation controls required to prevent soil erosion from leaving the project site. It shall be the Contractor's sole responsibility to ensure that methods utilized are adequate and comply with requirements of the Missouri DNR Land Disturbance Permit, specifications and other governmental agencies having jurisdiction over the work.
- The Contractor shall have the responsibility for resolving complaints in the event that complaints or damage claims are filed due to damages occurring adjacent to or downstream from property by sediment resulting from erosion on the project site.
- The Contractor shall install erosion control measures as shown on the drawings prior to beginning earthwork operations.
- The Contractor shall maintain and inspect all sediment control measures during construction. The Contractor shall also keep logs of all inspections and maintenance performed as required by the permit. Inspections are required weekly or following rainfall that produces runoff.
- All sediment shall remain on site and surrounding streets shall be kept clear of all mud and debris.
- The contractor shall phase grading operations to minimize the amount of disturbed area.
- Sediment Barrier Fence, is to be installed as shown on the plans. The barrier shall be constructed of either:
  - A continuous line of touching hay bales placed end to end and securely staked to prevent movement of the bales. (see Erosion Control Detail Sheet)
  - A continuous silt fence (see Erosion Control Detail Sheet).
  - A wood mulch berm (see Erosion Control Detail Sheet)
  - 12" straw wattle.
- Accumulated sediment shall be removed and the sedimentation barriers maintained as needed to prevent sedimentation bypass of the barrier. Removed sediment shall be disposed of in a location where sediment will not again erode into the construction area or into natural waterways.
- Slopes shall be left in a rough condition during grading operations.
- Erosion control measures are to remain in place until 70% ground cover has been established.
- Sediment shall be removed from storm water drainage systems. Removed sediment shall be captured and disposed of in a location where sediment will not again erode into the construction area or into natural waterways.
- Contractor shall be responsible for installing any additional erosion control measures as he/she deems necessary. Upon installing additional erosion control measures, or making modifications to the erosion control plan, the contractor shall update the SWPPP and Erosion Control Plan.
- Temporary seeding shall be used to stabilize disturbed areas that will not be brought to final grade within 30 days, or when the season is not suitable for permanent seeding. A qualified professional shall be consulted to recommend necessary soil amendments, and seeding mixtures.
- At completion of site grading and other related construction activities, all disturbed areas within the project site shall be seeded and mulched.

**EROSION CONTROL PHASING:**

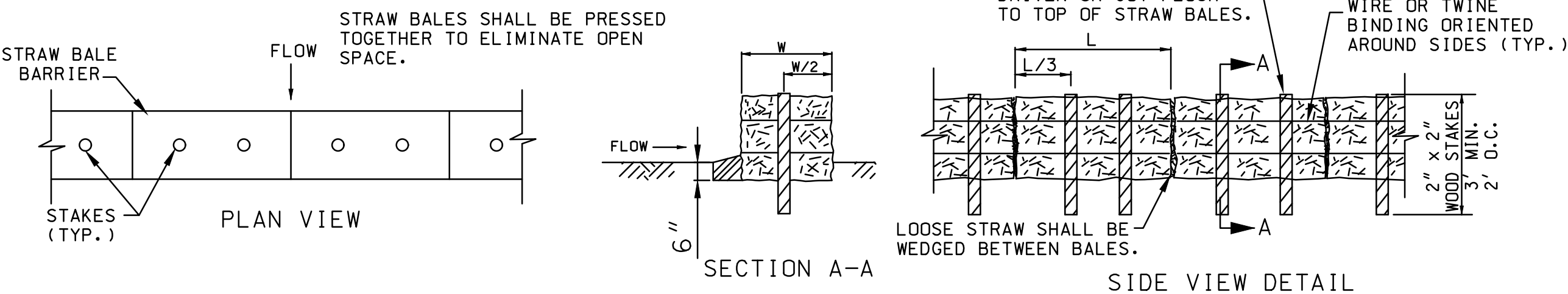
- Construct temporary construction entrance at location shown on the plan sheet.
- Install perimeter sediment barrier fence at locations shown on the plan sheet.
- Begin site grading operations.
- Install erosion control blanket and ditch checks as grading progresses.
- Non-paved areas that are brought to final grade shall be seeded and mulched as soon as possible.
- Remove silt fence only after all exposed surfaces are stabilized.

**STORM WATER QUALITY BMP SUMMARY**

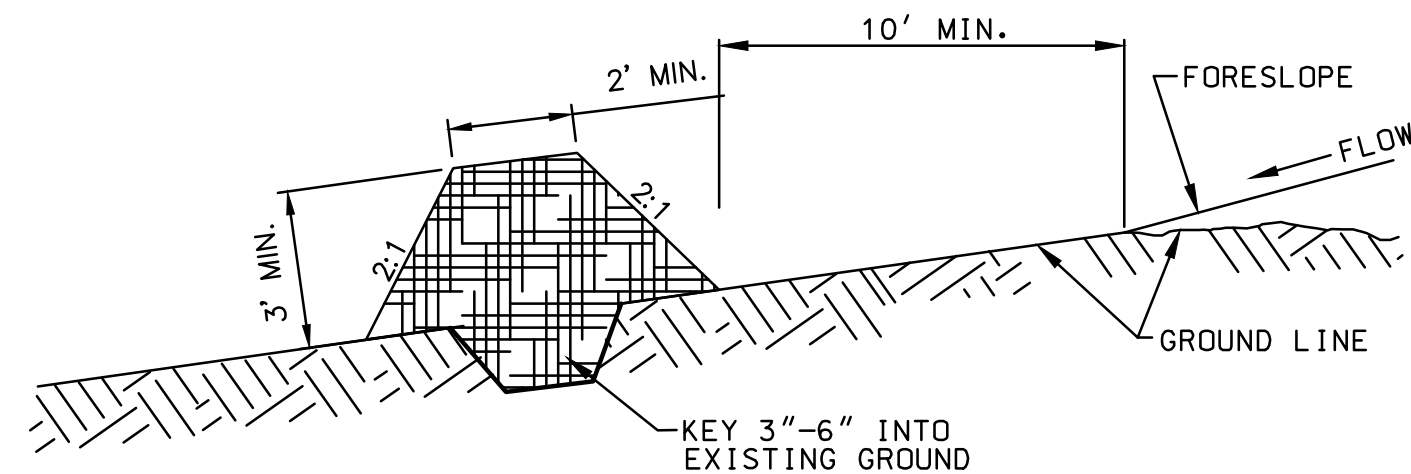
- TEMPORARY MEASURES:**
- PERIMETER SEDIMENT CONTROL
  - AGGREGATE CONSTRUCTION ENTRANCE
  - PHASING INFORMATION
  - SEDIMENT CONTROL
  - MAINTENANCE RESPONSIBILITY INFORMATION
  - STAGING, STORAGE AREAS IDENTIFIED
  - INSPECTION LOGS
- PERMANENT MEASURES:**
- RIPARIAN CORRIDOR PRESERVED
  - VEGETATED FILTER STRIPS
  - STREAM SETBACKS
  - PERMANENT SEEDING



**FABRIC SILT FENCE**

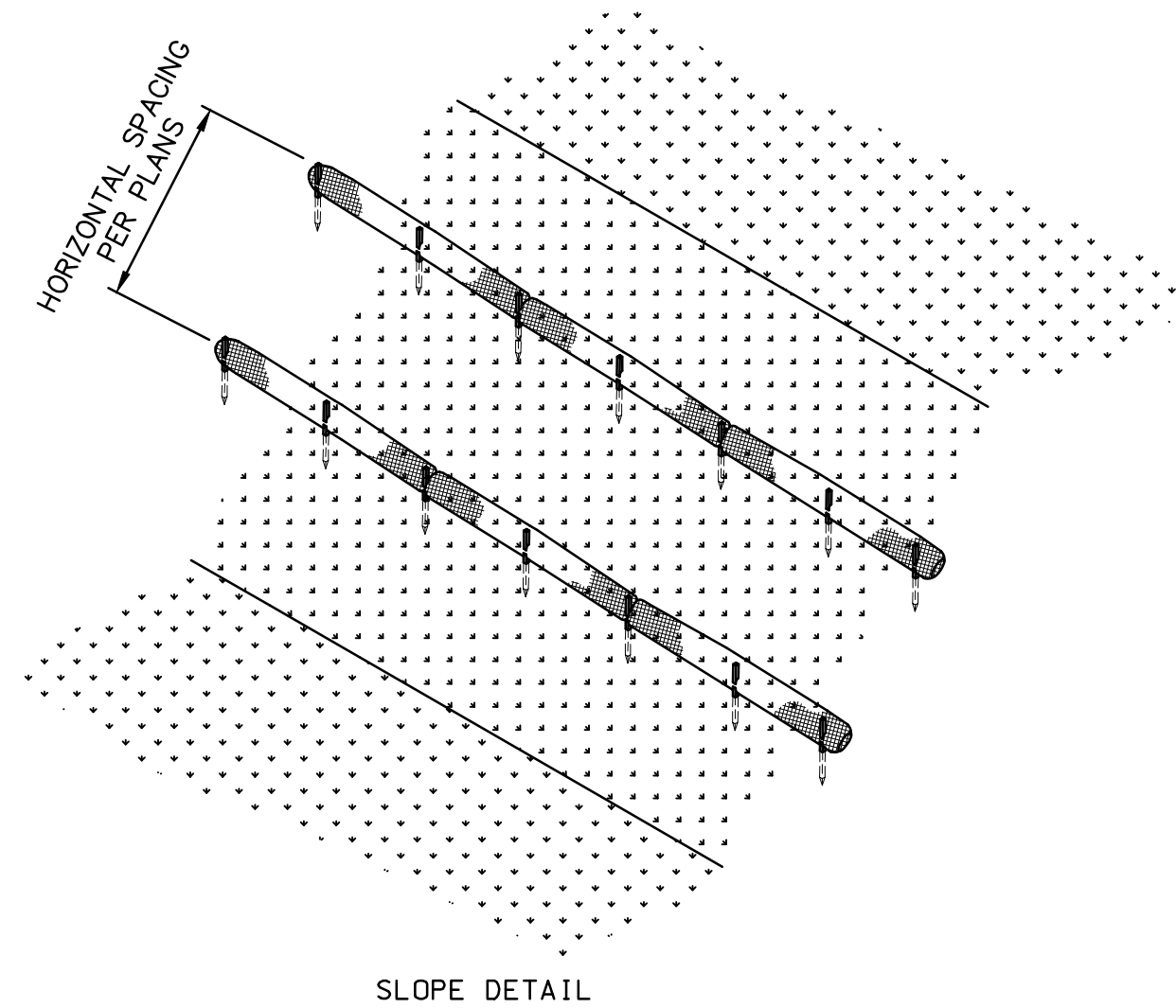


**STRAW BALE SILT FENCE**

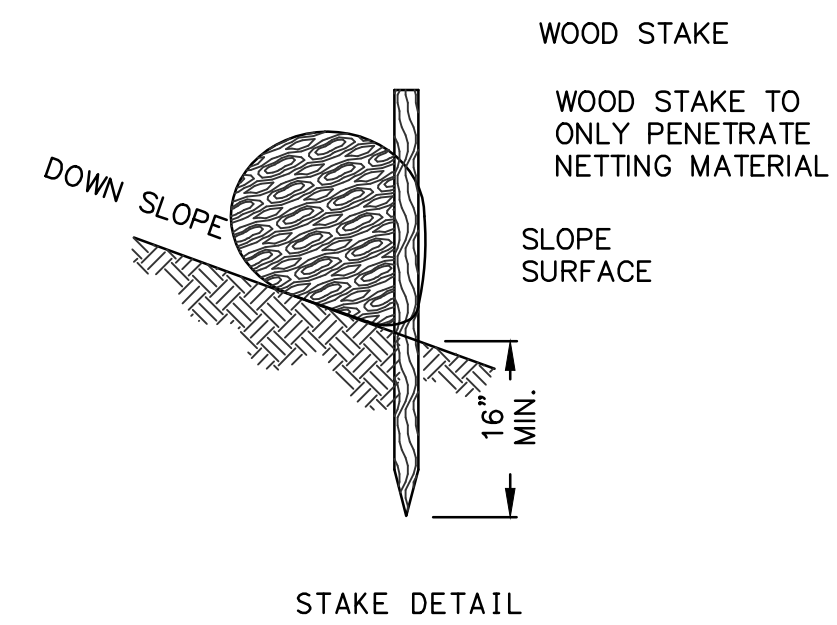


**MULCH FILTER BERM**

**SEDIMENT BARRIER FENCE**  
NOT TO SCALE

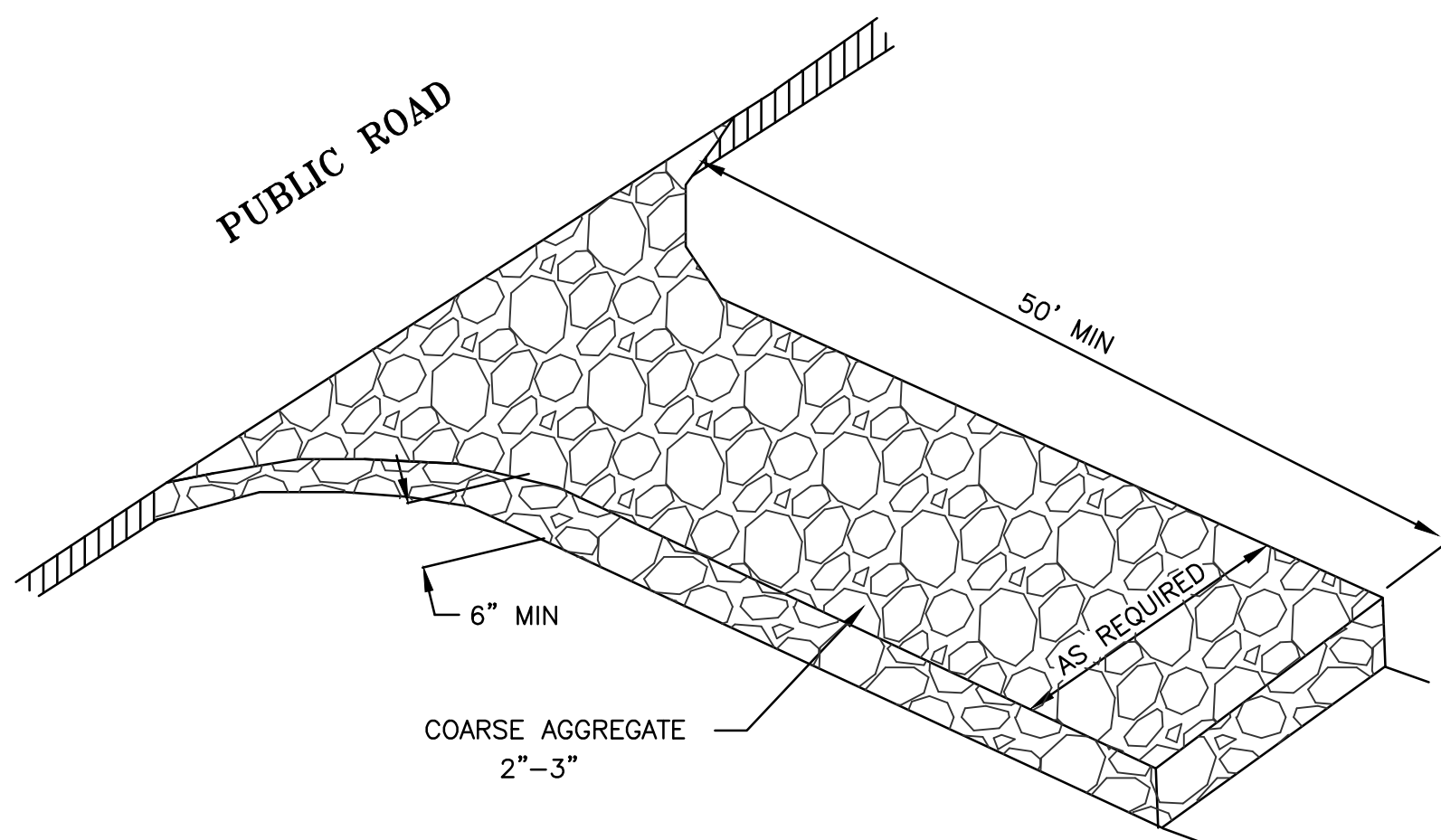


**SLOPE DETAIL**



**STAKE DETAIL**

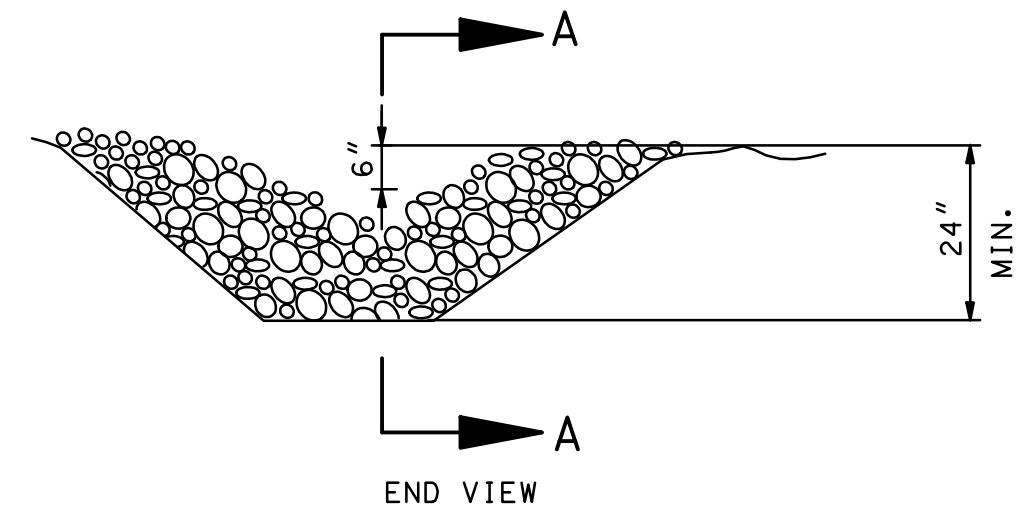
**STRAW WATTLES**  
NOT TO SCALE



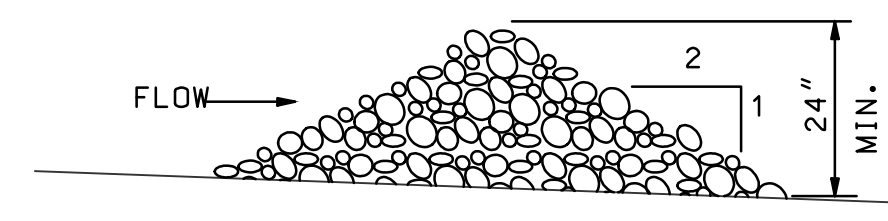
**CONSTRUCTION ENTRANCE NOTES**

- An aggregate construction entrance shall be constructed as shown on the plans.
- Aggregate size - Use 3" minus crushed limestone.
- Length - 50 feet minimum.
- Thickness - Not less than six (6) inches.
- Width - Twenty five (25) foot minimum, but not less than the full width at points where ingress or egress occurs.
- Filter Cloth - Shall be placed over the entire area prior to placing of stone.
- Surface Water - Construction entrance surface shall be graded to drain away from the entrance. Any surface water flowing or diverted toward construction entrances shall be piped across the entrance. If piping is impractical, a mountable berm with 3:1 slopes shall be permitted.
- Maintenance - The entrance shall be maintained in a condition which will prevent tracking or flowing of sediment onto public rights-of-way. This may require periodic top dressing with additional stone as conditions demand and repair and/or cleanout of any measures used to trap sediment. All sediment spilled, dropped, washed or tracked onto public rights-of-way must be removed immediately.
- Washing - Wheels shall be cleaned to remove sediment prior to entrance onto public rights-of-way. When washing is required, it shall be done on an area stabilized with stone and which drains into an approved sediment trapping device.
- Periodic inspection as needed maintenance shall be provided after each rain.

**AGGREGATE CONSTRUCTION ENTRANCE**  
NOT TO SCALE



**END VIEW**



**SECTION A-A**

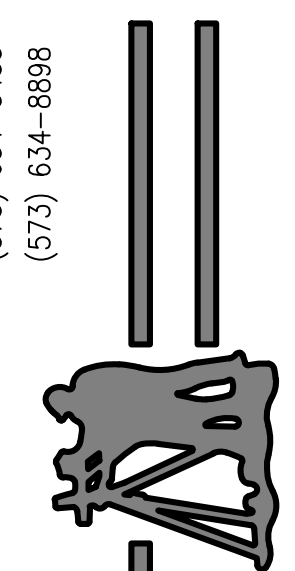
**ROCK DITCH CHECK**  
NOT TO SCALE

PRINTS ISSUED

3/4/19

REVISIONS:

Central Missouri Professional Services, Inc.  
 ENGINEERING - SURVEYING - MATERIALS TESTING  
 2500 E. McCARTY  
 JEFFERSON CITY, MISSOURI 65101  
 (573) 634-3455  
 (573) 634-8898



Paul Samson, PE - Engineer  
 MO# PE-2002016730

**RAILROAD SPUR EXTENSION  
 TO SERVE MORRIS PACKAGING  
 COLE COUNTY PUBLIC WORKS**

ALGOA ROAD  
 JEFFERSON CITY, COLE COUNTY, MISSOURI

CMPS JOB No. 92-057

DRN. BY: P.L.S. CKD. BY: P.L.S.

SCALE: 1"=30'

SHEET TITLE

**EROSION CONTROL  
 DETAILS**

SHEET NUMBER

**14**

OF 14 SHEETS