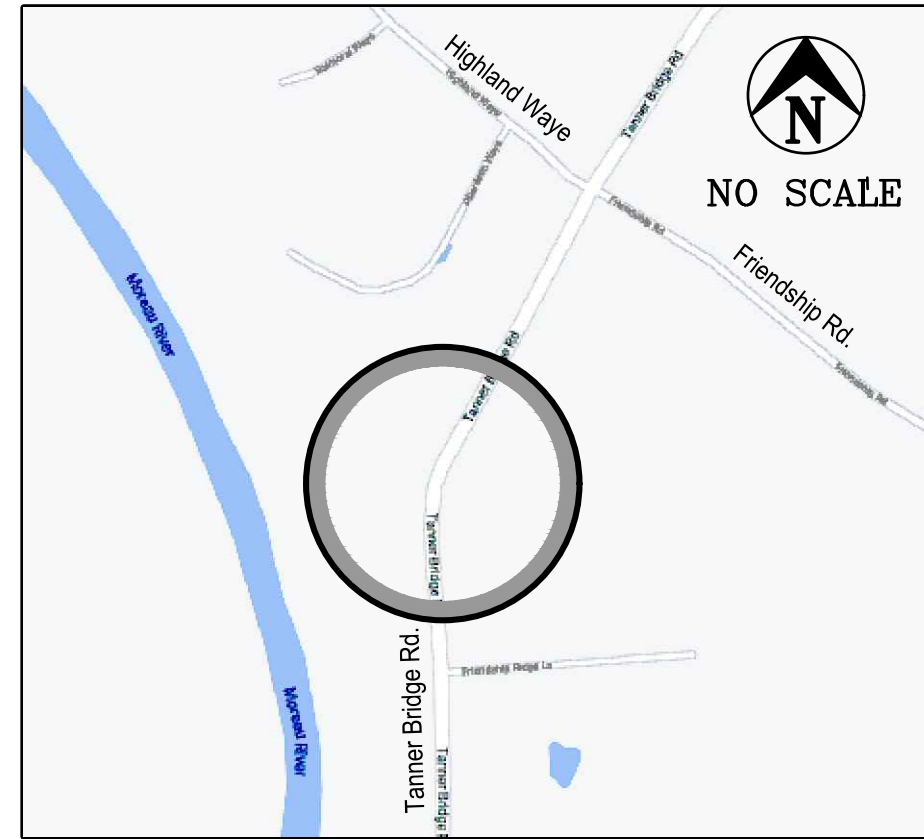


TANNER BRIDGE ROAD ALIGNMENT IMPROVEMENTS

NW 1/4 and SW 1/4 SEC. 1, T43N, R12W
COLE COUNTY, MISSOURI



SITE LOCATION MAP

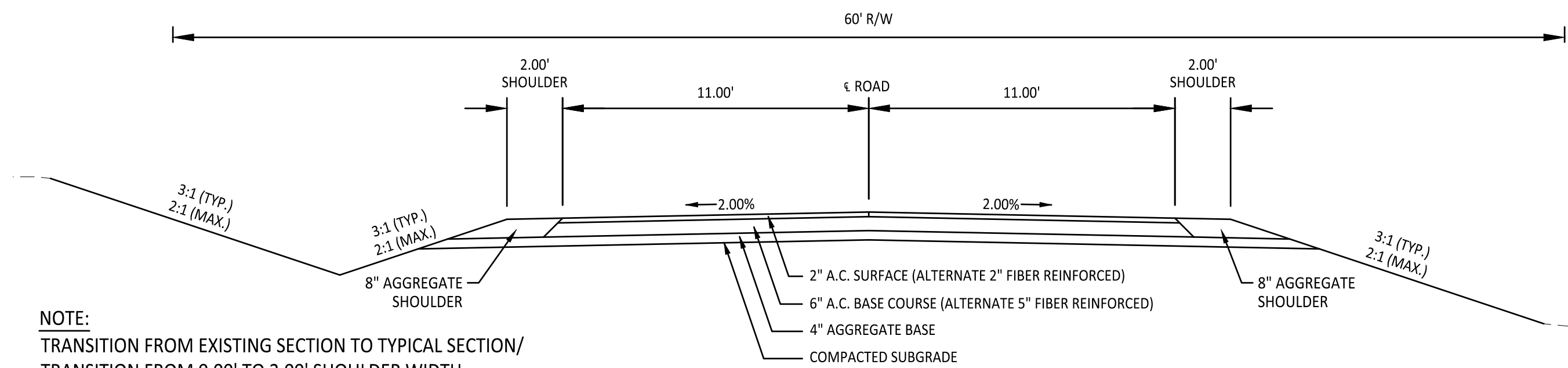
BEARING BASE: GPS TIES TO MISSOURI STATE PLANE COORDINATE SYSTEM, CENTRAL ZONE, NAD83
VERTICAL DATUM: CITY OF JEFFERSON AND COUNTY OF COLE VERTICAL DATUM SYSTEM NAVD 1988

UTILITY COMPANIES
PWSD #2: CENTURYLINK; THREE RIVERS ELEC. COOP.; SUDDENLINK COMMUNICATIONS;
WATER: FIBER OPTIC, TELEPHONE, TV; ELECTRIC: FIBER OPTIC, TV

SHEET INDEX

- 1 COVER SHEET
- 2 RIGHT OF WAY PLAN
- 3 TABULATIONS OF QUANTITIES
- 4 REMOVALS
- 5 PLAN & PROFILE
- 6 ENTRANCE PROFILES
- 7 STORM PROFILES & DETAILS
- 8 EROSION CONTROL PLANS
- 9 EROSION CONTROL DETAILS
- 10 TRAFFIC CONTROL PLANS
- 11 HIGHLAND WAY INTERSECTION (BY OTHERS)
- 1-13 CROSS SECTIONS

Control Point / Benchmark Table				
Point #	Elevation	Northing	Easting	Description
4000	725.78	971763.08	1724371.38	RP
4001	746.80	972982.06	1724633.16	RP
4002	740.57	972282.81	1724374.44	RP



NOTE:
TRANSITION FROM EXISTING SECTION TO TYPICAL SECTION/
TRANSITION FROM 0.00' TO 2.00' SHOULDER WIDTH
STA. 0+48.41 TO STA. 1+98.41

SUPERELEVATION FROM STATION 1+98.41 TO 9+37.88
SEE SHEET 8 OF 8 FOR DETAILS

TRANSITION FROM TYPICAL SECTION TO EXISTING SECTION/
TRANSITION FROM 2.00' TO 0.00' SHOULDER WIDTH
STA. 9+37.88 TO STA. 10+87.88

TYPICAL PAVEMENT SECTION

TANNER BRIDGE ROAD
STA. 0+48.41 TO STA. 10+87.89 - TANNER BRIDGE ROAD
NO SCALE



UTILITY STATEMENT:
THE UNDERGROUND UTILITIES SHOWN HAVE BEEN LOCATED FROM VISIBLE FIELD SURVEY INFORMATION AND MISSOURI ONE-CALL MARKINGS IN PUBLIC RIGHT-OF-WAYS. THE SURVEYOR MAKES NO GUARANTEE THAT THE UNDERGROUND UTILITIES SHOWN COMPRISE ALL SUCH UTILITIES IN THE AREA, EITHER IN SERVICE OR ABANDONED. THE SURVEYOR FURTHER DOES NOT WARRANT THAT THE UNDERGROUND UTILITIES SHOWN ARE IN THE EXACT LOCATION INDICATED, ALTHOUGH HE DOES CERTIFY THAT THEY ARE LOCATED AS ACCURATELY AS POSSIBLE FROM INFORMATION AVAILABLE AND ONE-CALL MARKINGS. WHERE UTILITY ELEVATIONS ARE SHOWN ON THE PLANS, THE SURVEYOR HAS PHYSICALLY LOCATED THE UNDERGROUND UTILITIES.

LEGEND

EXISTING (Light or Dashed)	-----	TEL. PEDESTAL	-----	MAIL BOX	-----
PROPOSED (Heavy or Solid)	=====	POWER POLE	-----	PROPERTY CORNER	-----
EASEMENT	-----	GUY WIRE	-----	TREE	-----
CENTERLINE	-----	WATER VALVE	-----	SANITARY MANHOLE	-----
APPROX. EXISTING PROPERTY LINE	-----	FIRE HYDRANT	-----	GAS VALVE	-----
SECTION LINE	-----	WATER METER	-----	LIGHT POLE	-----
FENCE	-----	STREET SIGN	-----	SATELLITE DISH	-----
ELECTRIC LINE	-----	ABBREVIATIONS:			
FIBER OPTIC LINE	-----	E-ELECTRIC, FO-FIBER OPTIC, G-GAS, S-SAN SEWER			
GAS LINE	-----	SC-SIGNAL CABLE, T-TELEPHONE, W-WATER			
SAN. SEWER LINE	-----	PL-PROPERTY, CL-CENTER, R/W-RIGHT OF WAY			
TELEPHONE LINE	-----	Ø-DIAMETER, R-RADIUS, (R)-REMOVALS			
WATER LINE	-----	UG-UNDERGROUND, O-OVERHEAD			

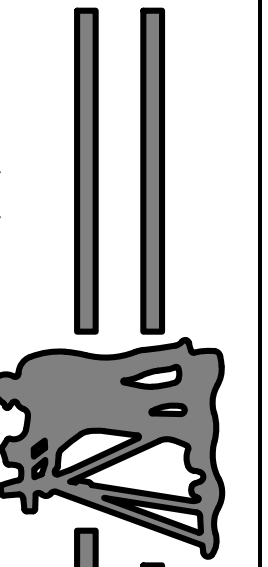
APPROVED BY: Date: 12/20/2021
Matthew Prenger, P.E.
County Engineer

PRINTS ISSUED

DECEMBER 16, 2021

REVISIONS:

Central Missouri Professional Services, Inc.
ENGINEERING - SURVEYING - MATERIALS TESTING
2500 E. MCCARTY
JEFFERSON CITY, MISSOURI 65101
(573) 634-9455
(573) 634-8898



12/16/2021

Patrick P. Kremer, PE - Engineer
MO# PE-2012018094

TANNER BRIDGE ROAD ALIGNMENT
IMPROVEMENTS, PROJECT # 2022-601-1
COLE COUNTY PUBLIC WORKS

TANNER BRIDGE ROAD
COLE COUNTY, MISSOURI

CMPS JOB No. 17-035

DRN. BY: PPK CKD. BY: CFB

SCALE:

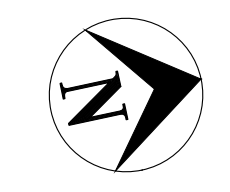
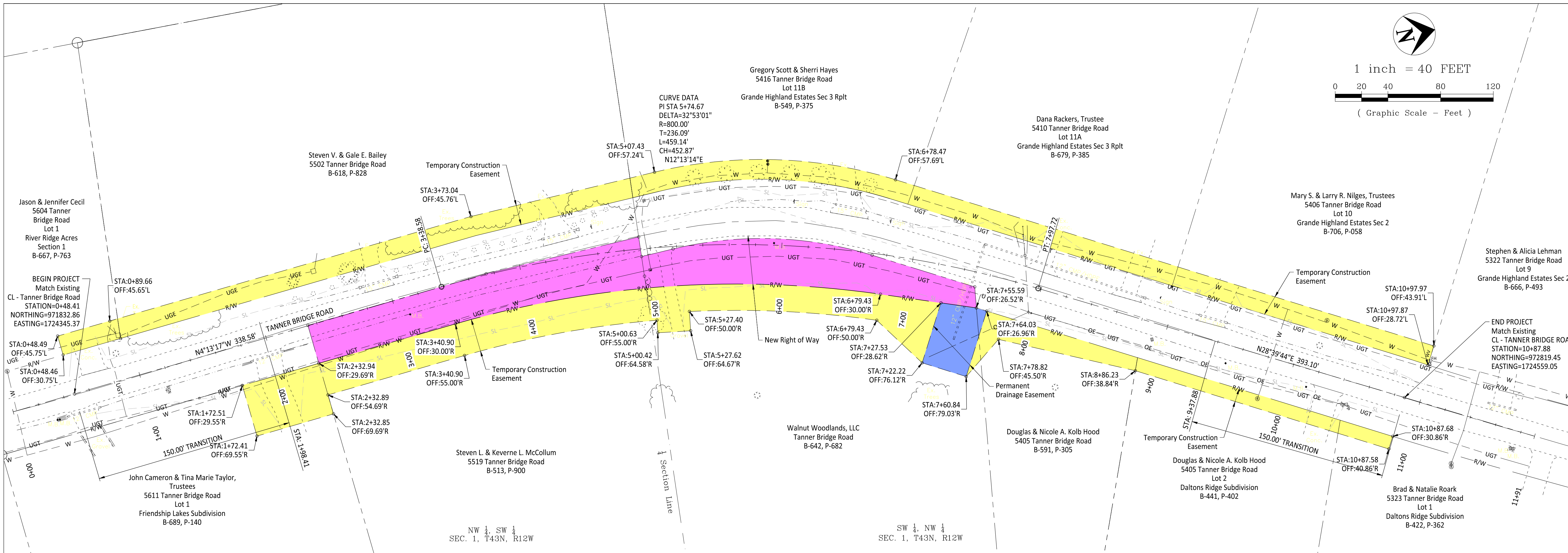
SHEET TITLE

COVER SHEET

SHEET NUMBER

1

OF 11 SHEETS



1 inch = 40 FEET
 0 20 40 80 120
 (Graphic Scale - Feet)

PRINTS ISSUED
 DECEMBER 16, 2021

REVISIONS:

Central Missouri Professional Services, Inc.
 ENGINEERING - SURVEYING - MATERIALS TESTING
 2500 E. McCARTY
 JEFFERSON CITY, MISSOURI 65101
 (573) 634-9455
 (573) 634-8898

12/16/2021
 Patrick P. Kremer, PE - Engineer
 MO# PE-2012018094

TANNER BRIDGE ROAD ALIGNMENT
 IMPROVEMENTS, PROJECT # 2022-601-1
 COLE COUNTY PUBLIC WORKS

TANNER BRIDGE ROAD
 COLE COUNTY, MISSOURI

CMPS JOB No. 17-035

DRN. BY: PPK CKD. BY: CFB

SCALE: 1"=40'

SHEET TITLE
RIGHT-OF-WAY PLAN

SHEET NUMBER
2
 OF 11 SHEETS

REMOVAL OF IMPROVEMENTS							
CL STATION	CL STATION	OFFSET	LOCATION	QUANTITY	UNIT	DESCRIPTION	REMARKS
0+48.41	TO 10+87.88		TANNER BRIDGE RD	2472	SY	VARIABLE WIDTH ASPHALT PAVEMENT	REMOVE
0+67.30		10.43' LT - 37.26' LT	TANNER BRIDGE RD	55.2	SY	CONCRETE DRIVEWAY	REMOVE
1+16.02		16.87' RT	TANNER BRIDGE RD	1.00	EA	RIGHT TURN WARNING SIGN	REMOVE AND RETAIN FOR COLE COUNTY
1+72.50	TO 5+00.00	32.79' RT - 42.63' LT	TANNER BRIDGE RD	327.50	LF	8" WATER MAIN/40' YELOMINE PIPE AND CASING	REMOVE AND RELOCATE 40' OF 8" YELOMINE PIPE AND 14" STEEL CASING
1+76.71	TO 1+84.58	14.62' RT - 14.45' RT	TANNER BRIDGE RD	7.87	LF	TIE WALL	REMOVE
1+83.73	TO 2+10.42	14.02' RT - 13.18' RT	TANNER BRIDGE RD	26.69	LF	12" CMP	REMOVE
2+10.22	TO 2+17.89	13.20' RT - 13.45' RT	TANNER BRIDGE RD	7.67	LF	TIE WALL	REMOVE
2+29.00	TO 2+74.42	22.60' LT - 23.60' LT	TANNER BRIDGE RD	4	EA	DECORATIVE ROCK/GUARD RAIL	REMOVE AND REPLACE AS NEEDED
2+78.45	TO 3+09.05	16.74' LT - 17.04' LT	TANNER BRIDGE RD	30.59	LF	15" CMP AND FLARED END SECTIONS	REMOVE
2+91.85		11.72' LT - 29.20' LT	TANNER BRIDGE RD	33.3	SY	CONCRETE DRIVEWAY	REMOVE
3+09.28	TO 4+16.48	21.43' LT - 26.17' LT	TANNER BRIDGE RD	11	EA	DECORATIVE ROCK/GUARD RAIL	REMOVE AND REPLAE AS NEEDED
3+09.93		13.45' RT	TANNER BRIDGE RD	1	EA	1 MAILBOX	REMOVE AND RESET
4+19.96	TO 4+48.67	17.50' LT - 20.41' LT	TANNER BRIDGE RD	28.71	LF	15" CMP AND FLARED END SECTIONS	REMOVE
4+33.99		13.17' LT - 40.72' LT	TANNER BRIDGE RD	53.67	SY	CONCRETE DRIVEWAY	REMOVE
4+45.71	TO 4+70.14	24.32' LT - 32.56' LT	TANNER BRIDGE RD	4	EA	DECORATIVE ROCK/GUARD RAIL	REMOVE AND REPLACE AS NEEDED
4+57.43		21.04' LT	TANNER BRIDGE RD	1	EA	CHEVRON SIGN	REMOVE AND RETAIN FOR COLE COUNTY
5+93.99		1.56' LT	TANNER BRIDGE RD	1	EA	1 MAILBOX	REMOVE AND RESET
6+07.19		33.87' LT	TANNER BRIDGE RD	1	EA	CHEVRON SIGN	REMOVE AND RETAIN FOR COLE COUNTY
6+37.70	TO 6+60.70	34.01' LT - 31.19' LT	TANNER BRIDGE RD	23	LF	15" CMP	REMOVE
6+49.19		26.20' LT - 42.79' LT	TANNER BRIDGE RD	40.4	SY	CONCRETE DRIVEWAY	REMOVE
6+78.96		26.07' LT	TANNER BRIDGE RD	1	EA	CHEVRON SIGN	REMOVE AND RETAIN FOR COLE COUNTY
7+43.64	TO 7+50.45	53.71' RT - 21.44' LT	TANNER BRIDGE RD	75.44	LF	12" CMP/HDPE	REMOVE
7+50.40	TO 8+78.19	22.09' LT - 16.18' LT	TANNER BRIDGE RD	127.79	LF	12" CMP/HDPE AND FLARED END SECTION	REMOVE
7+96.60		12.85' LT - 43.69' RT	TANNER BRIDGE RD	46.34	SY	CONCRETE DRIVEWAY	REMOVE
8+64.36		11.90' LT - 29.99' LT	TANNER BRIDGE RD	29.13	SY	CONCRETE DRIVEWAY	REMOVE
8+88.52		19.88' LT	TANNER BRIDGE RD	1.00	EA	LEFT TURN WARNING SIGN	REMOVE AND RETAIN FOR COLE COUNTY
8+91.62		12.52' RT	TANNER BRIDGE RD	1	EA	1 MAILBOX	REMOVE AND RESET
9+20.43	TO 9+42.89	15.66' LT - 15.81' LT	TANNER BRIDGE RD	22.46	LF	15" CMP	REMOVE
9+32.17		11.48' LT - 39.83' LT	TANNER BRIDGE RD	51.47	SY	CONCRETE DRIVEWAY	REMOVE
9+50.25		13.85' RT	TANNER BRIDGE RD	1	EA	1 MAILBOX	REMOVE AND RESET
10+15.00		19.50' LT	TANNER BRIDGE RD	1	EA	30" OAK TREE	REMOVE
10+13.94		13.60' RT	TANNER BRIDGE RD	1	EA	1 MAILBOX	REMOVE AND RESET
10+31.18		10.39' RT - 39.99' RT	TANNER BRIDGE RD	60.68	SY	CONCRETE DRIVEWAY	REMOVE
BID QUANTITY				1	LUMP SUM		

ENTRANCES										
STATION	LOCATION	OFFSET	LENGTH (FT)	WIDTH (FT)	6" ASPHALT APPROACH (SY)	2" TYPE 1 AGGR. BASE (SY)	4" TYPE 1 AGGR. BASE (SY)	4" OF 2" AGGR. BASE (SY)	6" CONCRETE DRIVE (SY)	REMARKS
0+51.07	TANNER BRIDGE RD	RT	11.20	VARIES (17.17 TO 15.96)	6.43	17.22				
0+67.30	TANNER BRIDGE RD	LT	26.84	18.14					57.17	
1+96.95	TANNER BRIDGE RD	RT	54.00	VARIES (18.89 TO 17.58)	6.97		105.06	105.06		
2+91.85	TANNER BRIDGE RD	LT	18.22	VARIES (22.73 TO 11.74)					36.02	
4+33.99	TANNER BRIDGE RD	LT	30.46	VARIES (28.50 TO 12.13)					60.57	
5+12.22	TANNER BRIDGE RD	RT	49.00	VARIES (10.00 TO 8.85)	4.00		49.23	49.23		
6+49.19	TANNER BRIDGE RD	LT	32.08	VARIES (20.00 TO 17.89)					72.53	
7+96.60	TANNER BRIDGE RD	LT	32.70	VARIES (25.86 TO 11.92)					56.56	
8+64.36	TANNER BRIDGE RD	LT	19.00	VARIES (22.14 TO 12.10)					35	
9+32.17	TANNER BRIDGE RD	LT	29.00	VARIES (25.50 TO 15.34)					53.25	
10+31.18	TANNER BRIDGE RD	RT	29.00	VARIES (28.13 TO 17.93)					62	
BID QUANTITY (SY)					17.4	17.2	154.3	154.3	433.1	

STORM DRAINAGE PIPES AND STRUCTURES								
STRUCTURE NO.	STATION TO STATION	LOCATION	ALUMINIZED CORRUGATED METAL PIPE 16 GA. (LF)	ALUMINIZED METAL END SECTION (EA)	CL III REINFORCED CONCRETE PIPE 15" (LF)	REIN. CONC. F.E.S. (EA)	CITY OF JEFFERSON GRATE INLET WITH NEENAH R-4884-A GRATE (EA)	REMARKS
C-1	1+84.38 RT. TO 2+10.22 RT.	TANNER BRIDGE ROAD	25.84	2			3.00' x 3.00'	
C-2	4+18.84 LT. TO 4+47.91 LT.	TANNER BRIDGE ROAD	29.78	2				
C-3	2+81.38 LT. TO 3+04.71 LT.	TANNER BRIDGE ROAD	23.34	2				
C-4	9+20.69 LT. TO 9+43.89 LT.	TANNER BRIDGE ROAD	23.21	2				
C-5	7+51.93 LT. TO 8+76.49 LT.	TANNER BRIDGE ROAD	132.27	1				
C-6	7+50.00 LT. TO 7+43.91 RT.	TANNER BRIDGE ROAD			77.83	1		
I-1	7+50.00 LT.	TANNER BRIDGE ROAD					1	
BID QUANTITY			234.4	9.0	77.8	1	1	

4" TYPE 5 AGGREGATE BASE					
STATION TO STATION	LOCATION	LENGTH (FT)	WIDTH (FT)	4" TYPE 5 AGGR. BASE (SY)	REMARKS
0+48.41	1+98.41	TANNER BRIDGE RD	150.00	30.99	516.50
1+98.41	9+37.88	TANNER BRIDGE RD	739.47	31.15	2,559.39
9+37.88	10+87.88	TANNER BRIDGE RD	150.00	30.57	509.50
BID QUANTITY (SY)				3,585.4	

8" AGGREGATE SHOULDERS					
STATION TO STATION	LOCATION	LENGTH (FT)	WIDTH (FT)	8" AGGR. SHOULDER (SY)	REMARKS
0+48.41	1+98.41	TANNER BRIDGE RD - LT	150	1.35	22.42 TAPER 0 TO 2.69'
0+48.41	1+86.74	TANNER BRIDGE RD - RT	138.33	1.20	18.49 TAPER 0 TO 2.41'
1+98.41	2+81.76	TANNER BRIDGE RD - LT	83.35	2.69	24.91
2+07.06	5+06.47	TANNER BRIDGE RD - RT	299.41	2.69	89.49
3+04.49	4+20.51	TANNER BRIDGE RD - LT	116.02	2.69	34.68
4+48.70	6+34.52	TANNER BRIDGE RD - LT	185.82	2.69	55.54
5+17.98	9+37.88	TANNER BRIDGE RD - RT	419.90	2.69	125.50
6+63.86	7+83.30	TANNER BRIDGE RD - LT	119.44	2.69	35.70
8+08.96	8+53.14	TANNER BRIDGE RD - LT	44.18	2.69	13.20
8+75.28	9+19.13	TANNER BRIDGE RD - LT	43.85	2.69	13.11
9+37.88	10+87.88	TANNER BRIDGE RD - RT	150.00	1.35	22.42 TAPER 2.69 TO 0
9+44.66	10+87.88	TANNER BRIDGE RD - LT	143.22	1.29	20.45 TAPER 2.57 TO 0
BID QUANTITY (SY)				475.9	

PAVEMENT MARKING					
STATION TO STATION		LOCATION	ACRYLIC WATERBORNE PAINT		REMARKS
			4" SOLID WHITE (LF)	4" SOLID YELLOW (LF)	
0+48.41	10+87.88	TANNER BRIDGE ROAD	C/L	2079	DOUBLE SOLID YELLOW
0+48.41	10+87.88	TANNER BRIDGE ROAD	RT	2079	EDGE LINE
0+48.41	10+87.88	TANNER BRIDGE ROAD	LT	2079	EDGE LINE
BID QUANTITY			4158	2079	

SEEDING, FERTILIZING & MULCH					
STATION TO STATION		LOCATION	SEED & MULCH (AC)	TEMP. SEED & MULCH (AC)	REMARKS
0+41	0+58	TANNER BRIDGE RD	LT.	0.003	0.00
0+60	1+91	TANNER BRIDGE RD	RT.	0.05	0.00
0+76	2+87	TANNER BRIDGE RD	LT.	0.04	0.00
2+06	5+12	TANNER BRIDGE RD	RT.	0.19	0.02
2+98	4+25	TANNER BRIDGE RD	LT.	0.03	0.00
4+33	6+40	TANNER BRIDGE RD	LT.	0.12	0.01
5+18	10+22	TANNER BRIDGE RD	RT.	0.13	0.01
6+55	7+92	TANNER BRIDGE RD	IT.	0.07	0.01
8+03	8+59	TANNER BRIDGE RD	LT.	0.03	0.00
8+71	9+27	TANNER BRIDGE RD	LT.	0.02	0.00
9+42	10+95	TANNER BRIDGE RD	LT.	0.05	0.01
10+40	10+88	TANNER BRIDGE RD	RT.	0.01	0.00
BID QUANTITY			0.74	0.07	

EARTHWORK			
LOCATION	EXCAVATION (CY)	FILL (CY)	REMARKS
TANNER BRIDGE RD	3,420	323	THE EARTHWORK QUANTITIES SHOWN ARE RAW VOLUMES FROM CROSS SECTION CALCULATIONS AND SHOULD BE CONSIDERED FOR INFORMATIONAL PURPOSES ONLY. VOLUMES ARE CALCULATED FROM EXISTING GRADES TO PROPOSED SUBGRADE. THE CONTRACTOR SHALL BE RESPONSIBLE FOR INCLUDING ANY ADJUSTMENTS NECESSARY TO ACCOUNT FOR PAVEMENT REMOVALS, ADDITIONAL EARTHWORK FOR ENTRANCES, CONSTRUCTION PHASING, OR OTHER EARTHWORK NECESSARY TO COMPLETE THE PROJECT.
TOTAL	3,420	323	
BID QUANTITY		1 LUMP SUM	

WATER MAIN RELOCATION (MATERIALS SUPPLIED BY PWSD #2)					
STATION TO STATION	LOCATION	OFFSET	8" PVC WATER MAIN (LF)	CLASS III EXCAVATION (CY)	REMARKS
1+72.50	5+00.00	TANNER BRIDGE ROAD	32.79' RT. TO 42.63' LT.	290	115 40' of 8" Yelomine Pipe and 14" Steel Casing to be Removed and Relocated. Include 6" Thick Lime Screening for Bedding Material.
BID QUANTITY			290	115	

DITCH LINERS						
STATION TO STATION	OFFSET	LOCATION	LENGTH (FT)	WIDTH (FT)	MODOT TYPE 2 ROCK DITCH LINER (CY)	REMARKS
7+43.91	7+41.95	50.71' RT. TO 72.80' RT.	TANNER BRIDGE ROAD	RT.	20.00	14.81 2.00' DEPTH
BID QUANTITY					14.8	

BITUMINOUS PAVEMENT								
STATION TO STATION		LOCATION	LENGTH (FT)	2" BITUMINOUS PAVEMENT WIDTH (FT)	2" BITUMINOUS PAVEMENT AREA (SY)	6" BITUMINOUS BASE WIDTH (FT)	6" BITUMINOUS BASE AREA (SY)	REMARKS
0+48.41	1+98.41	TANNER BRIDGE RD	150.00	22.00	366.67	22.68	378.00	PAVEMENT TRANSITION 21.67' TO 22.00'
1+98.41	9+37.88	TANNER BRIDGE RD	739.47	22.17	1821.56	22.84	1876.61	
9+37.88	10+87.88	TANNER BRIDGE RD	150.00	21.59	359.83	22.26	371.00	PAVEMENT TRANSITION 22.00' TO 20.84'
BID QUANTITY				2548.1	2625.6			

ALTERNATE BID - FIBER REINFORCED BITUMINOUS PAVEMENT								
STATION TO STATION		LOCATION	LENGTH (FT)	2" FIBER REINFORCED BITUMINOUS PAVEMENT WIDTH (FT)	2" FIBER REINFORCED BITUMINOUS PAVEMENT AREA (SY)	5" FIBER REINFORCED BITUMINOUS BASE WIDTH (FT)	5" FIBER REINFORCED BITUMINOUS BASE AREA (SY)	REMARKS
0+48.41	1+98.41	TANNER BRIDGE RD	150.00	22.00	366.67	22.68	378.00	PAVEMENT TRANSITION 21.67' TO 22.00'
1+98.41	9+37.88	TANNER BRIDGE RD	739.47	22.17	1821.56	22.84	1876.61	
9+37.88	10+87.88	TANNER BRIDGE RD	150.00	21.59	359.83	22.26	371.00	PAVEMENT TRANSITION 22.00' TO 20.84'
BID QUANTITY				2548.1	2625.6			

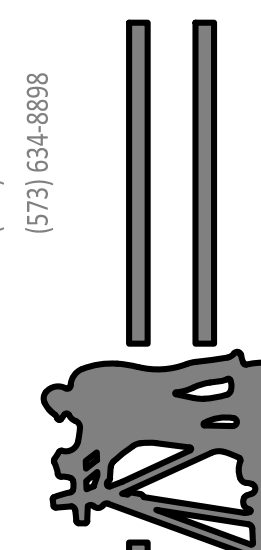
LUMP SUM ITEMS	
ITEM	QUANTITY (LS)
MOBILIZATION	1
CONSTRUCTION PHASING & TRAFFIC CONTROL	1
EROSION CONTROL	1

PRINTS ISSUED

DECEMBER 16, 2021

REVISIONS:

Central Missouri Professional Services, Inc.
ENGINEERING - SURVEYING - MATERIALS TESTING
2500 E. MCCARTY
JEFFERSON CITY, MISSOURI 65101
(573) 634-9455
(573) 634-8888



12/16/2021
Patrick P. Kremer, PE - Engineer
MO# PE-2012018094

TANNER BRIDGE ROAD ALIGNMENT IMPROVEMENTS, PROJECT # 2022-601-1
COLE COUNTY PUBLIC WORKS
TANNER BRIDGE ROAD
COLE COUNTY, MISSOURI

CMPS JOB No. 17-035

DRN. BY: PPK CKD. BY: CFB

SCALE: 1"=20'

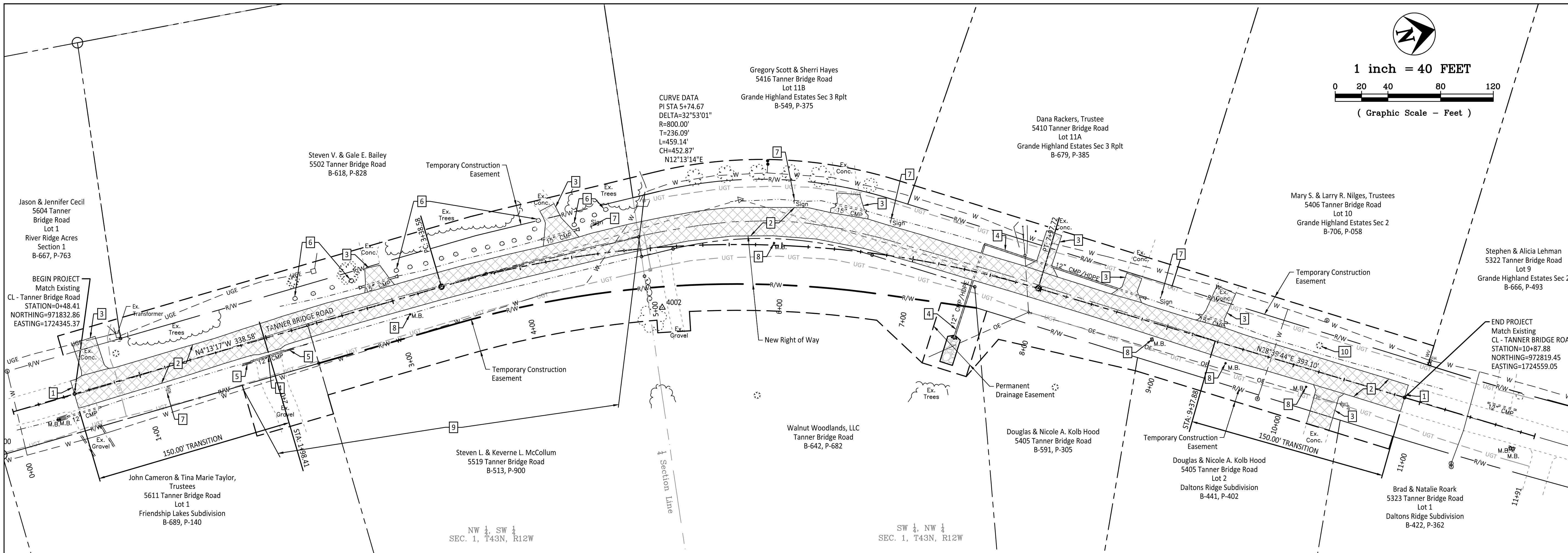
SHEET TITLE

TABULATION OF QUANTITIES

SHEET NUMBER

3

OF 11 SHEETS



PRINTS ISSUED
 DECEMBER 16, 2021
 REVISIONS:

Central Missouri Professional Services, Inc.
 ENGINEERING - SURVEYING - MATERIALS TESTING
 2500 E. MCCARTY
 JEFFERSON CITY, MISSOURI 65101
 (573) 634-9455
 (573) 634-8898

Central Missouri Professional Services, Inc.
 Missouri State Certificate of Authority #001558

STATE OF MISSOURI
 PATRICK P. KREMER
 PROFESSIONAL ENGINEER
 EXPIRES 12/31/2024
 PE-2012018094

12/16/2021
 Patrick P. Kremer, PE - Engineer
 MO# PE-2012018094

- REMOVAL NOTES:
- 1 SAW CUT LINE
 - 2 REMOVE ASPHALT PAVEMENT
 - 3 REMOVE CONCRETE DRIVEWAY
 - 4 REMOVE PIPE AND FLARED END SECTIONS
 - 5 REMOVE TIE WALL
 - 6 REMOVE AND REPLACE DECORATIVE ROCK - TYP. ALL
 - 7 REMOVE SIGN
 - 8 REMOVE AND RESET MAILBOXES
 - 9 REMOVE AND REPLACE WATER MAIN. PWSD #2 WILL SUPPLY MATERIALS. 40.00' OF 8" YELOMINE PIPE AND 14" STEEL CASING SHALL BE REMOVED AND RELOCATED AS PER PWSD #2.
 - 10 REMOVE TREE

TANNER BRIDGE ROAD ALIGNMENT IMPROVEMENTS, PROJECT # 2022-601-1
COLE COUNTY PUBLIC WORKS

TANNER BRIDGE ROAD
 COLE COUNTY, MISSOURI

CMPS JOB No. 17-035

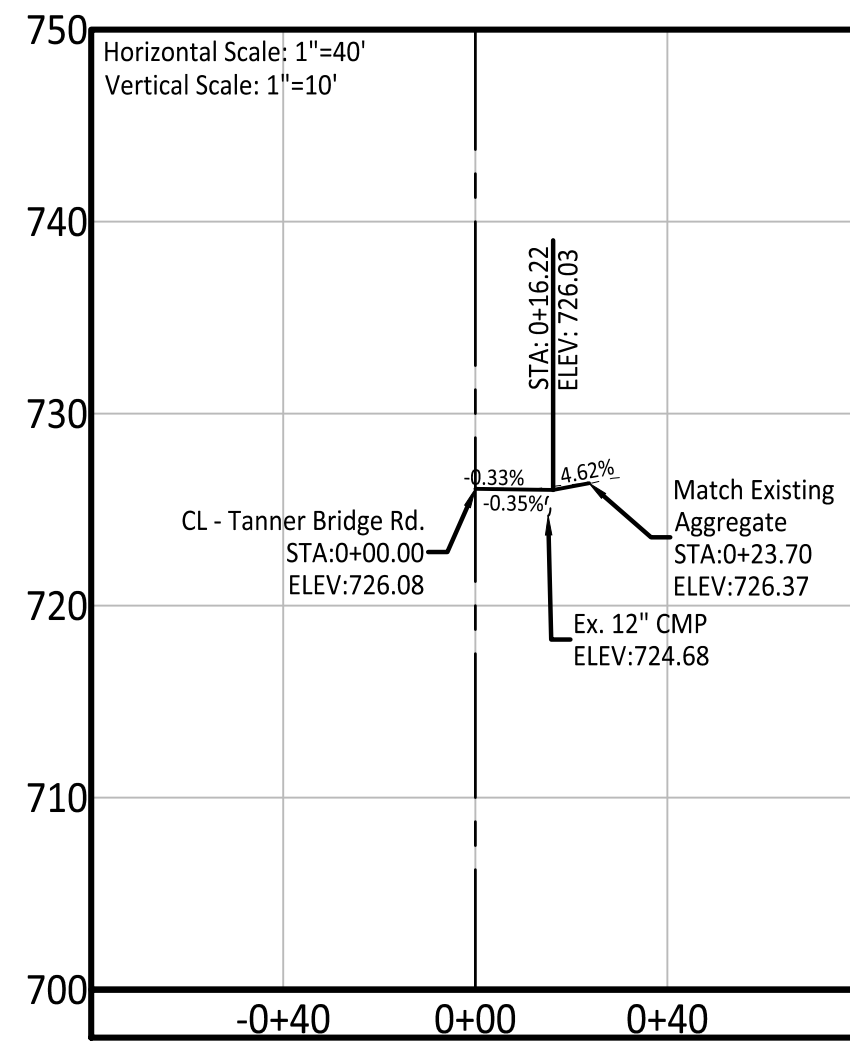
DRN. BY: PPK CKD. BY: CFB

SCALE: 1"=40'

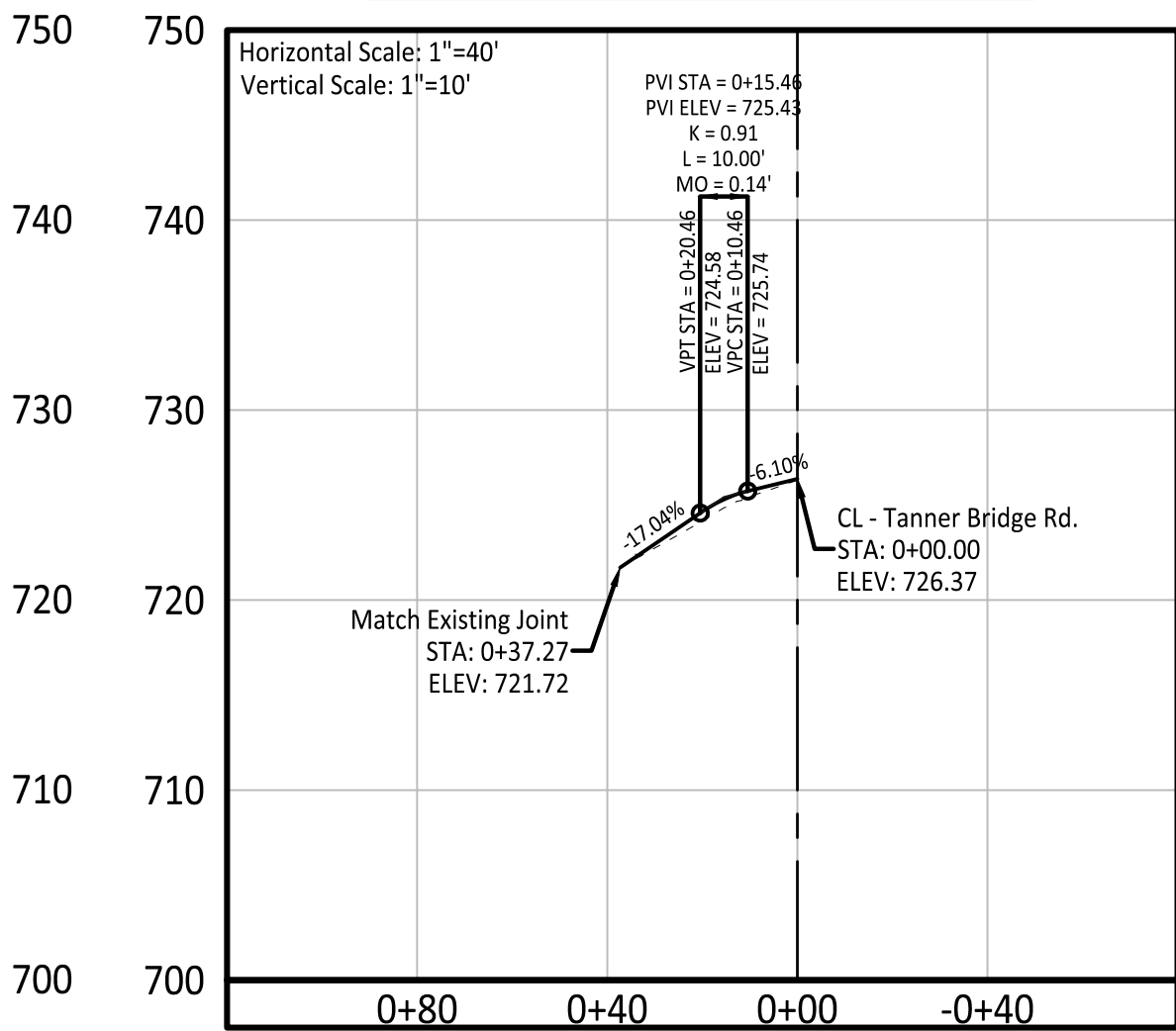
SHEET TITLE
REMOVALS

SHEET NUMBER
4
 OF 11 SHEETS

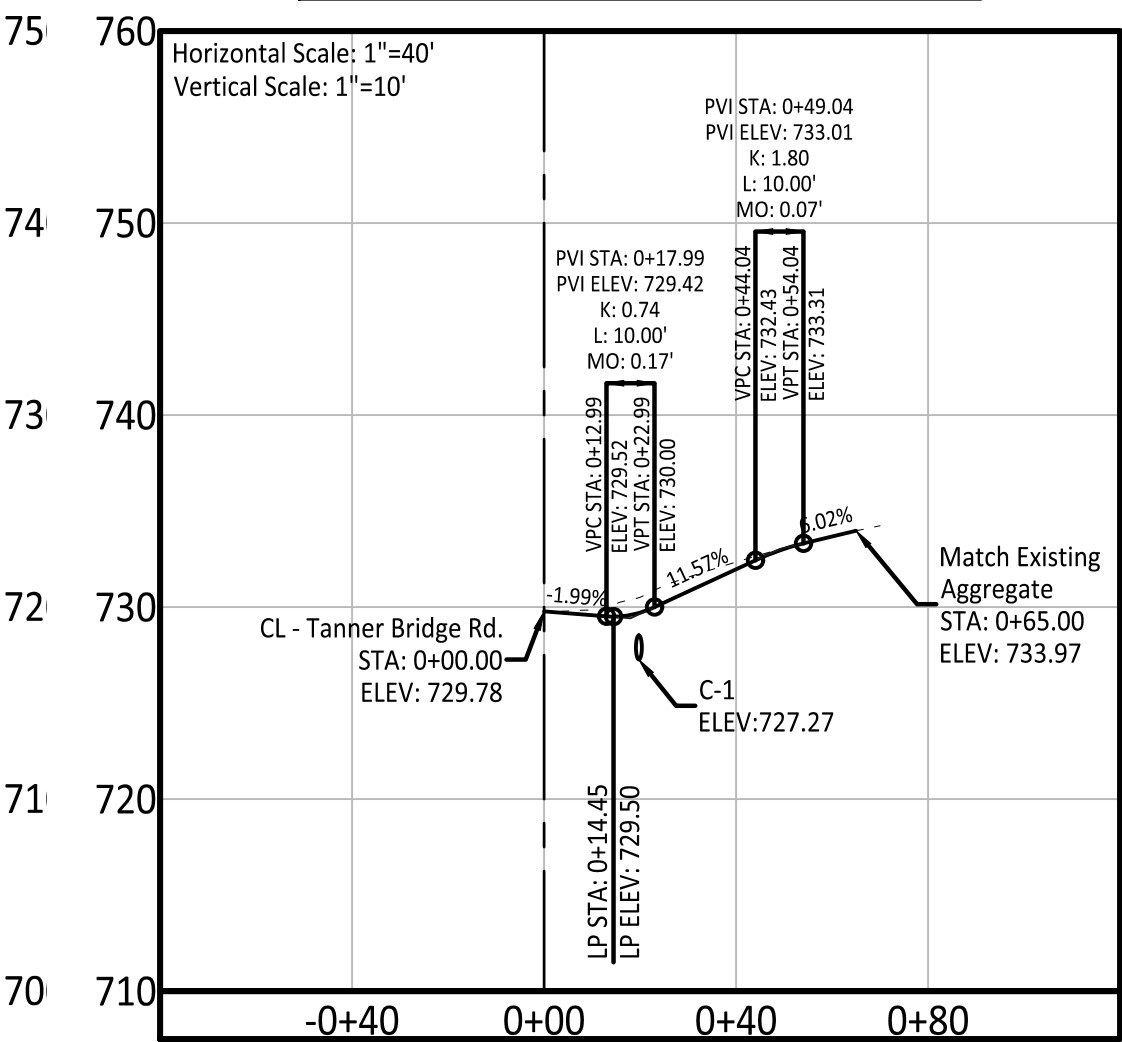
Driveway - 0+51.07 - Rt.



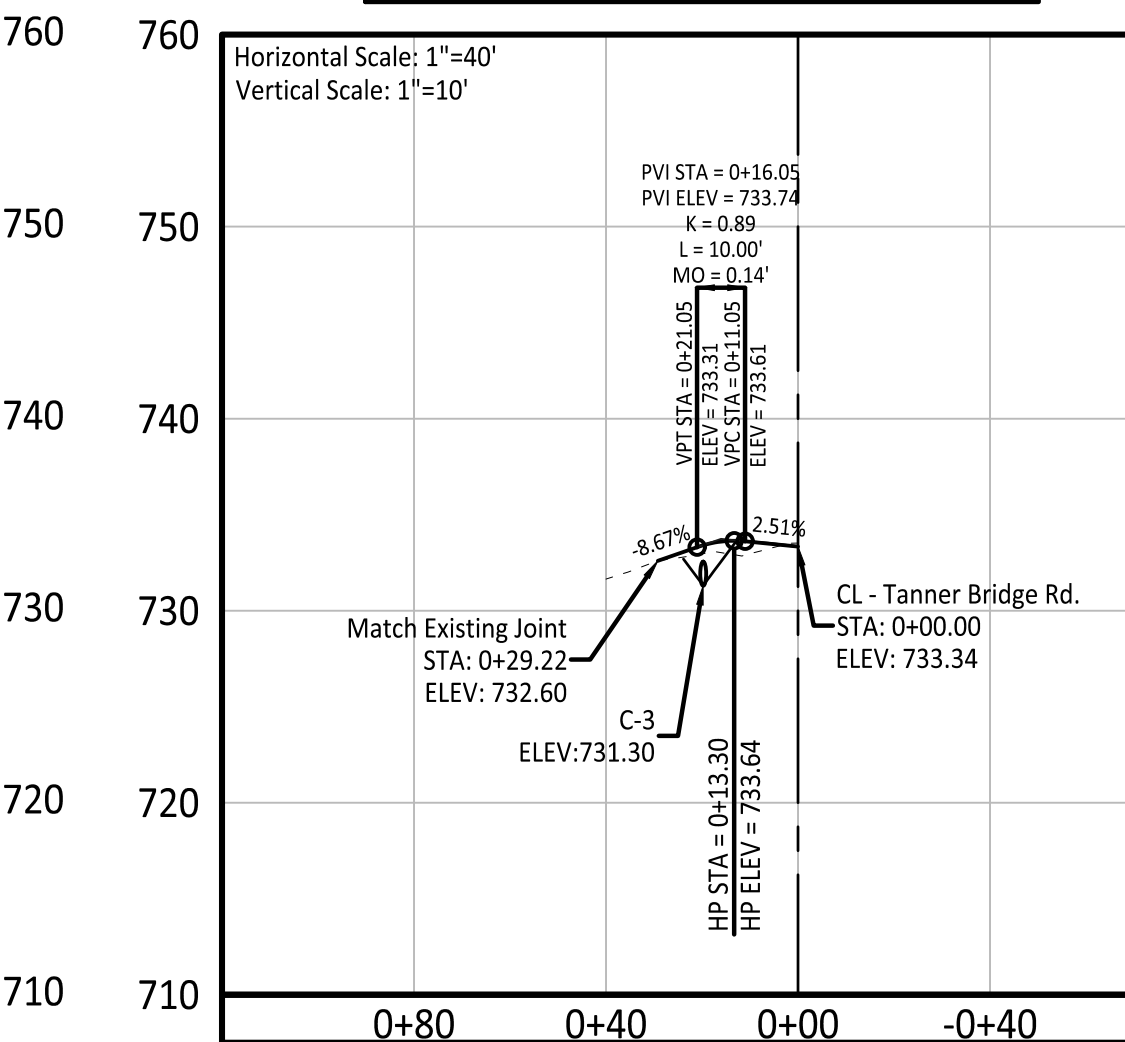
Driveway - 0+67.30 - Lt.



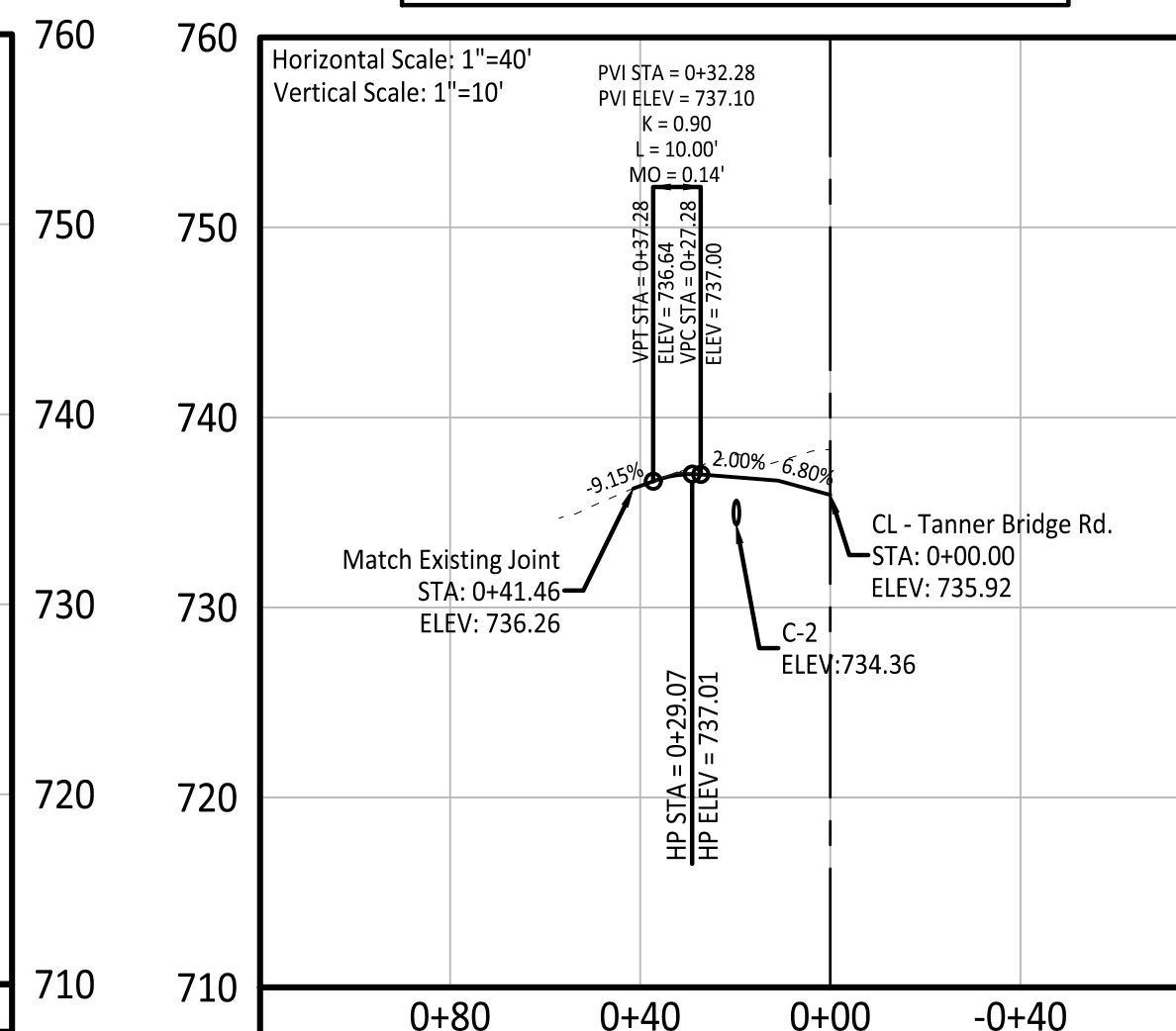
Driveway - 1+96.95 - Rt.



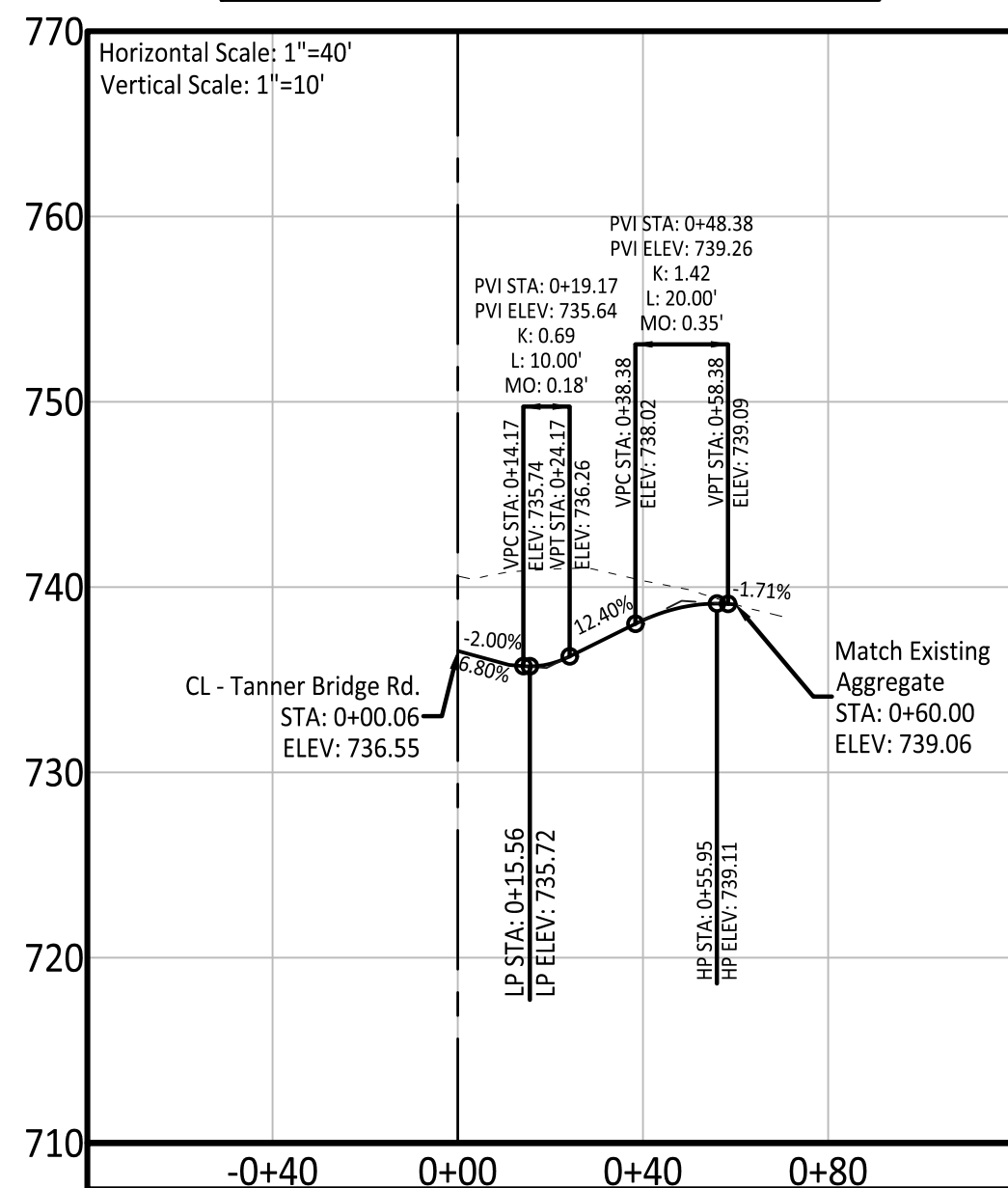
Driveway - 2+91.85 - Lt.



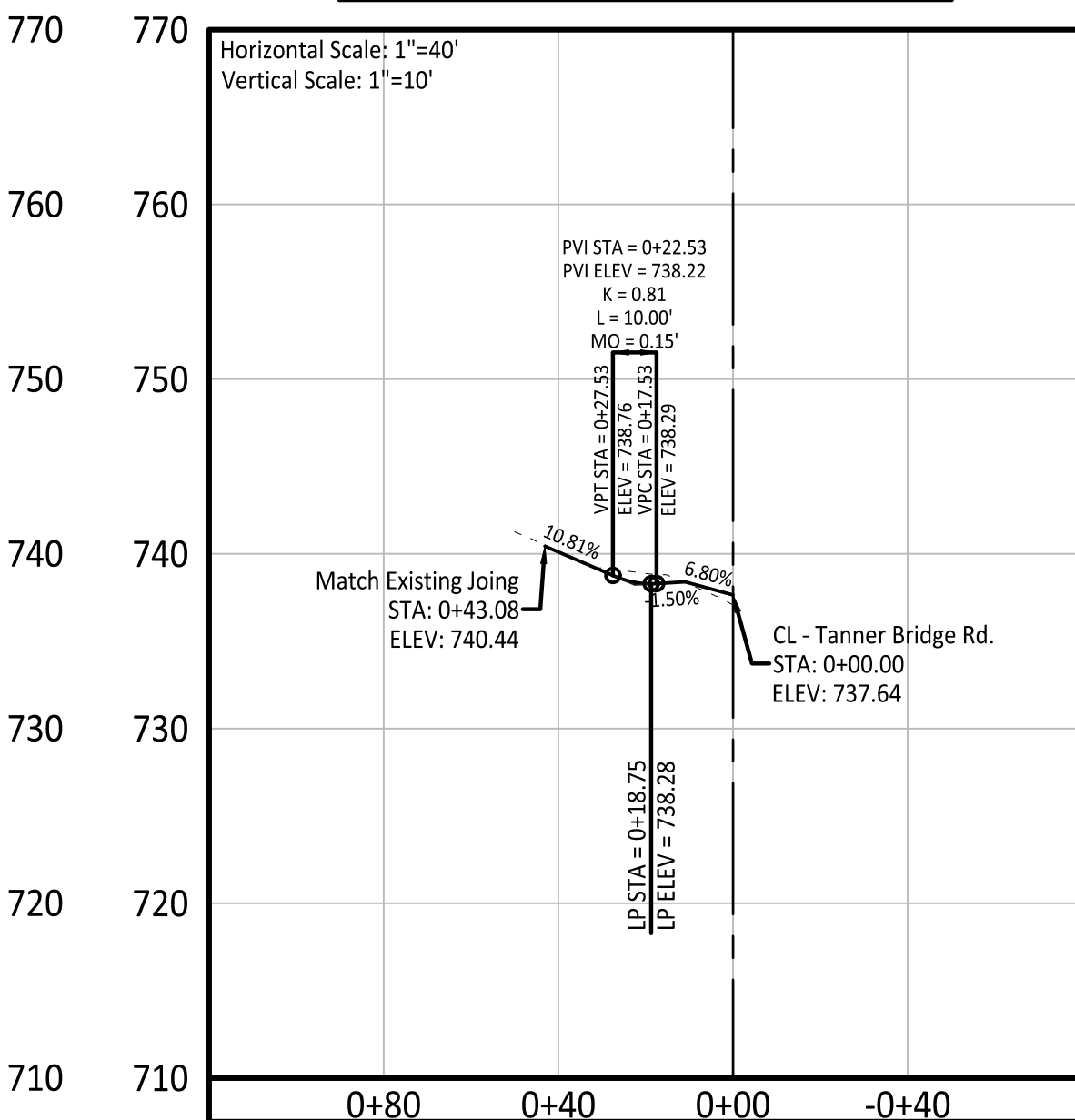
Driveway - 4+33.99 - Lt.



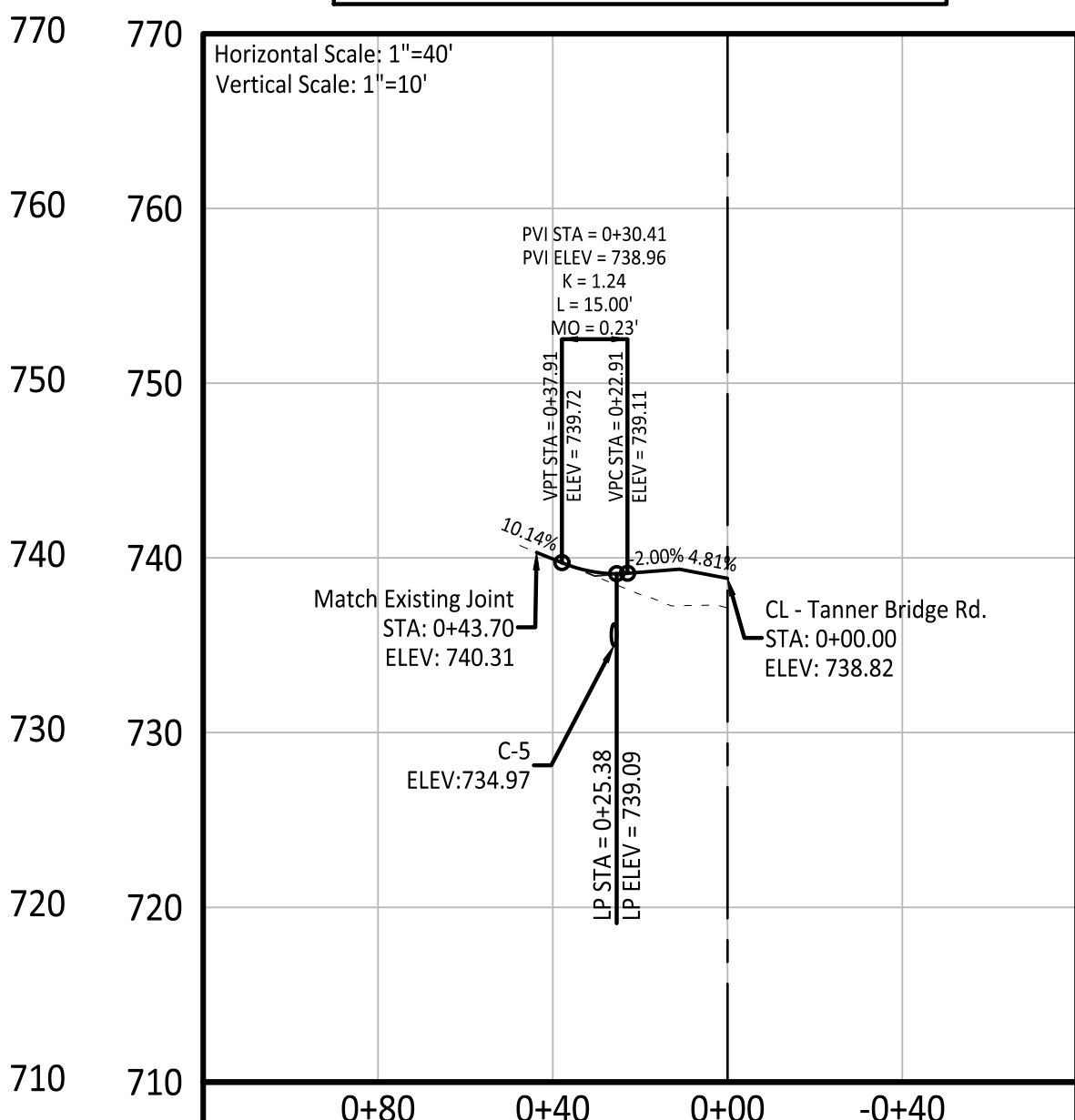
Driveway - 5+12.22 - Rt.



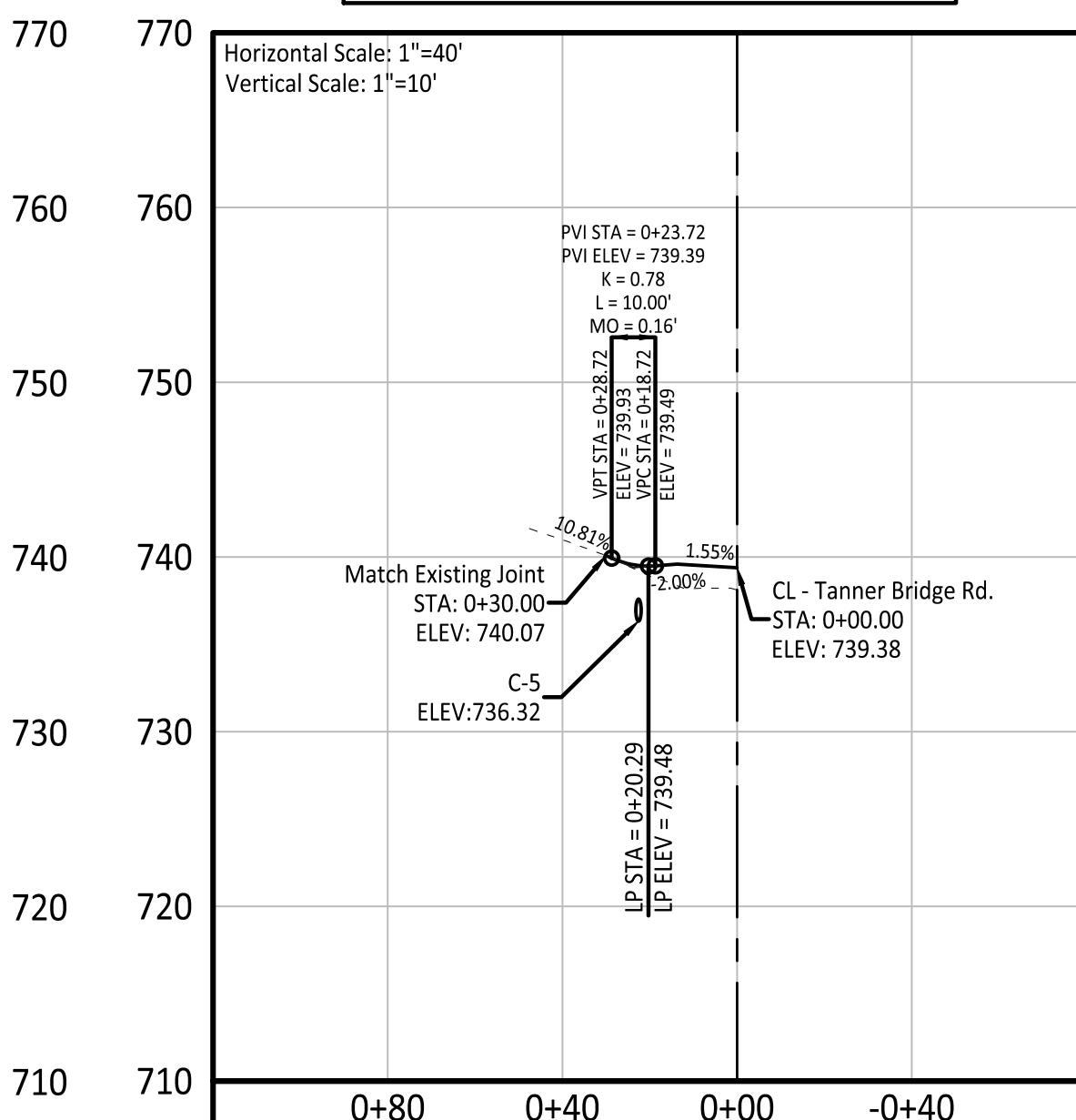
Driveway - 6+49.19 - Lt.



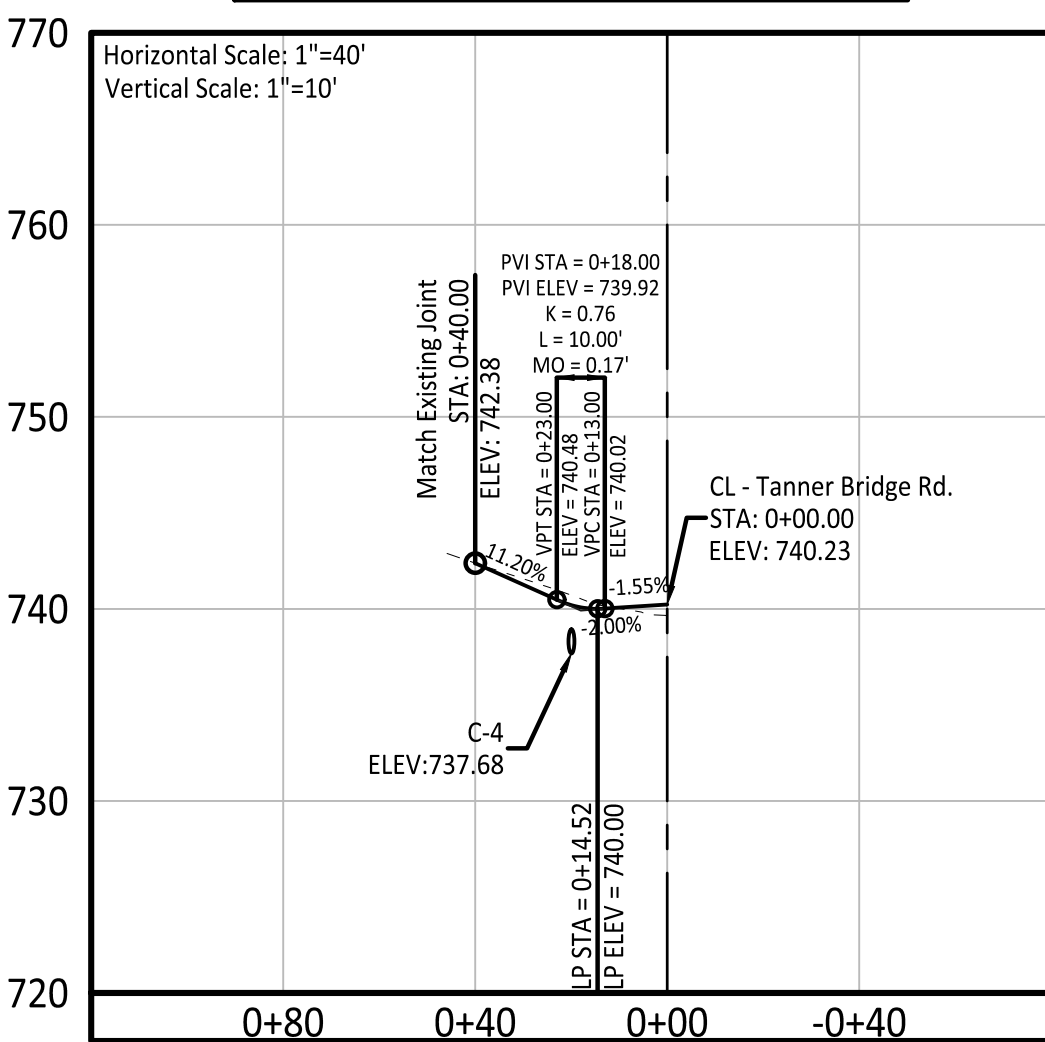
Driveway - 7+96.60 - Lt.



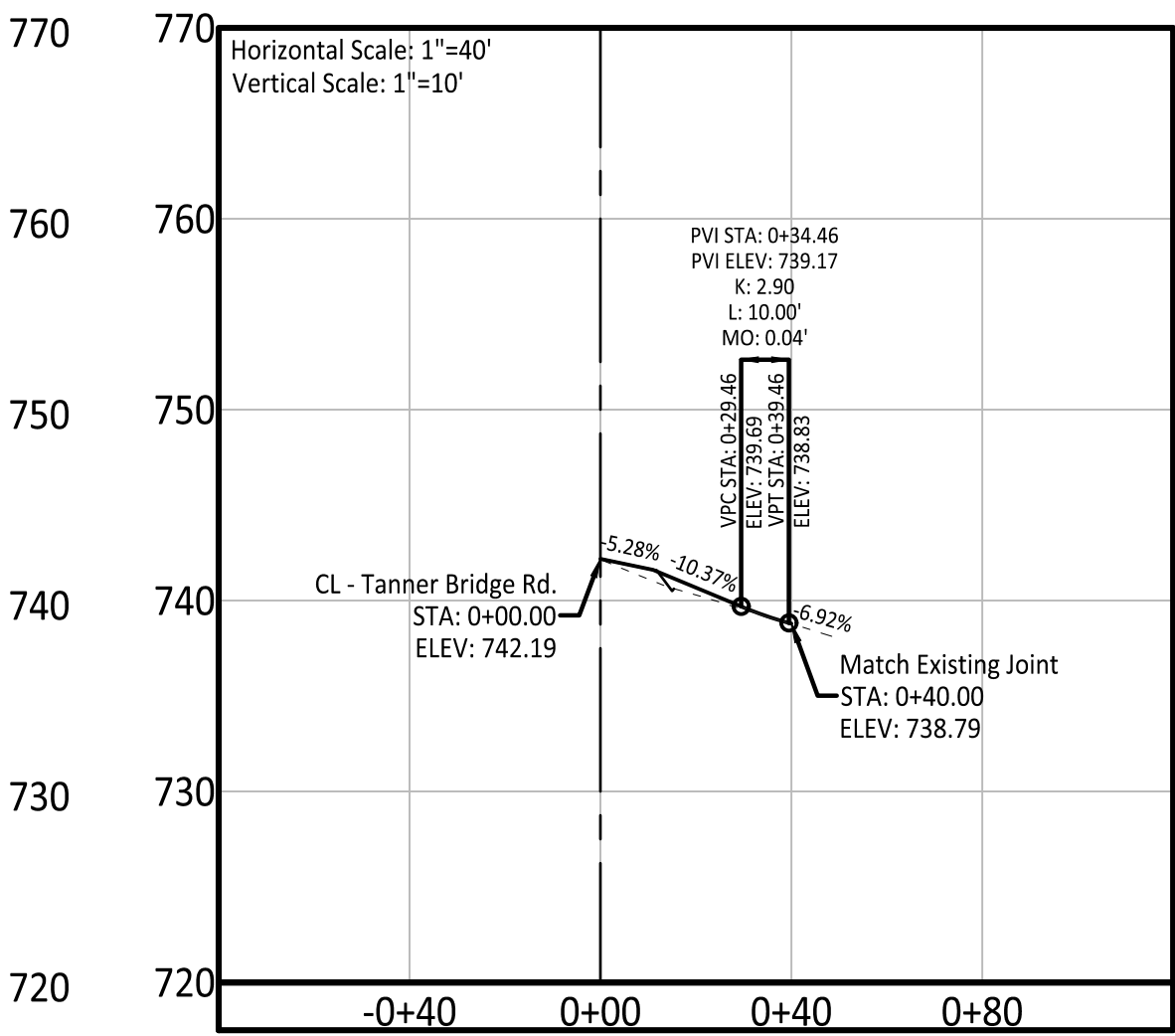
Driveway - 8+64.36 - Lt.



Driveway - 9+32.17 - Lt.



Driveway - 10+31.18 - Rt.



PRINTS ISSUED

DECEMBER 16, 2021

REVISIONS:

Central Missouri Professional Services, Inc.

ENGINEERING - SURVEYING - MATERIALS TESTING

2500 E. MCGARTY JEFFERSON CITY, MISSOURI 65101

(573) 634-9455 (573) 634-8898



Central Missouri Professional Services, Inc. Missouri State Certificate of Authority #001558



12/16/2021 Patrick P. Kremer, PE - Engineer MO# PE-2012018094

TANNER BRIDGE ROAD ALIGNMENT IMPROVEMENTS, PROJECT # 2022-601-1

COLE COUNTY PUBLIC WORKS

TANNER BRIDGE ROAD COLE COUNTY, MISSOURI

CMPS JOB No. 17-035

DRN. BY: PPK CKD. BY: CFB

SCALE: AS INDICATED

SHEET TITLE

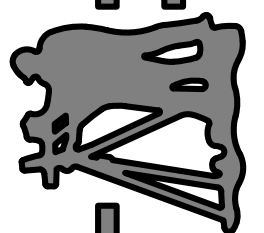
ENTRANCE PROFILES

SHEET NUMBER

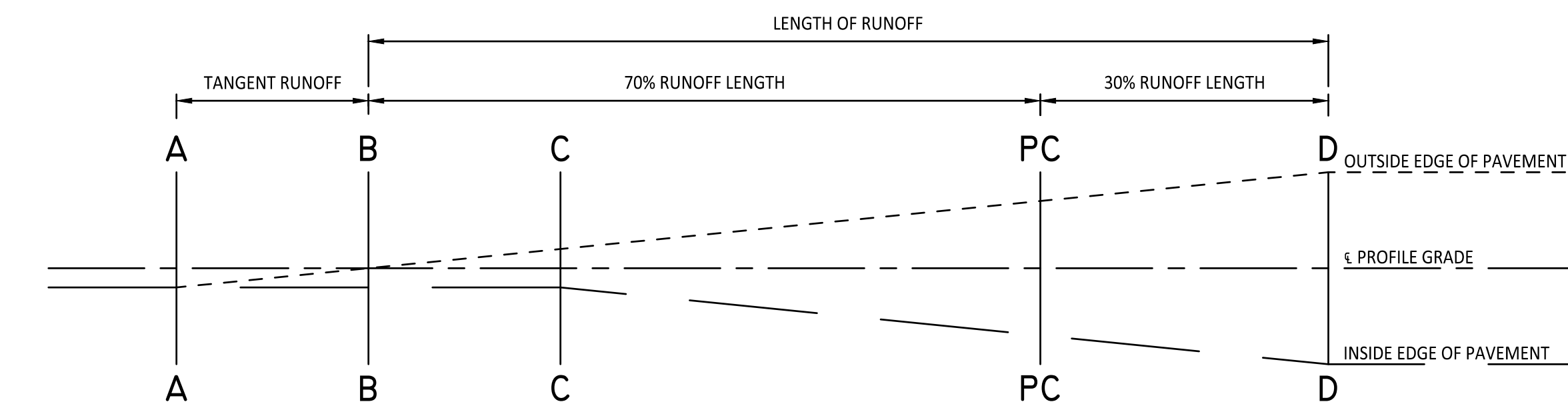
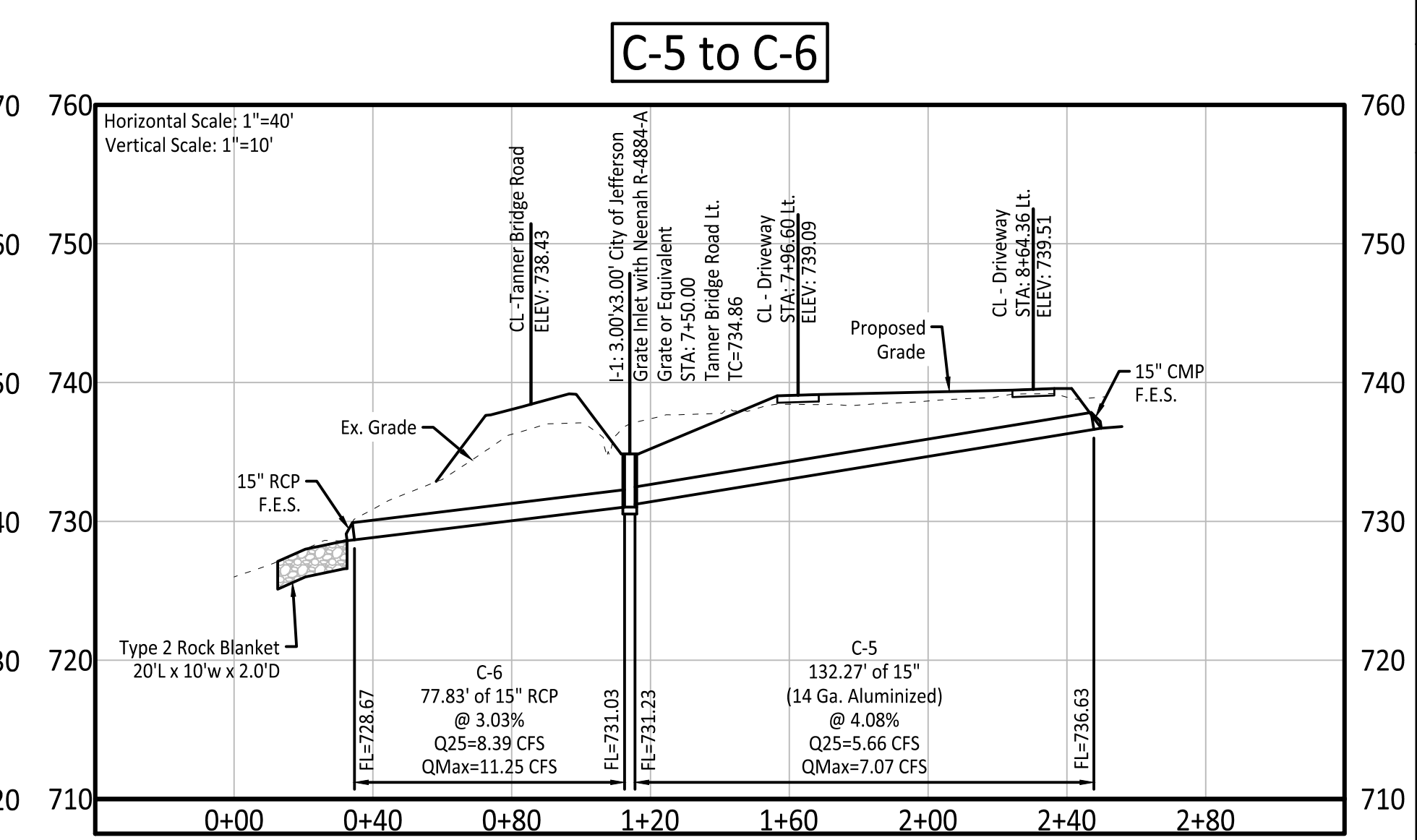
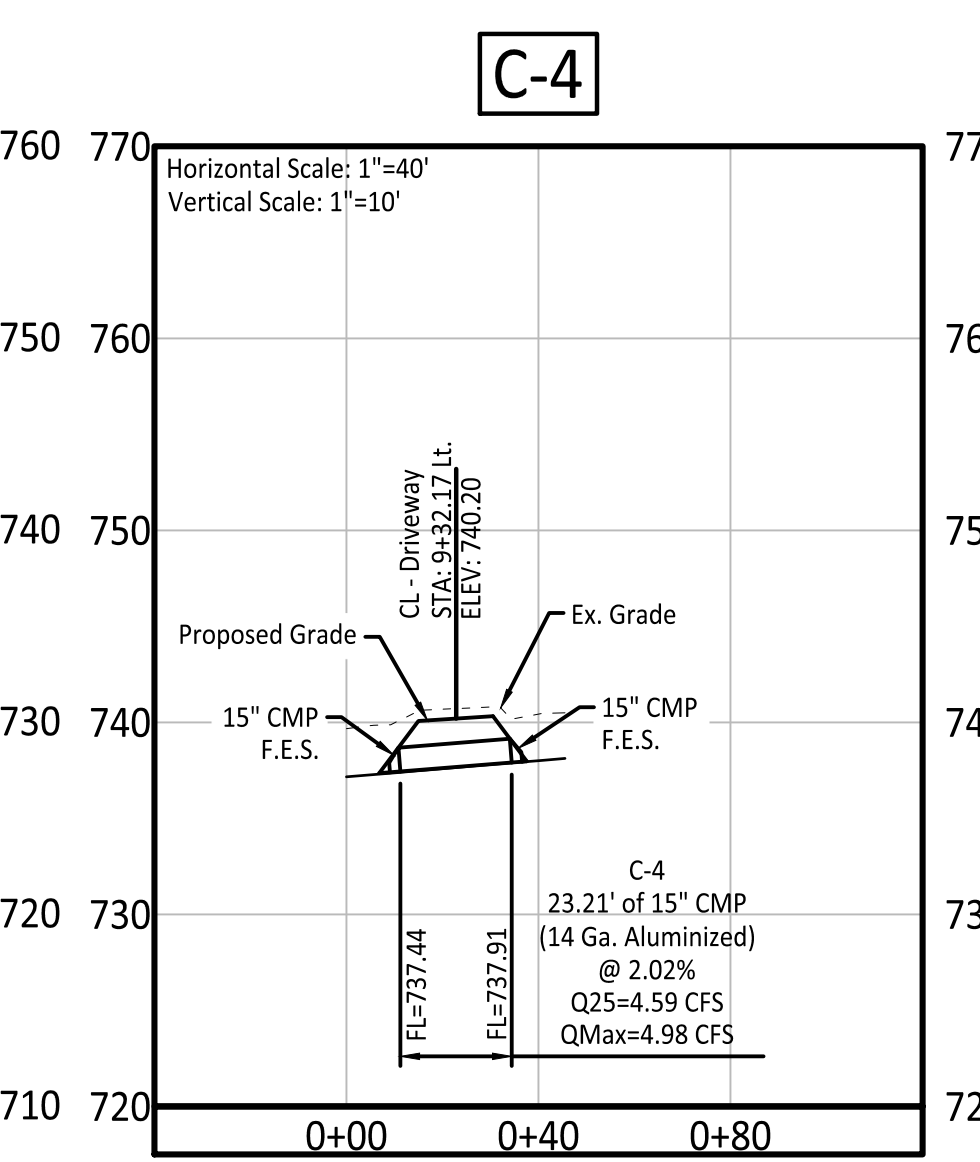
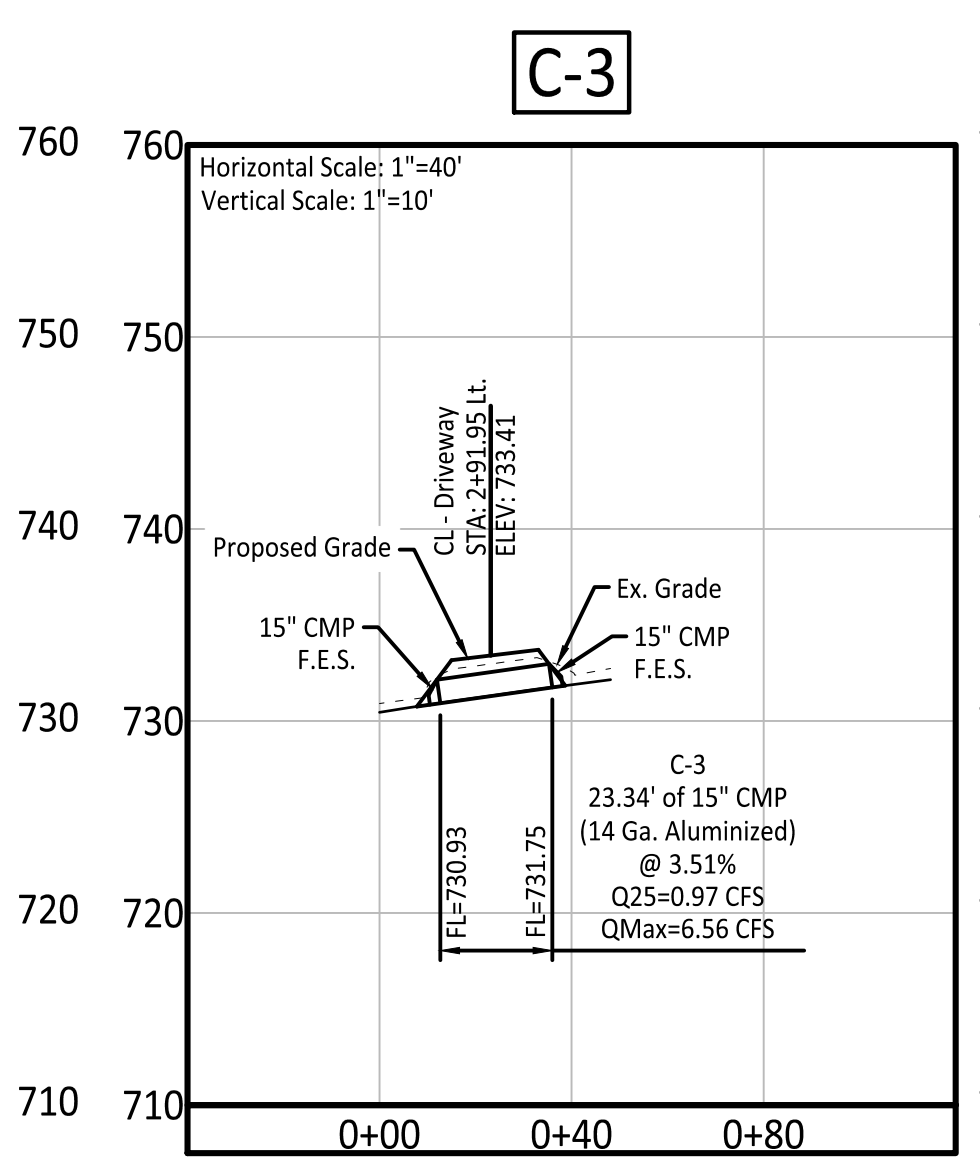
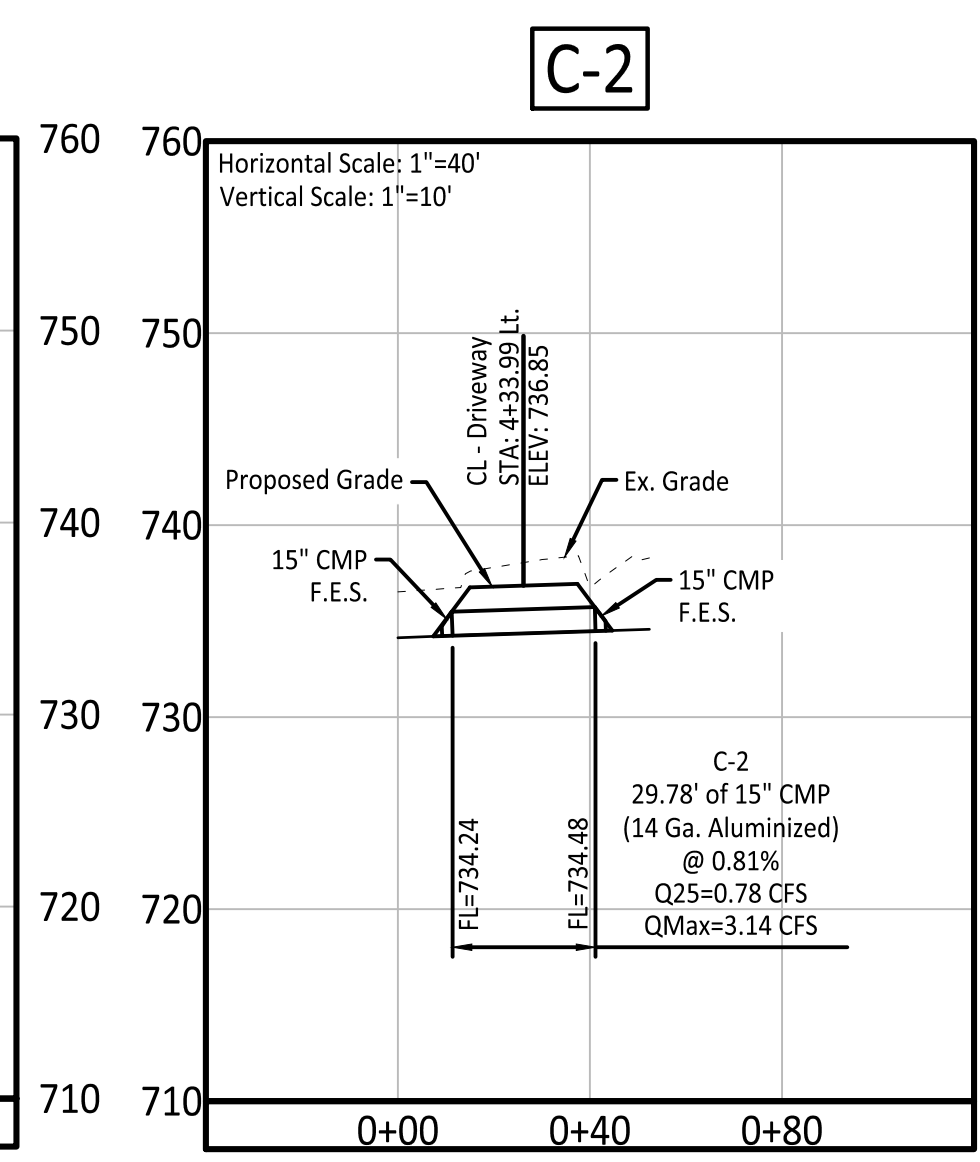
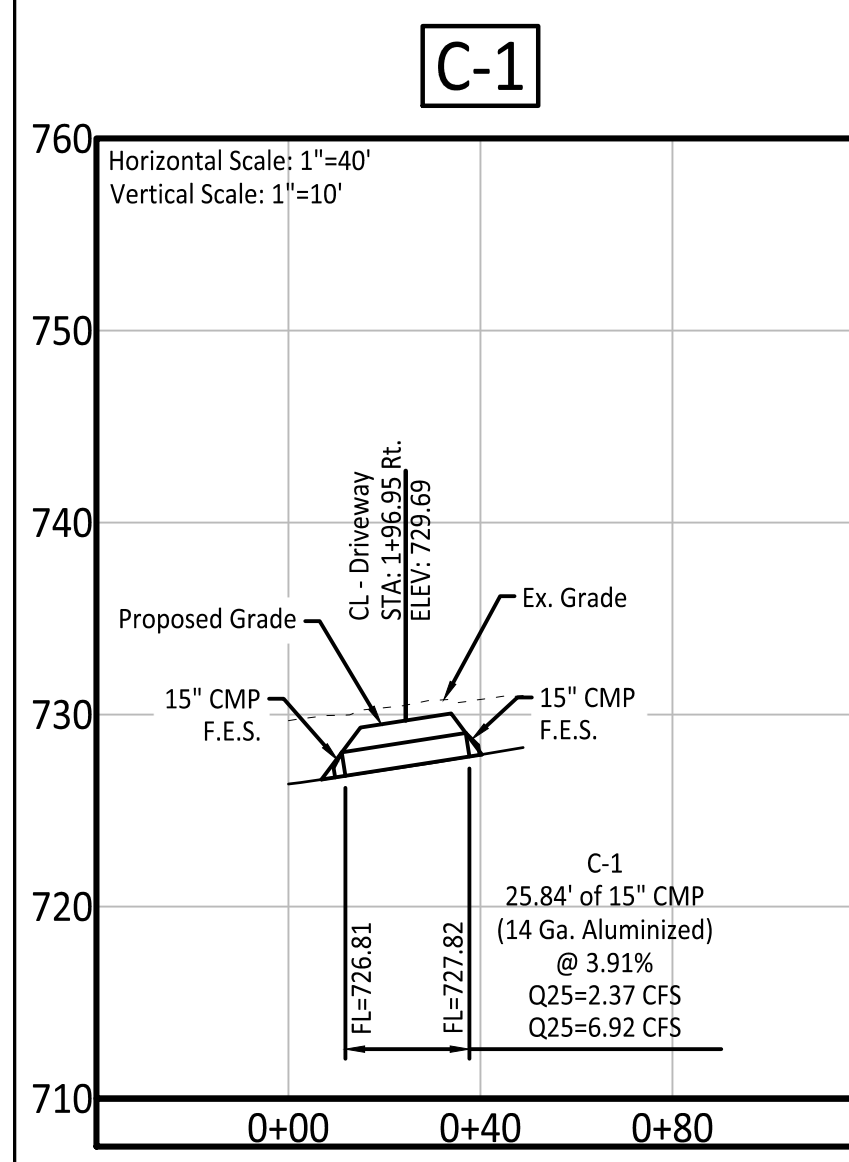
6

OF 11 SHEETS

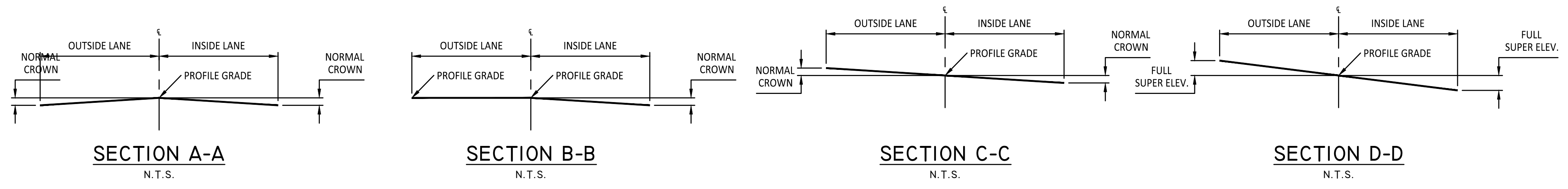
Central Missouri Professional Services, Inc.
ENGINEERING - SURVEYING - MATERIALS TESTING
2500 E. McCARTY
JEFFERSON CITY, MISSOURI 65101
(573) 634-9455
(573) 634-8898



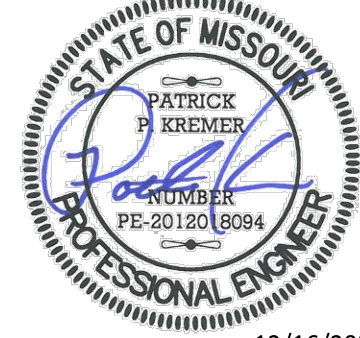
Central Missouri Professional Services, Inc.
Missouri State Certificate of Authority #001558



CURVE #	SUPERELEVATION SECTION	STATION	MAX. SUPER.
1	AA	1+98.41	
1	BB	2+39.88	
1	CC	2+81.35	
1	DD	3+80.88	6.80%
1	DD	7+55.42	6.80%
1	CC	8+54.95	
1	BB	8+96.42	
1	AA	9+37.88	



SUPERELEVATION DATA



12/16/2021
Patrick P. Kremer, PE - Engineer
MO# PE-2012018094

TANNER BRIDGE ROAD ALIGNMENT IMPROVEMENTS, PROJECT # 2022-601-1
COLE COUNTY PUBLIC WORKS
TANNER BRIDGE ROAD
COLE COUNTY, MISSOURI

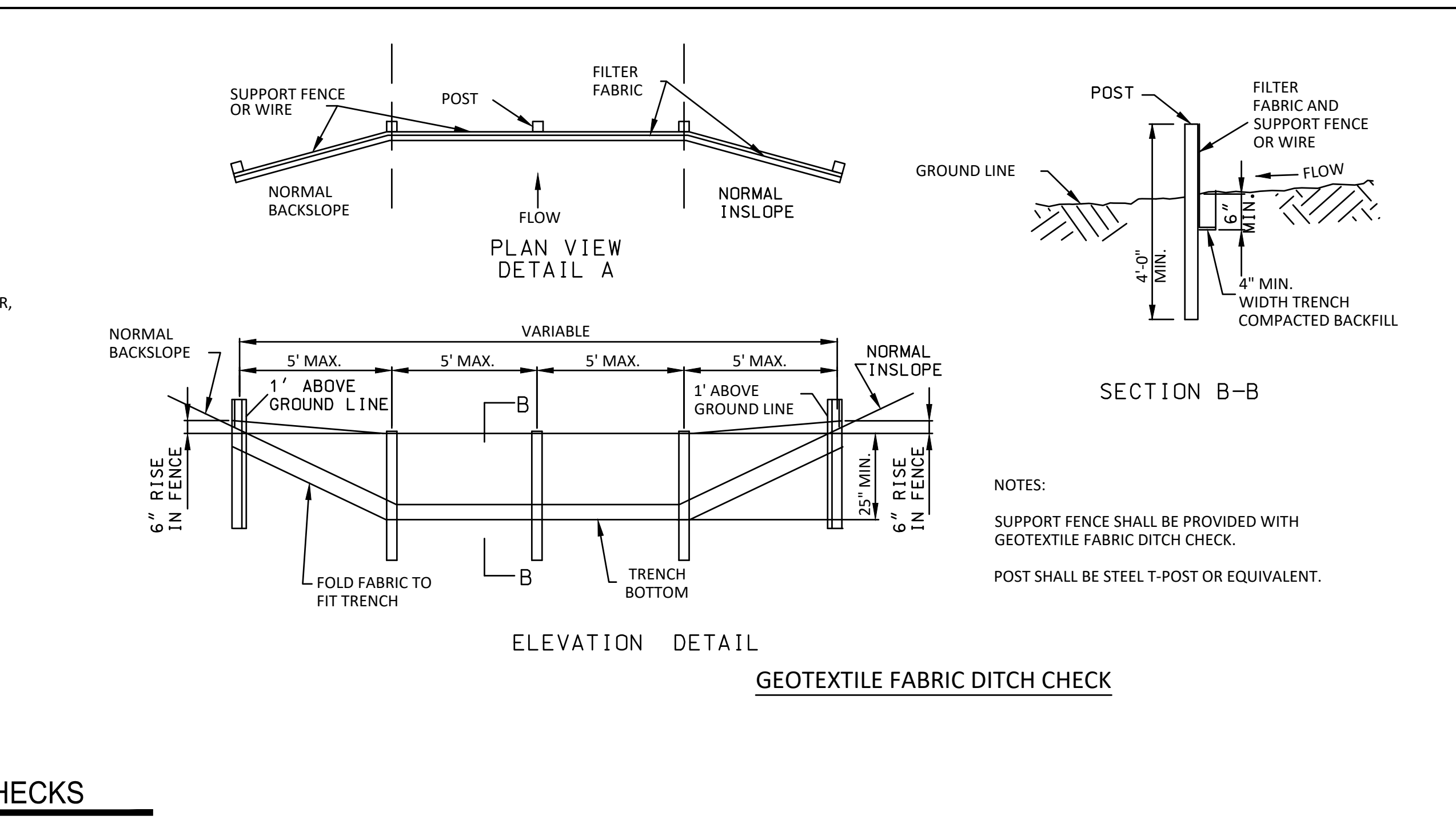
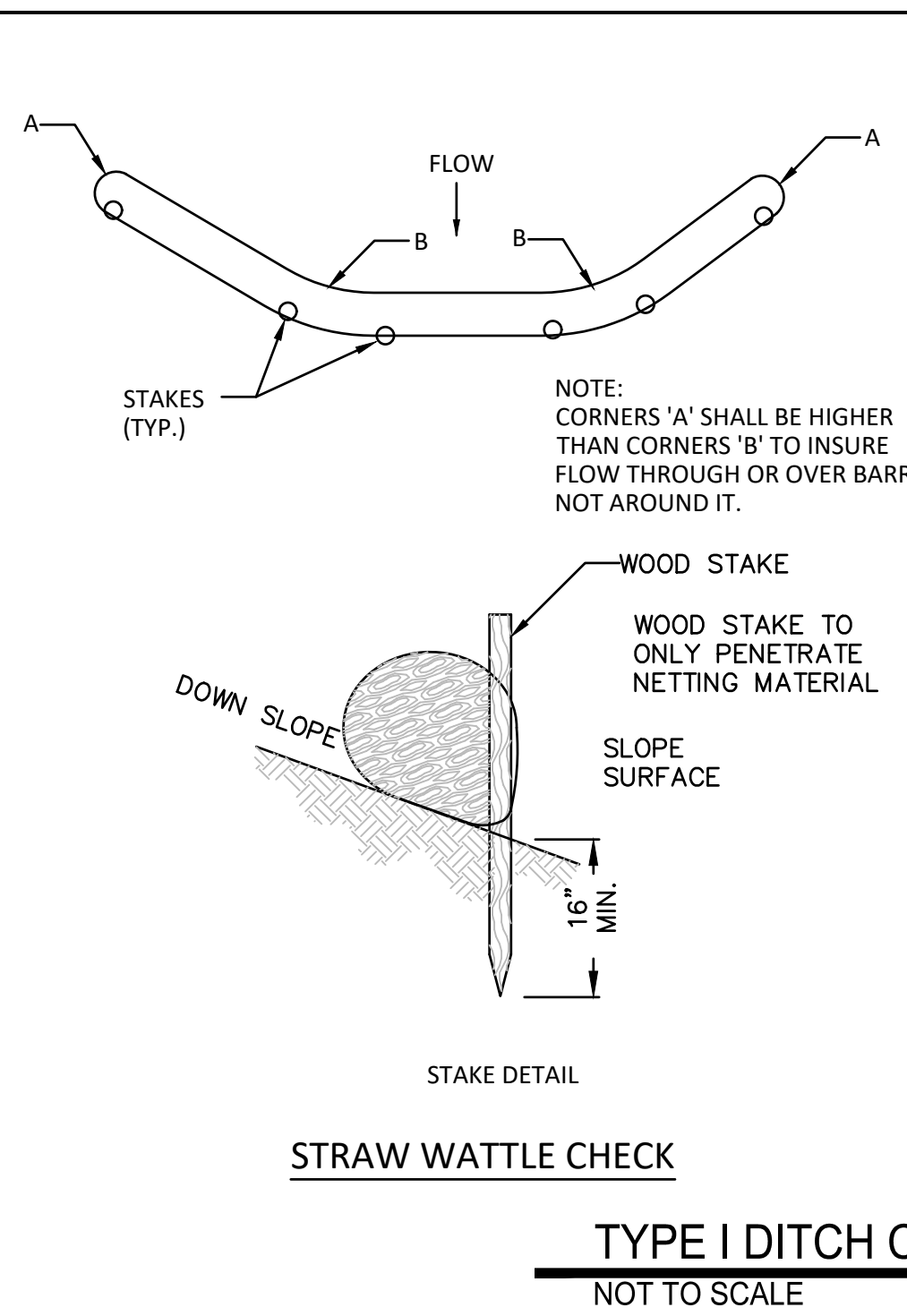
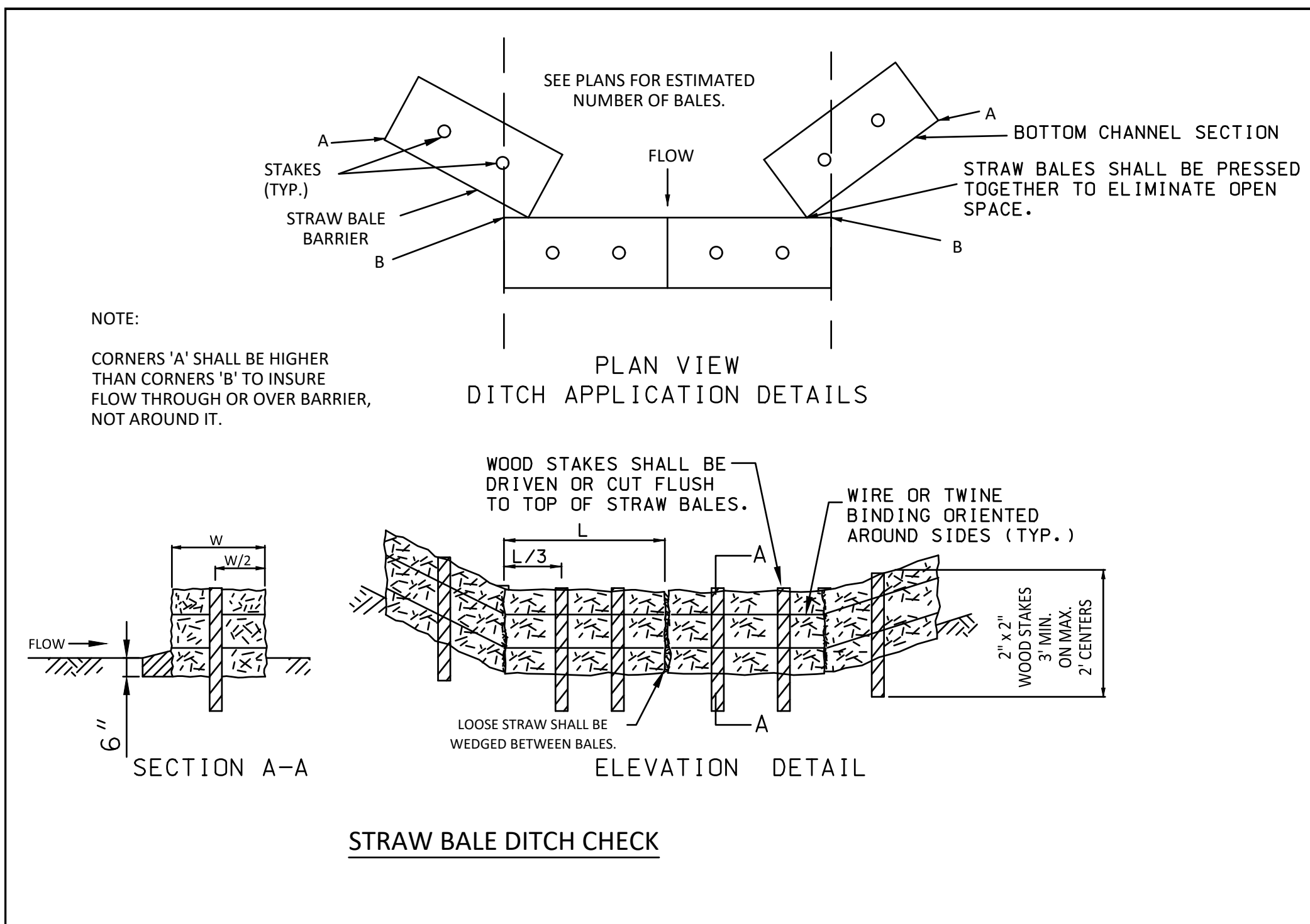
CMPS JOB No. 17-035

DRN. BY: PPK CKD. BY: CFB

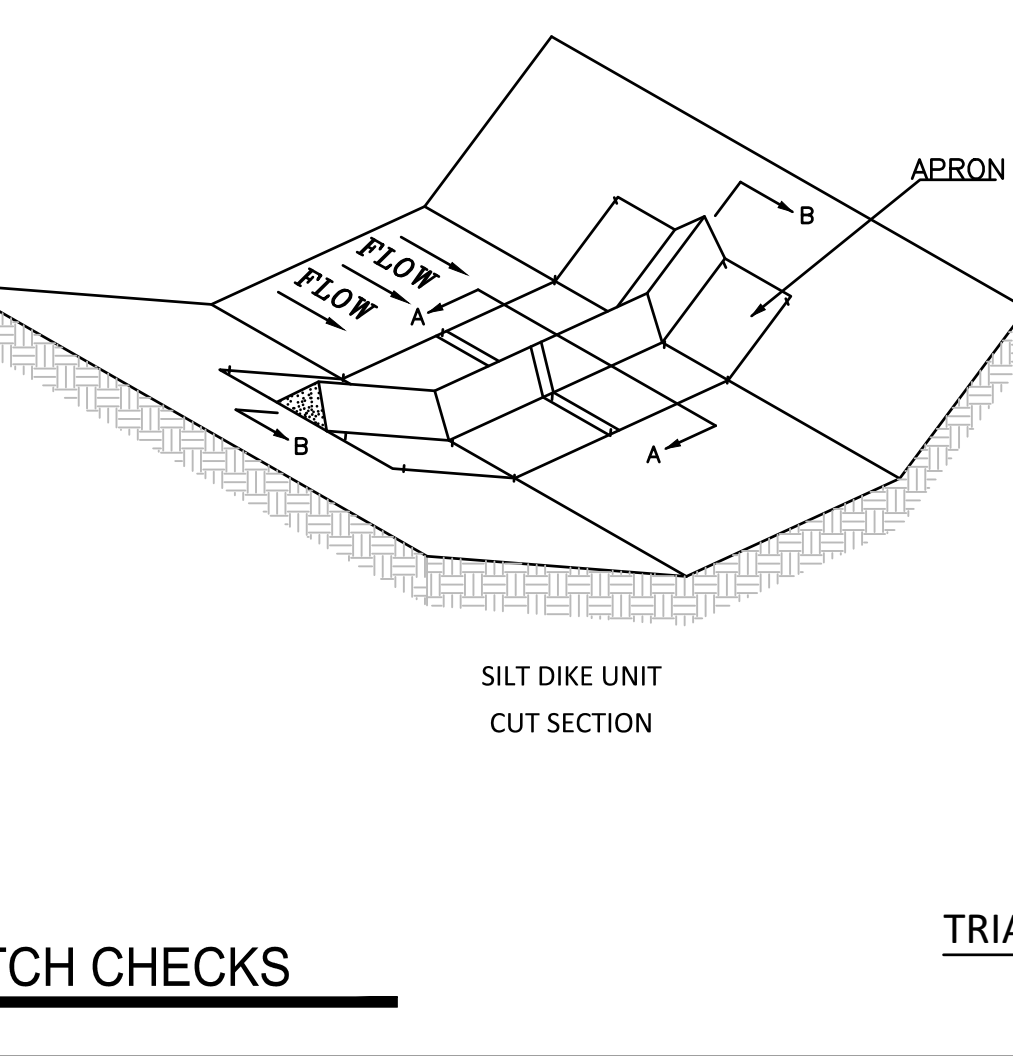
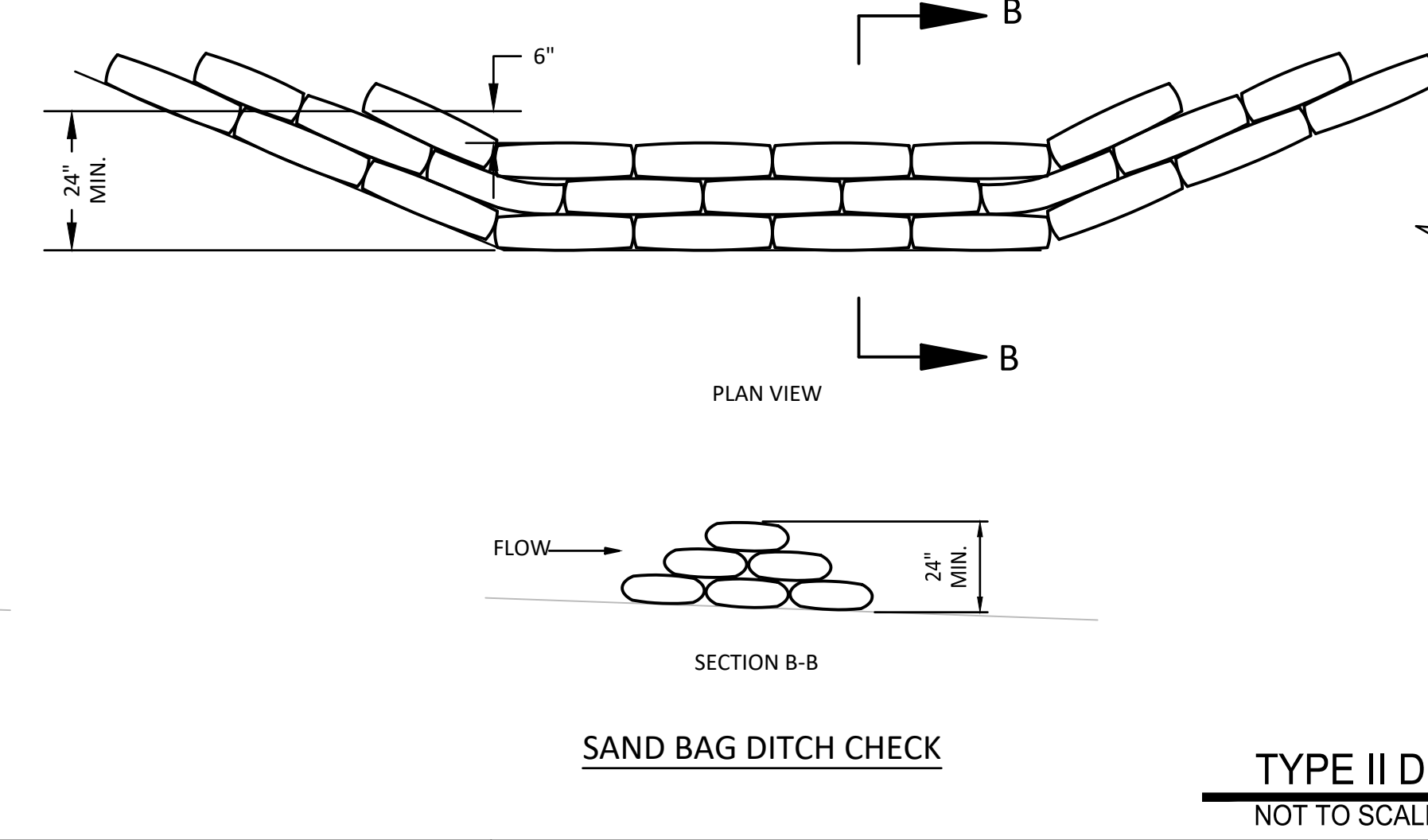
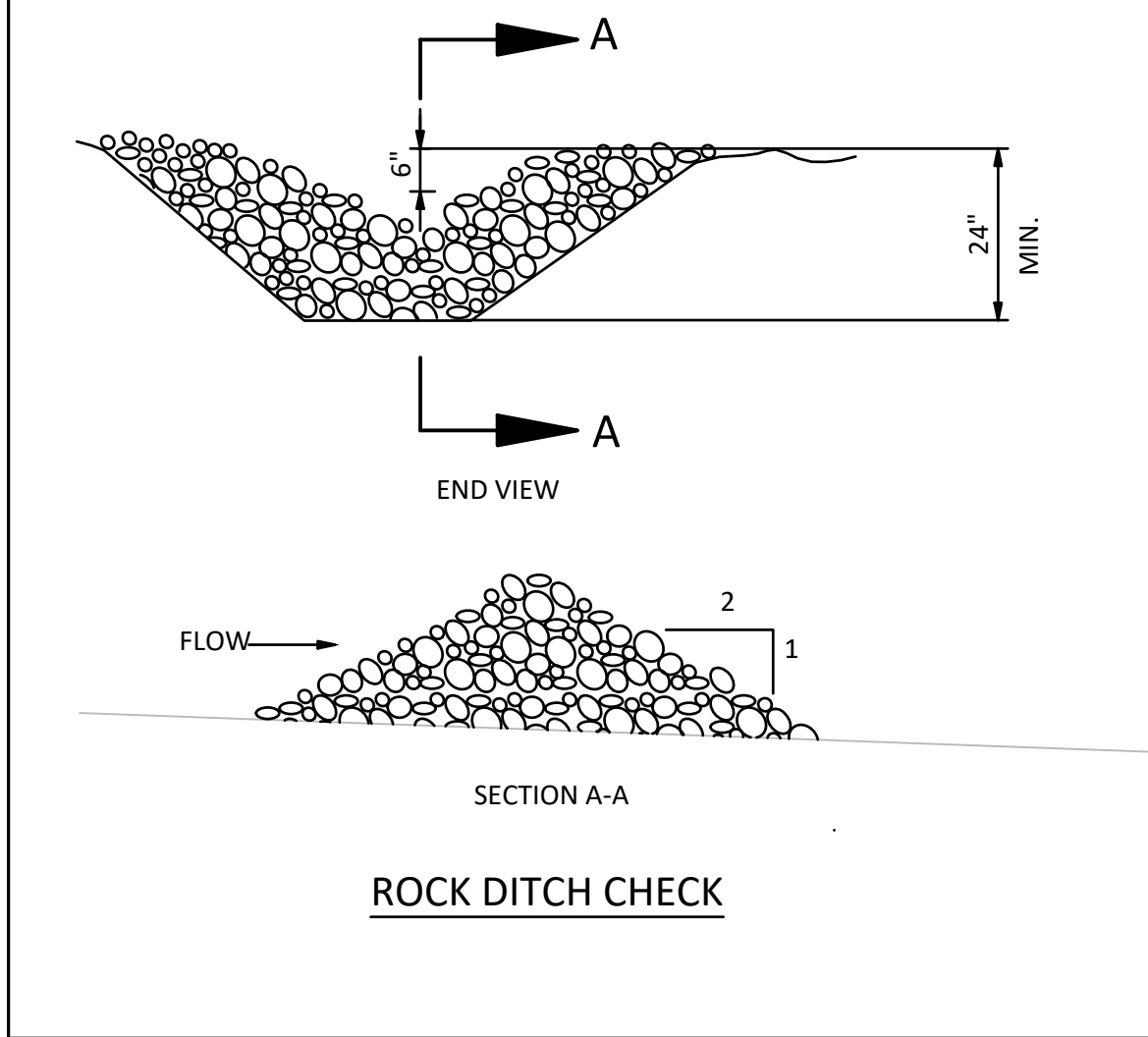
SCALE: AS INDICATED

SHEET TITLE
STORM PROFILES & DETAILS

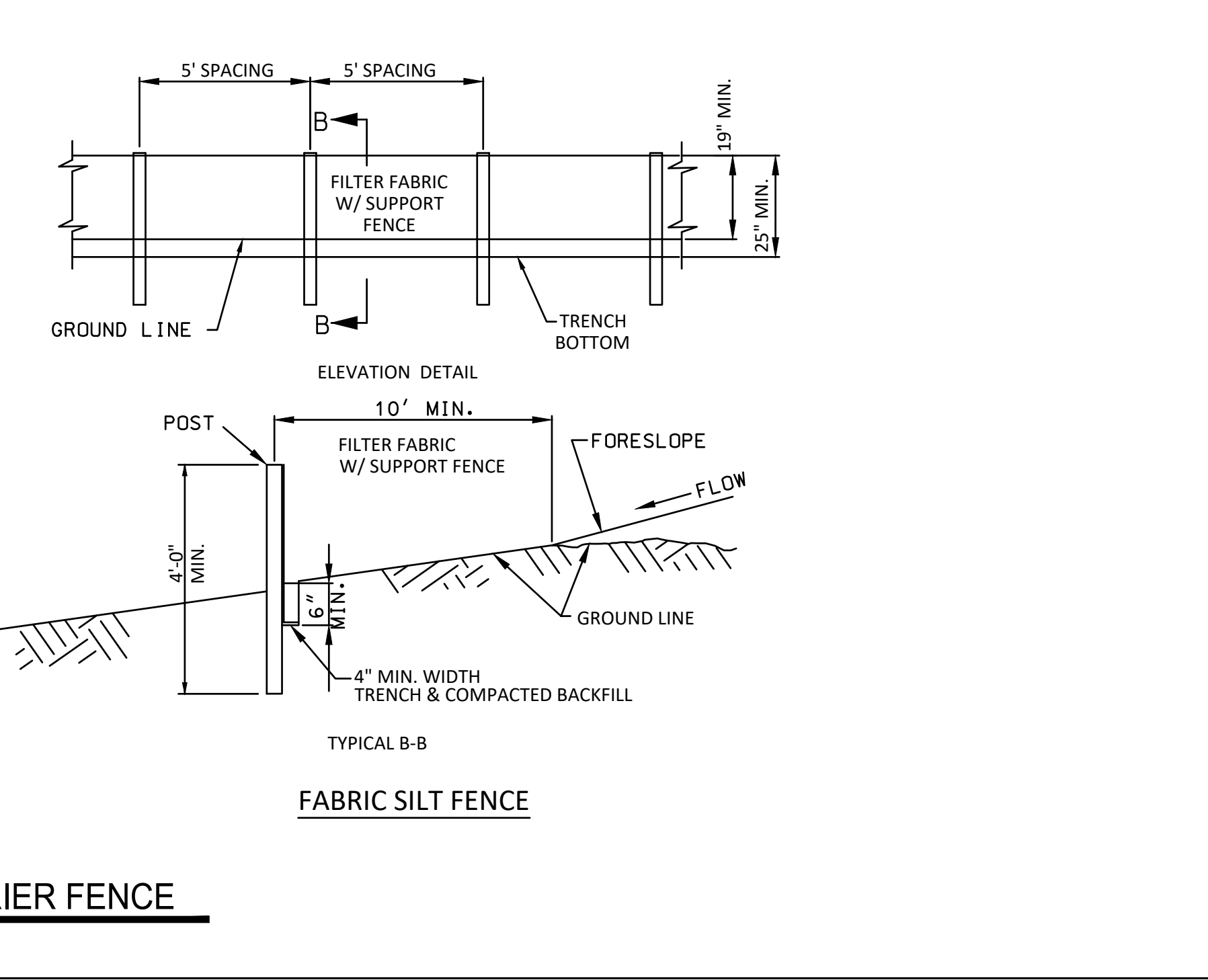
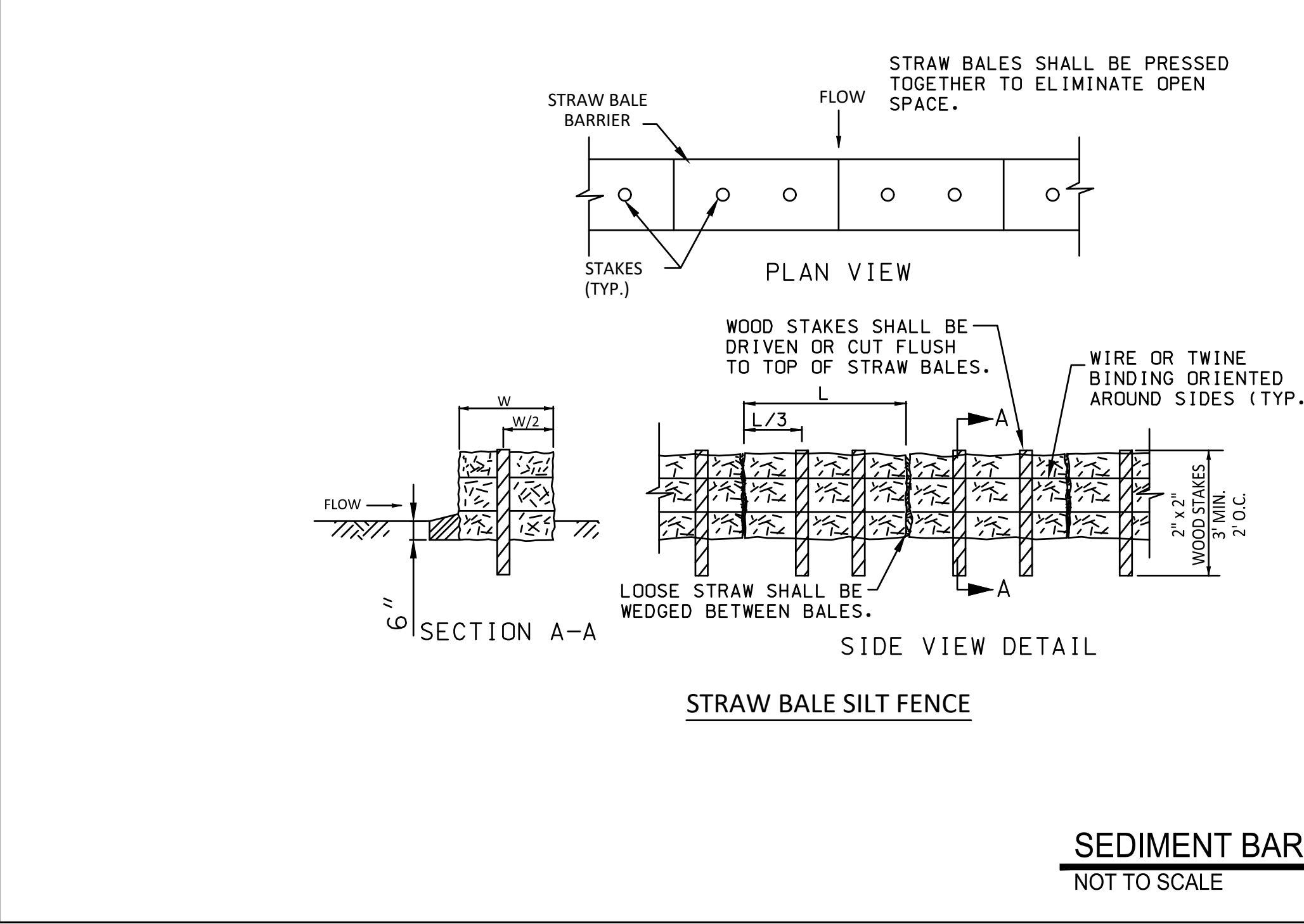
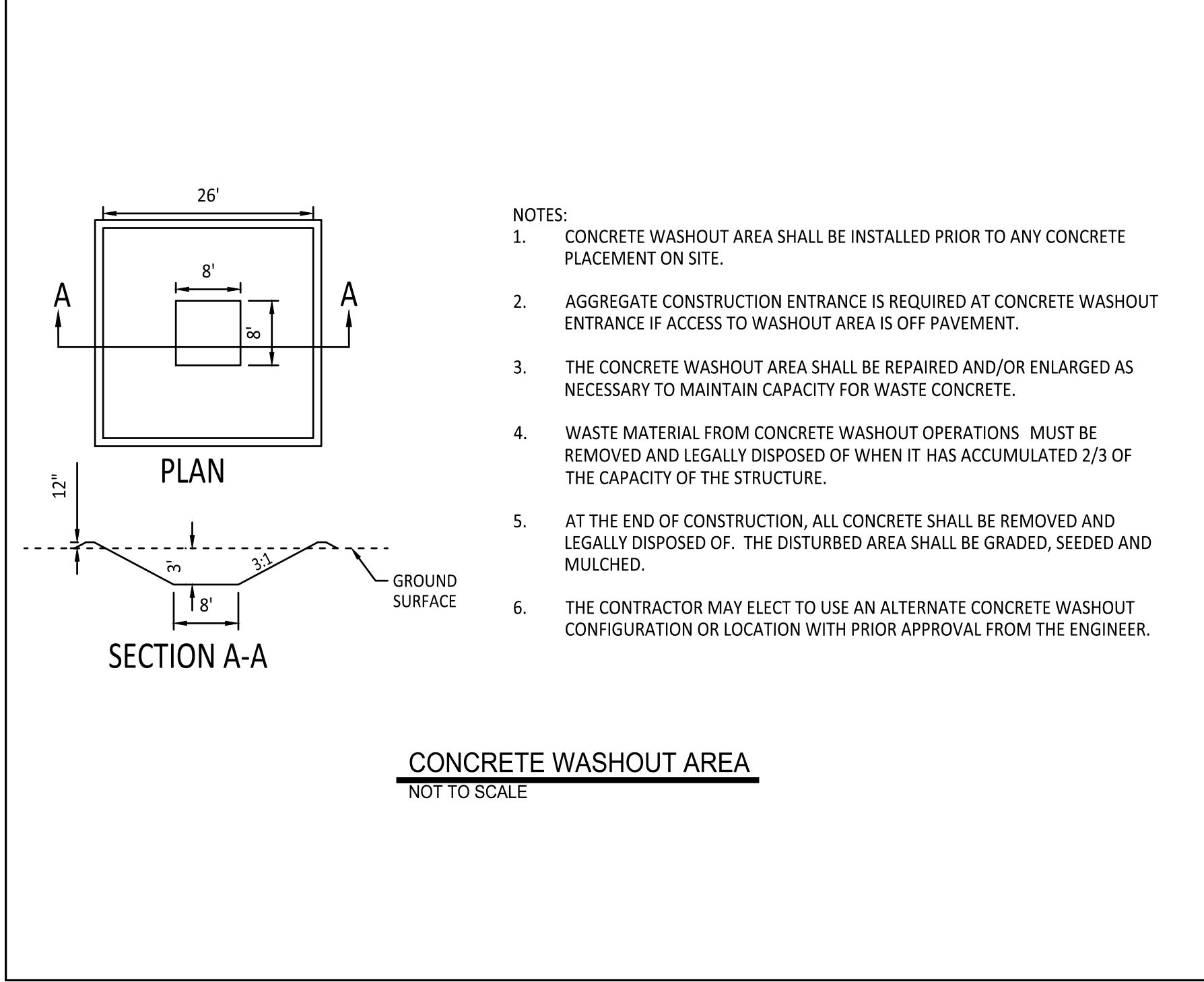
SHEET NUMBER



TYPE I DITCH CHECKS
NOT TO SCALE



TYPE II DITCH CHECKS
NOT TO SCALE



SEDIMENT BARRIER FENCE
NOT TO SCALE

PRINTS ISSUED
DECEMBER 16, 2021

REVISIONS:

Central Missouri Professional Services, Inc.
ENGINEERING - SURVEYING - MATERIALS TESTING
2500 E. MCGARTY
JEFFERSON CITY, MISSOURI 65101
(573) 634-9455
(573) 634-8898

Missouri State Certificate of Authority #001559

STATE OF MISSOURI
PATRICK P. KREMER
PROFESSIONAL ENGINEER
PE-2012018094
12/16/2021
Patrick P. Kremer, PE - Engineer
MO# PE-2012018094

TANNER BRIDGE ROAD ALIGNMENT
IMPROVEMENTS, PROJECT # 2022-601-1
COLE COUNTY PUBLIC WORKS

TANNER BRIDGE ROAD
COLE COUNTY, MISSOURI

CMPS JOB No. 17-035

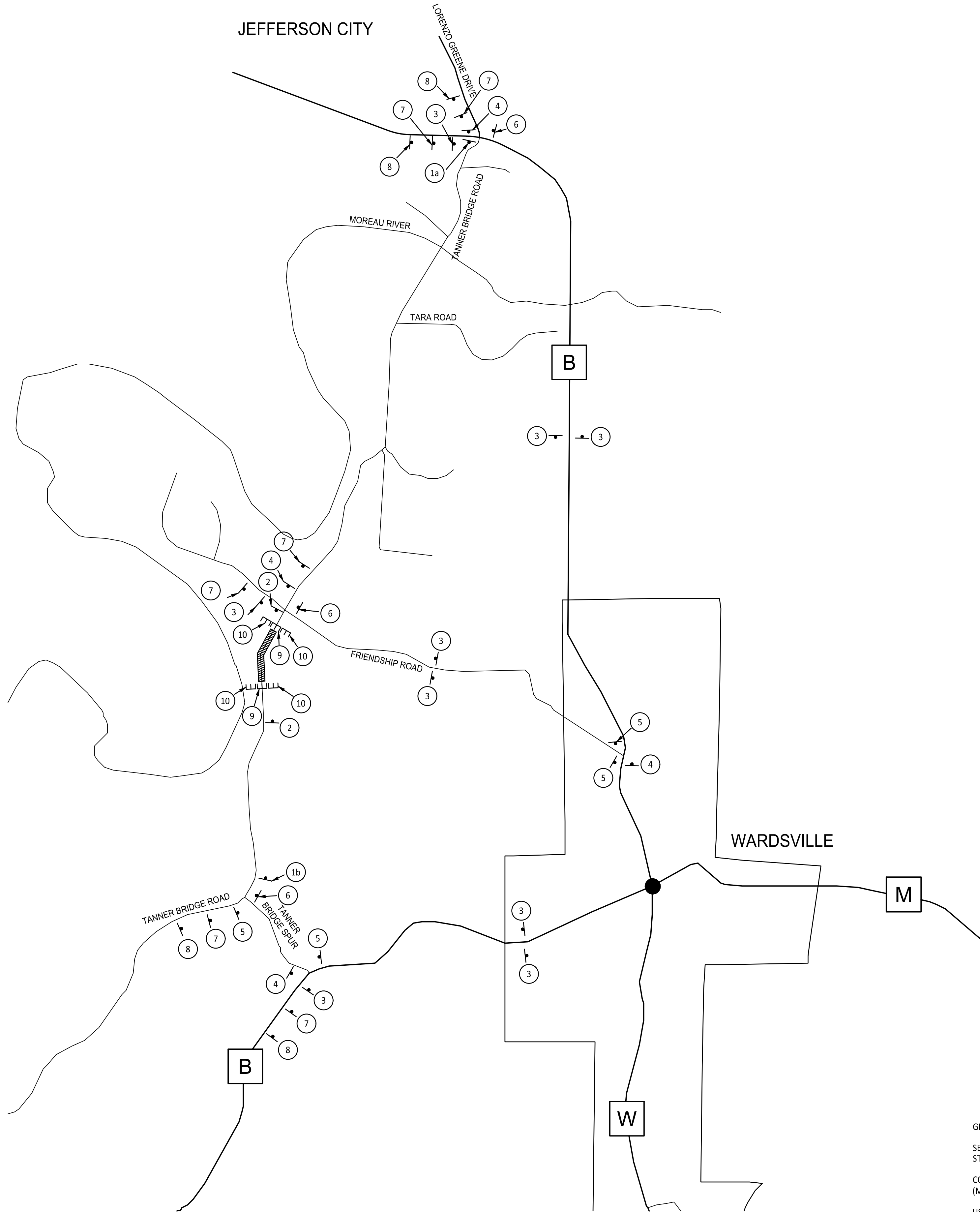
DRN. BY: PPK CKD. BY: CFB

SCALE: AS INDICATED

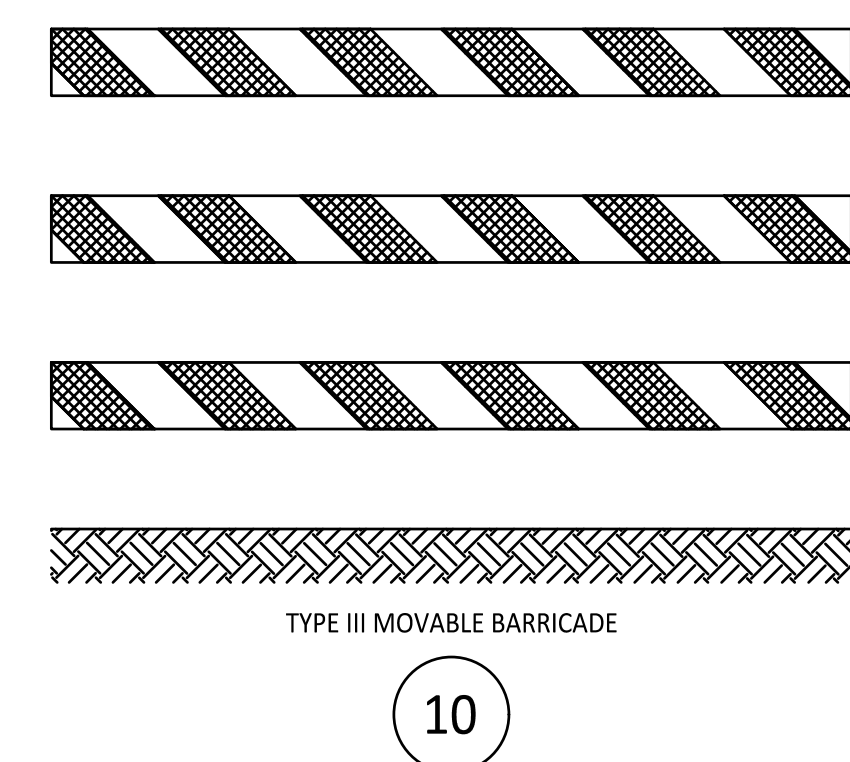
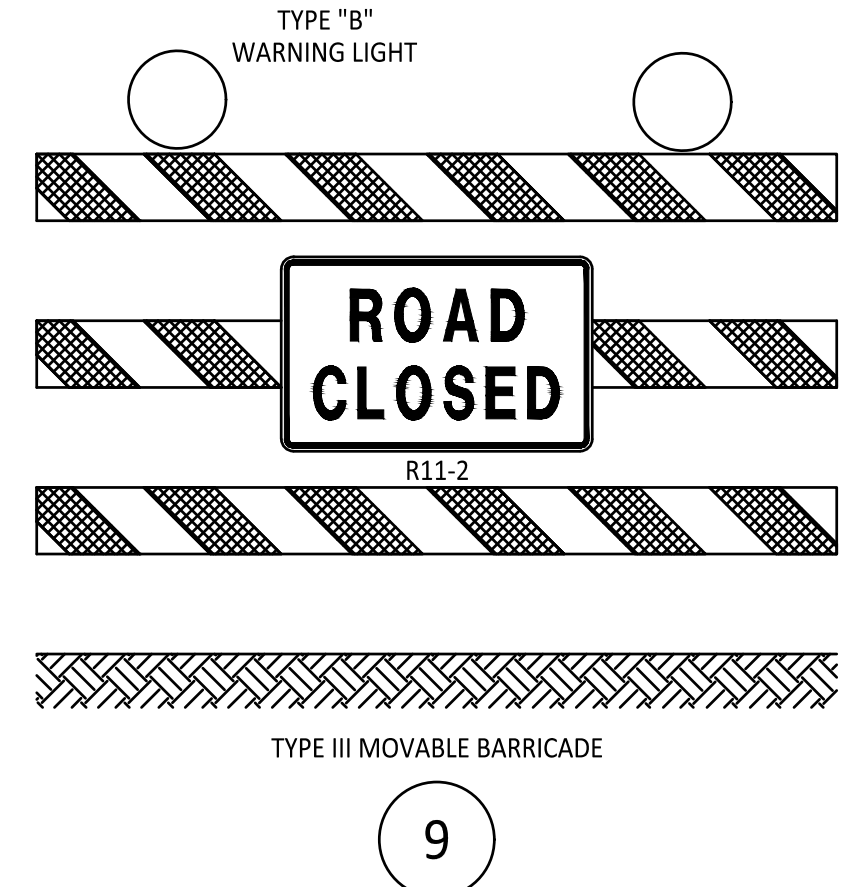
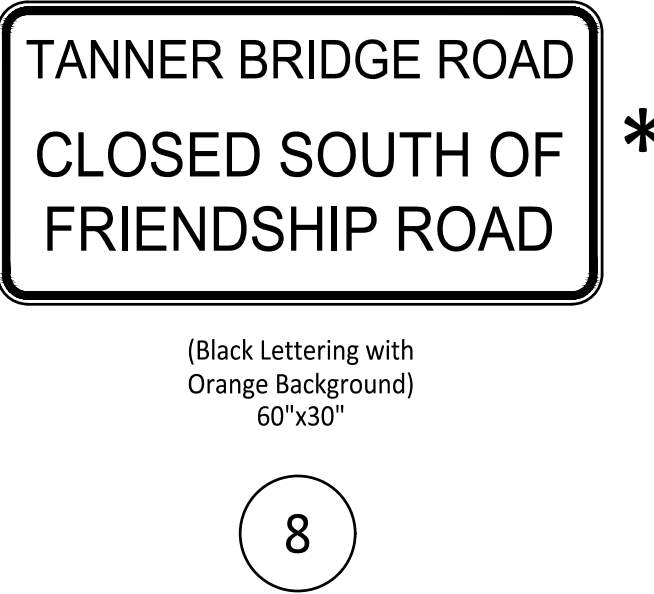
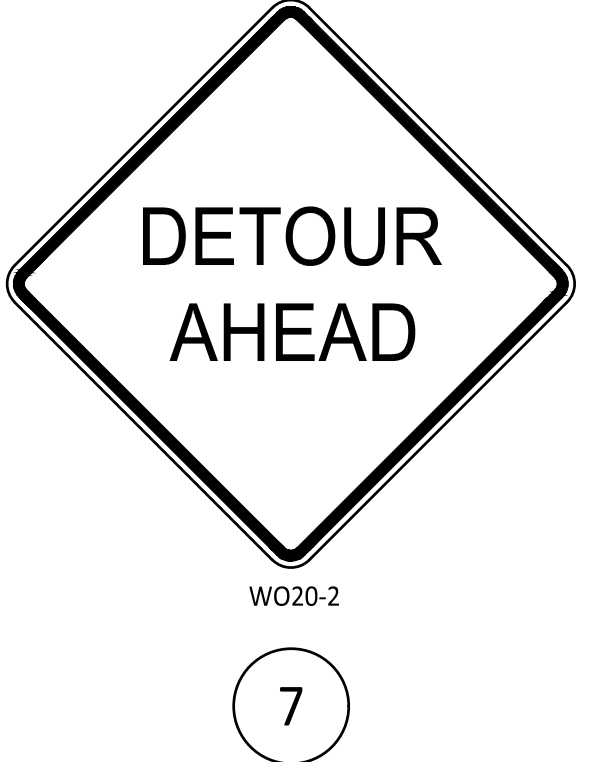
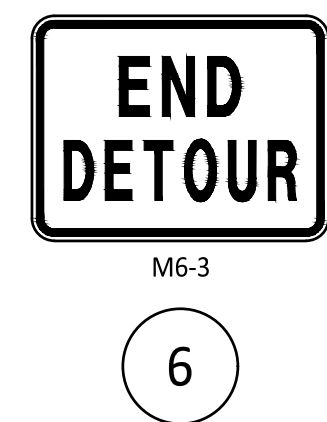
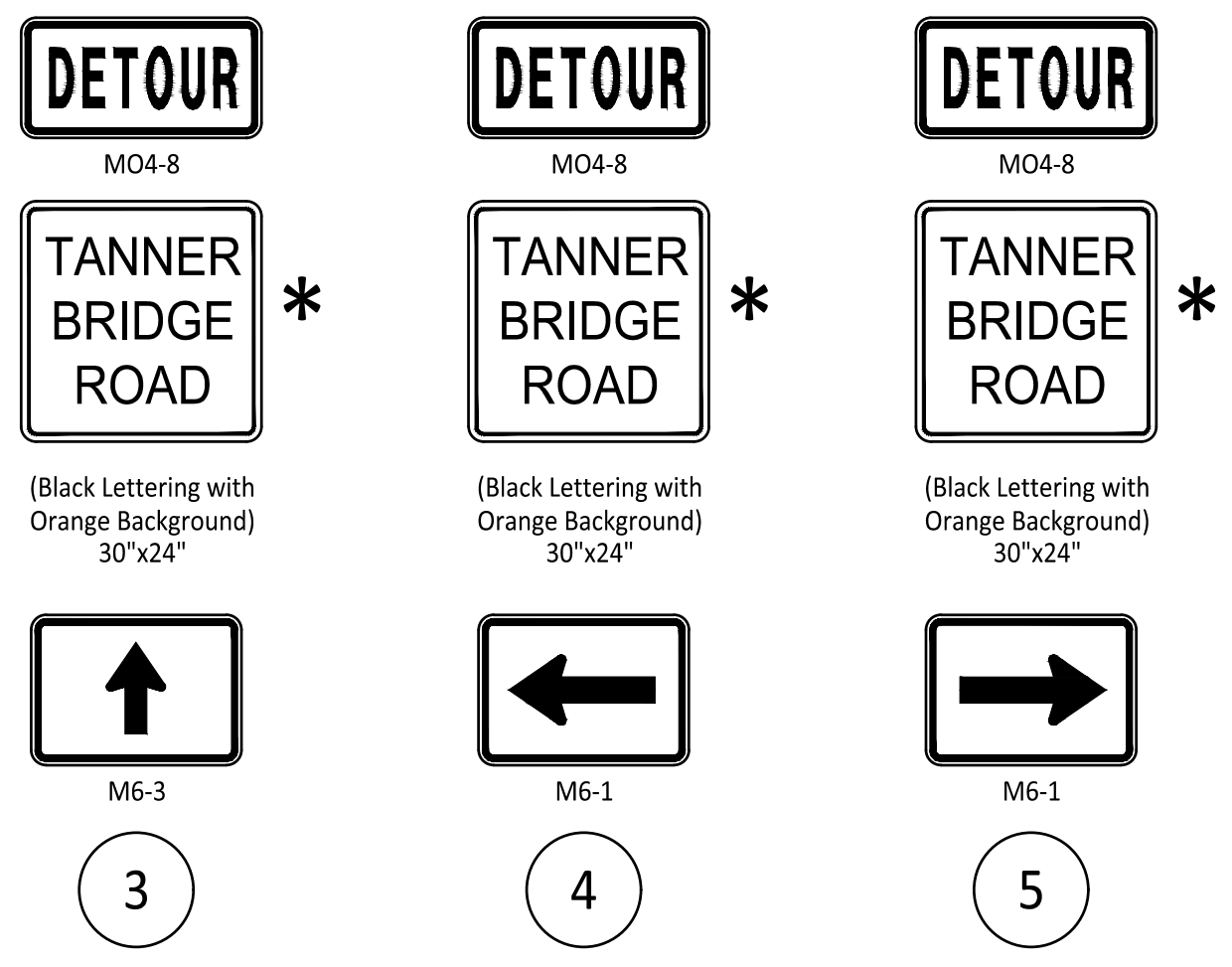
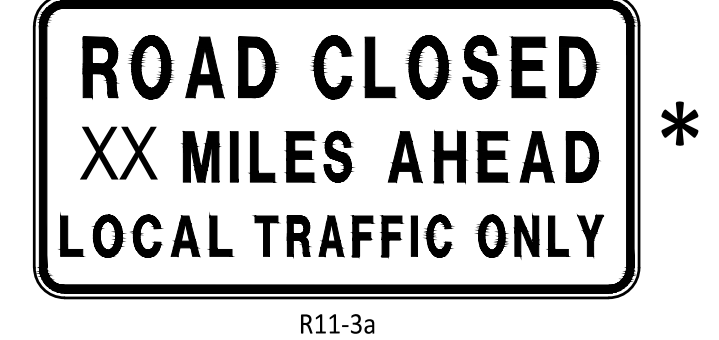
SHEET TITLE
EROSION CONTROL DETAILS

SHEET NUMBER
9

OF 11 SHEETS



1a XX = 2.5
 1b XX = 1.0

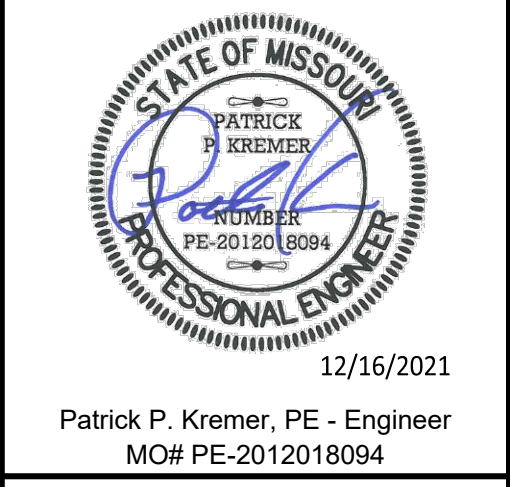


GENERAL NOTES:
 SEE JOB SPECIAL PROVISIONS AND STANDARDS NO. 616.10 AND NO. 903.03 OF THE MISSOURI STANDARD PLANS FOR HIGHWAY CONSTRUCTION FOR DETAILS NOT SHOWN.
 CONTRACTOR SHALL COMPLY WITH THE MANUAL ON UNIFORM TRAFFIC CONTROL DEVICES (MUTCD) FOR THE TRAFFIC CONTROL OF THIS PROJECT.
 USE A MINIMUM SIGN SPACING OF 500' OR AS DIRECTED BY THE ENGINEER.
 COVER ALL CONFLICTING SIGNS.
 * SIGN FURNISHED AND RETAINED BY COLE COUNTY. SEE JOB SPECIAL PROVISIONS.

LEGEND
 (25) d CONSTRUCTION SIGN W/SIGN NUMBER
 E TYPE III MOVABLE BARRICADE
 [Hatched Box] WORK SPACE

PRINTS ISSUED
 DECEMBER 16, 2021
 REVISIONS:

Central Missouri Professional Services, Inc.
 ENGINEERING - SURVEYING - MATERIALS TESTING
 2500 E. McCARTY
 JEFFERSON CITY, MISSOURI 65101
 (573) 634-9455
 (573) 634-8898
 Missouri State Certificate of Authority #001558



TANNER BRIDGE ROAD ALIGNMENT
 IMPROVEMENTS, PROJECT # 2022-601-1
 COLE COUNTY PUBLIC WORKS
 TANNER BRIDGE ROAD
 COLE COUNTY, MISSOURI

CMPS JOB No. 17-035
 DRN. BY: PPK
 CKD. BY: CFB

SCALE: NO SCALE

SHEET TITLE
TRAFFIC CONTROL PLAN
 SHEET NUMBER
10
 OF 11 SHEETS

