

Disclaimer
 This design concept is for preliminary discussion purposes only. It does not constitute approval nor a guarantee to provide any level of service to this location. This concept is based on available aerial imagery and does not consider matters which could impact feasibility, including without limitation utilities, environmental conditions, permitting, and property issues. Ultimate formal project design must meet union pacific's technical specifications for construction of industrial tracks.

UPRR Right-of-Way lines are approximate and are depicted from aerial imagery.

REV. #	BY	DATE	DESCRIPTION

- Ex. UPRR Track
- Prop. UPRR Track
- - - Remove UPRR Track
- - - Shift UPRR Track
- Ex. Ind. Track
- - - Prop. Ind. Track
- - - Remove Ind. Track
- Shift Ind. Track
- Future Ind. Track
- - - Prop. Leased Ind. Trk
- - - Ex. Leased Ind. Trk
- No RR Operations
- - - Right of Way
- Hand Throw Turnout
- Power Turnout
- Power Derail
- Hand Throw Derail
- Point of Curve
- Signal

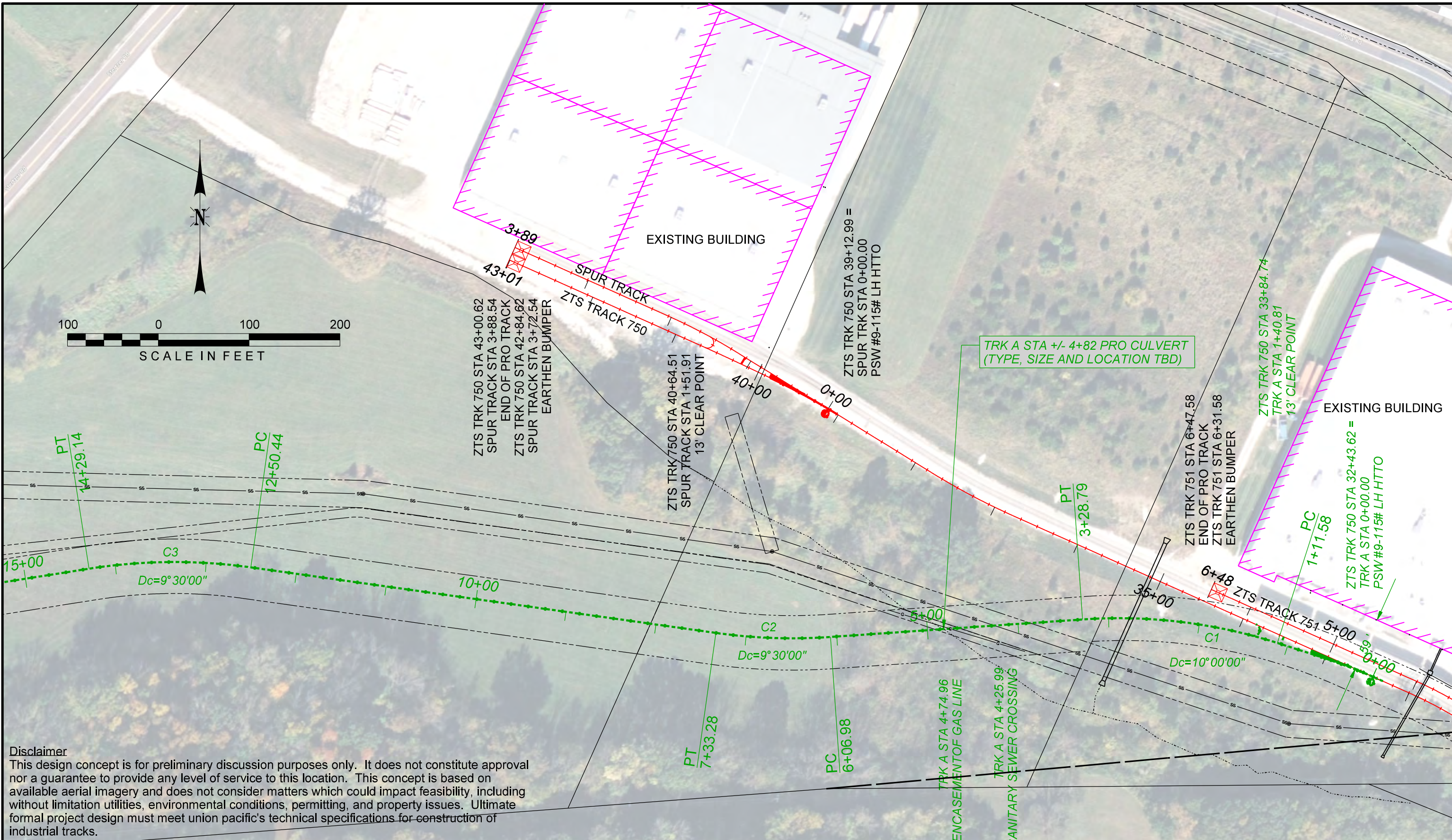
DESIGN NINE
 ENGINEERING SERVICES FOR RAILROADS AND INDUSTRY
 11166 TESSON FERRY ROAD, SUITE 100 ST. LOUIS, MO 63123-6966
 PHONE: (314) 729-7600 FAX: (314) 729-7610



FES #:	DOCUMENT TYPE: DEVELOPMENT CONCEPT
DRAWN BY: ADB	UNION PACIFIC RAILROAD For use in Agreement with: COLE COUNTY
CHECKED BY: KMS	
DATE: 11/8/2022	LOCATION & DESCRIPTION: JEFFERSON CITY, MO - JEFFERSON CITY SUB. MP 119.20 Trackage to Serve: COLE COUNTY
SHEET NUMBER: P002 of P005	SHEET TITLE: PLAN (2 OF 5)

Color tables: T:\Standards\CAD\Microstation_V8\Track\UPRR\tables\Color\UPRR.tbl
 T:\Standards\CAD\Microstation_V8\Track\UPRR\tables\Pen\UP-DesignNine.tbl
 11/8/2022 Central Missouri Professional Services\Cole County Transload Yard\Design\22064-1.dgn
 Per: aut, 11/8/2022

Color tables: T:\Standards-CAD\Microstation_V8\Track\UPRR\tables\Color\UPRR.tbl
 H:\Standards-CAD\Microstation_V8\Track\UPRR\tables\Pen\UP-Design\Pen.tbl
 S:\2022\CentralMissouri\Professional Services\Cole County Transload Yard\Design\22064-1.dgn
 11/8/2022
 7/8/2022



Disclaimer
 This design concept is for preliminary discussion purposes only. It does not constitute approval nor a guarantee to provide any level of service to this location. This concept is based on available aerial imagery and does not consider matters which could impact feasibility, including without limitation utilities, environmental conditions, permitting, and property issues. Ultimate formal project design must meet union pacific's technical specifications for construction of industrial tracks.

UPRR Right-of-Way lines are approximate and are depicted from aerial imagery.

REV. #	BY	DATE	DESCRIPTION

- | | | |
|-------------------|-----------------------|--------------------|
| Ex. UPRR Track | Shift Ind. Track | Hand Throw Turnout |
| Prop. UPRR Track | Future Ind. Track | Power Turnout |
| Remove UPRR Track | Prop. Leased Ind. Trk | Power Derail |
| Shift UPRR Track | Ex. Leased Ind. Trk | Hand Throw Derail |
| Ex. Ind. Track | No RR Operations | Point of Curve |
| Prop. Ind. Track | Right of Way | Signal |
| Remove Ind. Track | | |

DESIGN NINE
 ENGINEERING SERVICES FOR RAILROADS AND INDUSTRY
 11166 TESSON FERRY ROAD, SUITE 100 ST. LOUIS, MO 63123-6966
 PHONE: (314) 729-7600 FAX: (314) 729-7610



FES #:	DOCUMENT TYPE: DEVELOPMENT CONCEPT
DRAWN BY: ADB	UNION PACIFIC RAILROAD For use in Agreement with: COLE COUNTY
CHECKED BY: KMS	
DATE: 11/8/2022	LOCATION & DESCRIPTION: JEFFERSON CITY, MO - JEFFERSON CITY SUB. MP 119.20 Trackage to Serve: COLE COUNTY
SHEET NUMBER: P003 of P005	SHEET TITLE: PLAN (3 OF 5)



SCOPE OF WORK (PROPOSED TRACK ONLY)

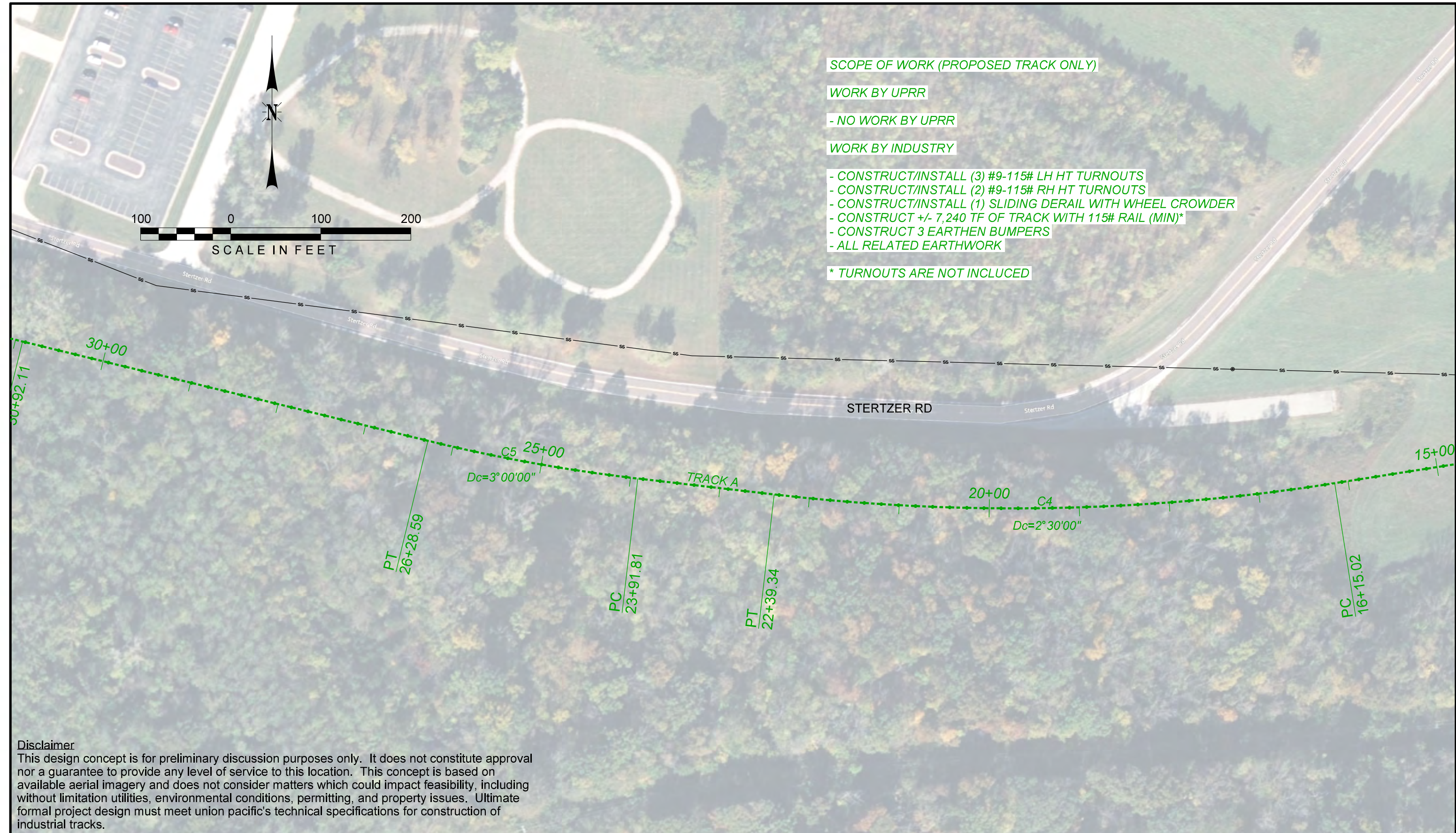
WORK BY UPRR

- NO WORK BY UPRR

WORK BY INDUSTRY

- CONSTRUCT/INSTALL (3) #9-115# LH HT TURNOUTS
- CONSTRUCT/INSTALL (2) #9-115# RH HT TURNOUTS
- CONSTRUCT/INSTALL (1) SLIDING DERAIL WITH WHEEL CROWDER
- CONSTRUCT +/- 7,240 TF OF TRACK WITH 115# RAIL (MIN)*
- CONSTRUCT 3 EARTHEN BUMPERS
- ALL RELATED EARTHWORK

* TURNOUTS ARE NOT INCLUDED



Disclaimer
 This design concept is for preliminary discussion purposes only. It does not constitute approval nor a guarantee to provide any level of service to this location. This concept is based on available aerial imagery and does not consider matters which could impact feasibility, including without limitation utilities, environmental conditions, permitting, and property issues. Ultimate formal project design must meet union pacific's technical specifications for construction of industrial tracks.

UPRR Right-of-Way lines are approximate and are depicted from aerial imagery.

REV. #	BY	DATE	DESCRIPTION

Ex. UPRR Track	Shift Ind. Track	Hand Throw Turnout
Prop. UPRR Track	Future Ind. Track	Power Turnout
Remove UPRR Track	Prop. Leased Ind. Trk	Power Derail
Shift UPRR Track	Ex. Leased Ind. Trk	Hand Throw Derail
Ex. Ind. Track	No RR Operations	Point of Curve
Prop. Ind. Track	Right of Way	Signal
Remove Ind. Track		

DESIGN NINE
 ENGINEERING SERVICES FOR RAILROADS AND INDUSTRY
 11166 TESSON FERRY ROAD, SUITE 100 ST. LOUIS, MO 63123-6966
 PHONE: (314) 729-7600 FAX: (314) 729-7610

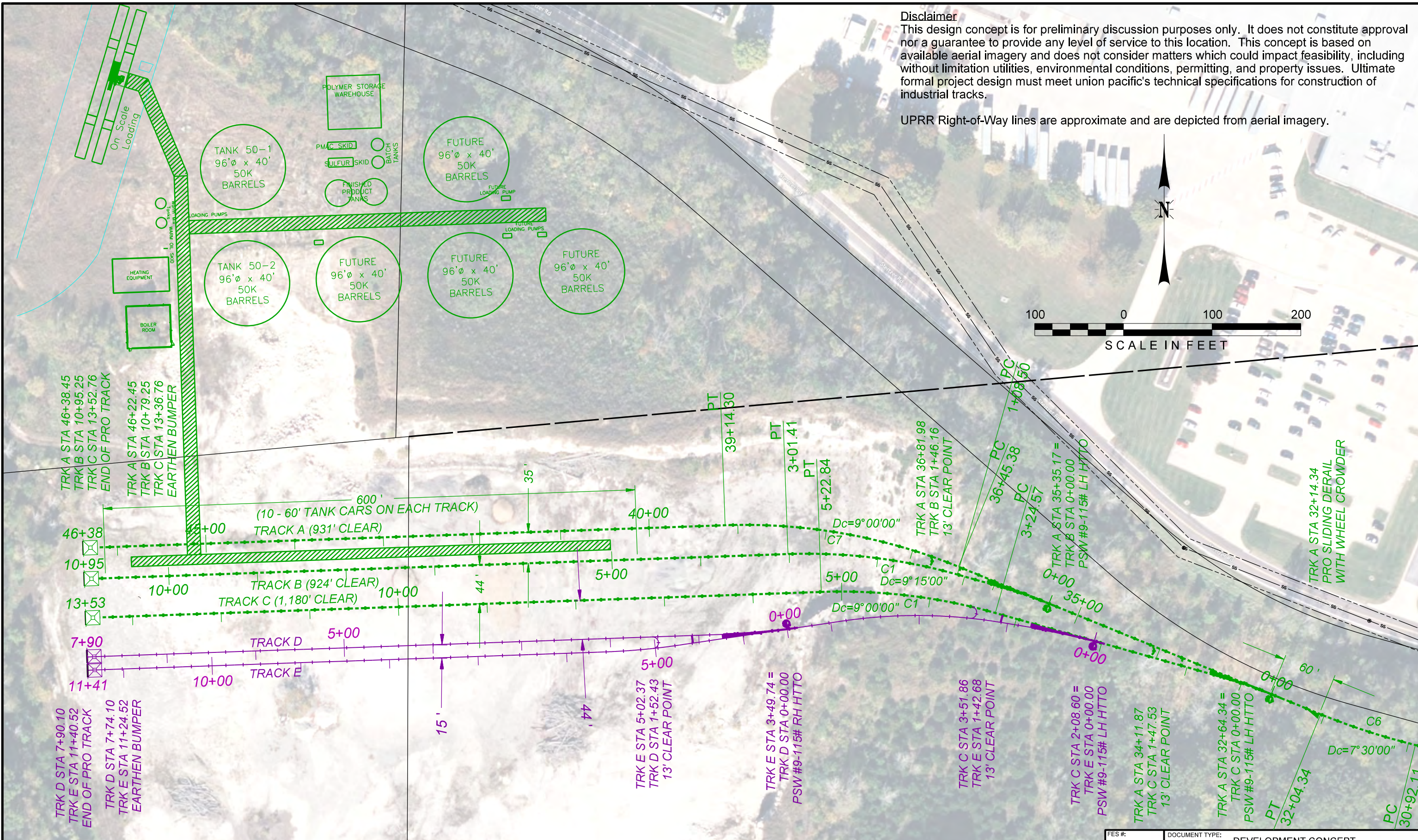
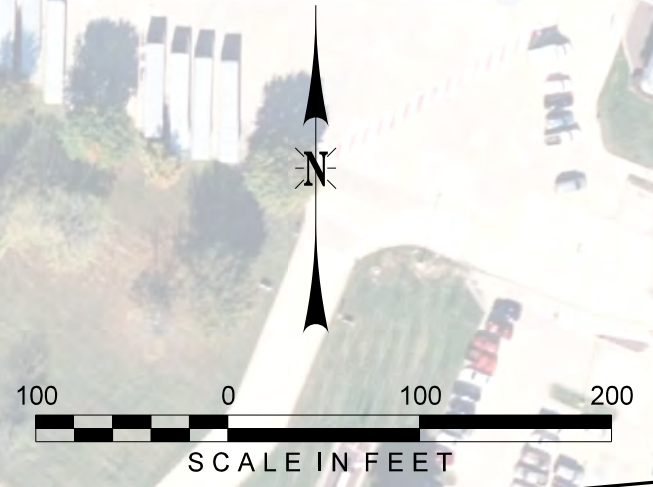


FES #:	DOCUMENT TYPE: DEVELOPMENT CONCEPT
DRAWN BY: ADB	UNION PACIFIC RAILROAD For use in Agreement with: COLE COUNTY
CHECKED BY: KMS	
DATE: 11/8/2022	LOCATION & DESCRIPTION: JEFFERSON CITY, MO - JEFFERSON CITY SUB. MP 119.20 Trackage to Serve: COLE COUNTY
SHEET NUMBER: P004 of P005	SHEET TITLE: PLAN (4 OF 5)

Color tables: T:\Standards-CAD\Microstation_V8\Track\UPRR\tables\Color\UPRR.tbl
 H:\Standards-CAD\Microstation_V8\Track\UPRR\tables\Pen\UP-Design\Nrc.tbl
 S:\2022\CentralMissouri\Professional Services\Cole County Transload Yard\Design\22064-1.dgn
 11/8/2022
 per ault

Disclaimer
 This design concept is for preliminary discussion purposes only. It does not constitute approval nor a guarantee to provide any level of service to this location. This concept is based on available aerial imagery and does not consider matters which could impact feasibility, including without limitation utilities, environmental conditions, permitting, and property issues. Ultimate formal project design must meet union pacific's technical specifications for construction of industrial tracks.

UPRR Right-of-Way lines are approximate and are depicted from aerial imagery.

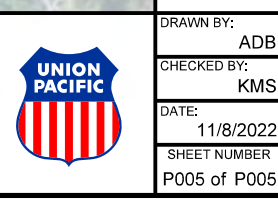


Color tables: T:\Standards-CAD\Microstation_V8\Track\UPRR\tables\Color\UPRR.tbl
 H:\Standards-CAD\Microstation_V8\Track\UPRR\tables\Pen\UP-Design\Nrc.tbl
 S:\2022\CentralMissouri\Professional Services\Cole County Transload Yard\Design\22064-1.dgn
 7/8/2022

REV. #	BY	DATE	DESCRIPTION

Ex. UPRR Track	Shift Ind. Track	Hand Throw Turnout
Prop. UPRR Track	Future Ind. Track	Power Turnout
Remove UPRR Track	Prop. Leased Ind. Trk	Power Derail
Shift UPRR Track	Ex. Leased Ind. Trk	Hand Throw Derail
Ex. Ind. Track	No RR Operations	Point of Curve
Prop. Ind. Track	Right of Way	Signal
Remove Ind. Track		

DESIGN NINE
 ENGINEERING SERVICES FOR RAILROADS AND INDUSTRY
 11166 TESSON FERRY ROAD, SUITE 100 ST. LOUIS, MO 63123-6966
 PHONE: (314) 729-7600 FAX: (314) 729-7610



FES #:	DOCUMENT TYPE: DEVELOPMENT CONCEPT
DRAWN BY: ADB	UNION PACIFIC RAILROAD For use in Agreement with: COLE COUNTY
CHECKED BY: KMS	
DATE: 11/8/2022	LOCATION & DESCRIPTION: JEFFERSON CITY, MO - JEFFERSON CITY SUB. MP 119.20 Trackage to Serve: COLE COUNTY
SHEET NUMBER: P005 of P005	SHEET TITLE: PLAN (5 OF 5)