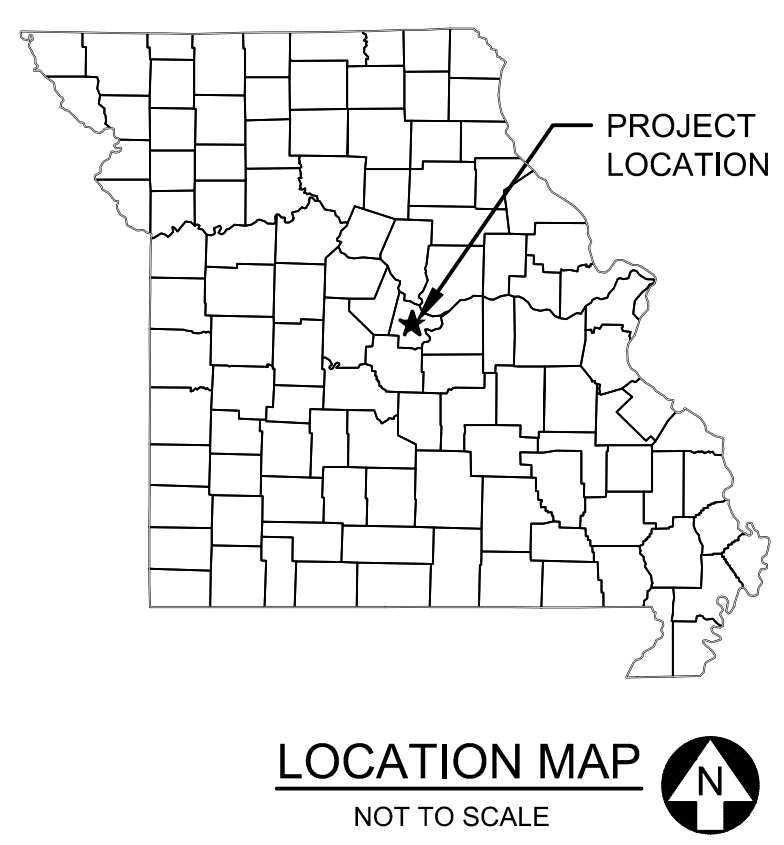


APACHE FLATS SEDIMENT REMOVAL

COLE COUNTY PUBLIC WORKS

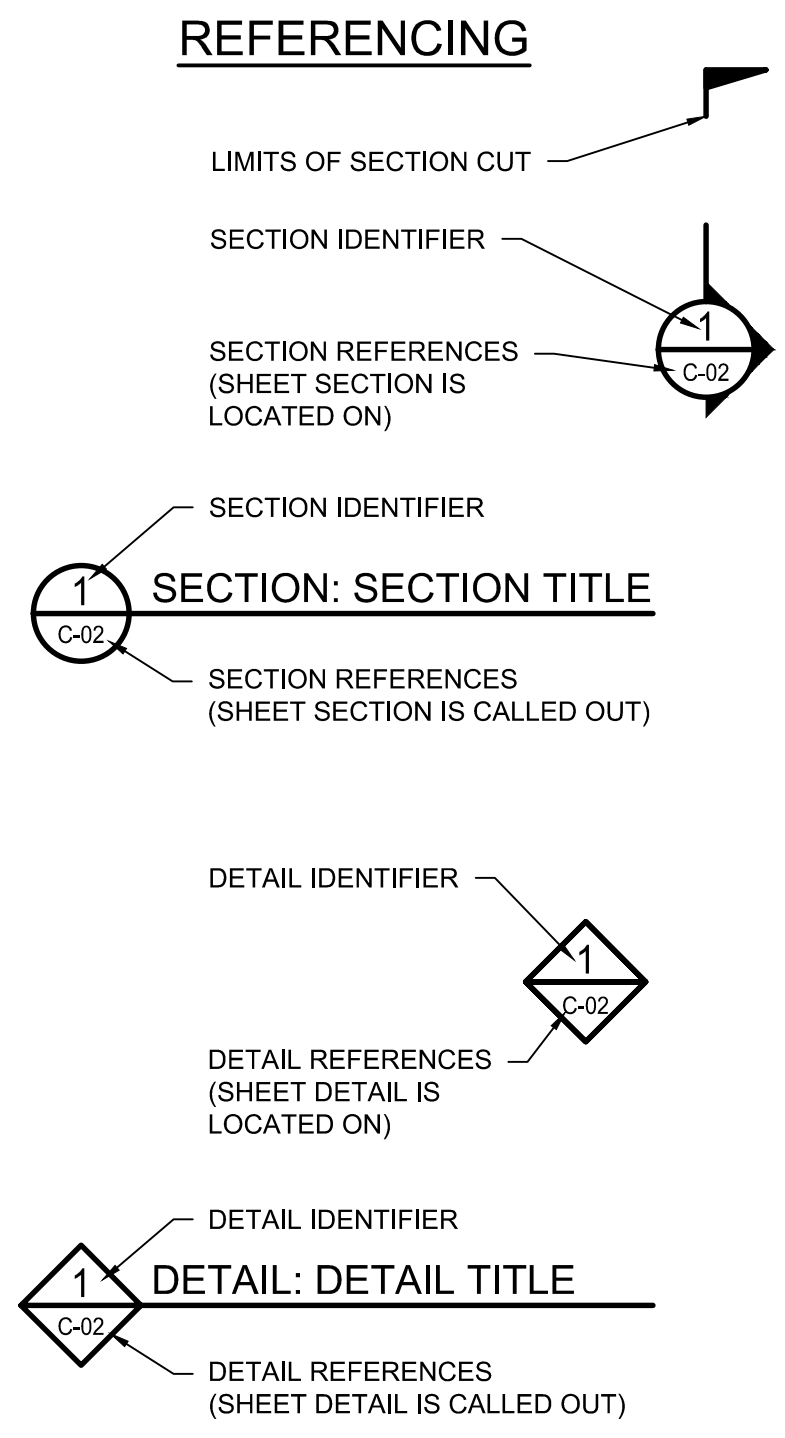
COLE COUNTY, MO



UTILITY NOTES

THE LOCATIONS, SIZES, AND MATERIAL TYPES OF UNDERGROUND UTILITIES INDICATED ON THE PLAT, NOT VISIBLE OR APPARENT FROM THE SURFACE, ARE SHOWN IN THEIR APPROXIMATE LOCATIONS FROM A MISSOURI ONE CALL SYSTEM LOCATE, OR UTILITY COMPANY RECORDS AND WERE NOT VERIFIED IN THE FIELD. UNDERGROUND UTILITY SERVICES TO BUILDINGS WERE NOT LOCATED.

WATER COLE COUNTY PUBLIC WATER SUPPLY DISTRICT NO.1 4346 RAINBOW DRIVE JEFFERSON CITY, MISSOURI 65109 CONTACT: RUTH WINTERS 573-893-2848 AS SHOWN	TELECOMMUNICATIONS BRIGHTSPEED 625 CHERRY STREET COLUMBIA, MISSOURI 65201 CONTACT: 573-681-2503 AS SHOWN
ELECTRIC AMEREN MISSOURI MADISON STREET JEFFERSON CITY, MISSOURI 65101 CONTACT: (800) 552-7583 AS SHOWN	SOCKET TELECOM 2703 CLARK LANE, COLUMBIA, MISSOURI 65202 CONTACT: (800) 762-5383 AS SHOWN
THREE RIVERS ELECTRIC COOPERATIVE 4800 STATE ROUTE E JEFFERSON CITY, MISSOURI 65101 CONTACT: 573-644-9000 AS SHOWN	SANITARY SEWER CITY OF JEFFERSON DEPARTMENT OF PUBLIC WORKS 320 EAST McCARTY STREET JEFFERSON CITY, MISSOURI 65101 CONTACT: ERIC SEAMAN 573-634-6410 AS SHOWN
GAS AMEREN MISSOURI MADISON STREET JEFFERSON CITY, MISSOURI 65101 CONTACT: (800) 552-7583 AS SHOWN	STORM SEWER COLE COUNTY PUBLIC WORKS 5055 MONTICELLO RD JEFFERSON CITY, MO 65109



ABBREVIATIONS AND SYMBOLS

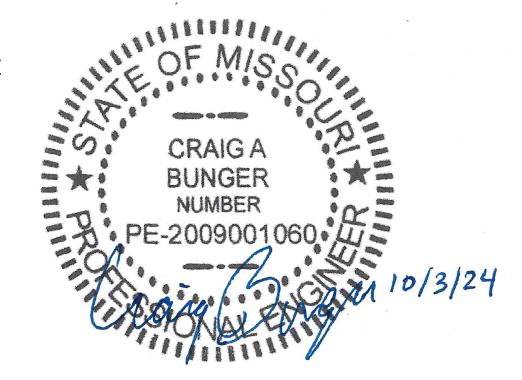
APPROX	APPROXIMATE
ASCE	AMERICAN SOCIETY OF CIVIL ENGINEERS
ASTM	AMERICAN SOCIETY FOR TESTING AND MATERIALS
CONC	CONCRETE
DIP	DUCTILE IRON PIPE
EL	ELEVATION
F.F.E.	FINISHED FLOOR ELEVATION
HARN	HIGH ACCURACY REFERENCE NETWORK
ID	INSIDE DIAMETER
IE	INVERT ELEVATION
MAX	MAXIMUM
MIN	MINIMUM
NAVD	NATIONAL AMERICAN VERTICAL DATUM
NGVD	NATIONAL GEODETIC VERTICAL DATUM
NO.	NUMBER
OC	ON CENTER
PVC	POLYVINYL CHLORIDE
ROW	RIGHT-OF-WAY
TBD	TO BE DETERMINED
TYP	TYPICAL
@	AT
Ø	DIAMETER

NOTES:

1. COMPLY WITH ALL APPLICABLE LOCAL, STATE, AND FEDERAL CODES, PERMITS, AND REGULATIONS.
2. VERIFY ALL QUANTITIES, GRADES, AND DIMENSIONS.
3. TOPOGRAPHIC INFORMATION BASED ON SITE SURVEY CONDUCTED BY ENGINEERING SURVEYS & SERVICES DATED MAY 17, 2024. SURVEY PERFORMED WITH VERTICAL DATUM OF NAVD 88 (FEET).
4. FIELD-LOCATE ALL SITE UTILITIES (PRIVATE AND PUBLIC) PRIOR TO STARTING THE WORK. ALL UTILITIES SHOWN ON THE PLANS ARE APPROXIMATE. ANY UTILITIES DAMAGED BY CONTRACTOR SHALL BE REPAIRED TO THE SATISFACTION OF UTILITY OWNER AT CONTRACTOR'S COST.

SHEET INDEX

SHEET	TITLE
G-01	COVER SHEET, INDEX AND VICINITY MAP
C-01	EXISTING CONDITIONS
C-02	PROPOSED CONDITIONS
C-03	SECTIONS
C-04	PROFILE AND TECHNICAL SPECIFICATIONS



CADD USER: BRIAN K. WIEBE FILE: O:\DESIGN\25271046\00\APACHE FLATS SEDIMENT REMOVAL\25271046_AFS_G01.DWG PLOT SCALE: 1:1 PLOT DATE: 10/3/2024 8:28 AM

PROJECT DATUM:
HORIZONTAL: NAD83 MISSOURI STATE PLANE, CENTRAL ZONE, US FOOT
VERTICAL: NAVD 88



NO.	BY	CHK.	APP.	DATE	REVISION DESCRIPTION
0	BKW	EBG	CAB	10/03/2024	ISSUED FOR BID

CLIENT	PERMIT	BID	CONSTRUCTION	RECORD

BARR Engineering Co.
1001 DIAMOND RIDGE SUITE 1100
JEFFERSON CITY, MO 65109

Project Office:
BARR ENGINEERING CO.
1001 DIAMOND RIDGE SUITE 1100
JEFFERSON CITY, MO 65109

Corporate Headquarters:
Minneapolis, Minnesota
Ph: 1-888-324-3933
Ph: (673) 638-5001
Ph: 1-800-632-2277
www.barr.com

Scale	AS SHOWN
Date	05/29/2024
Drawn	BKW2
Checked	EBG
Designed	CAB
Approved	CAB

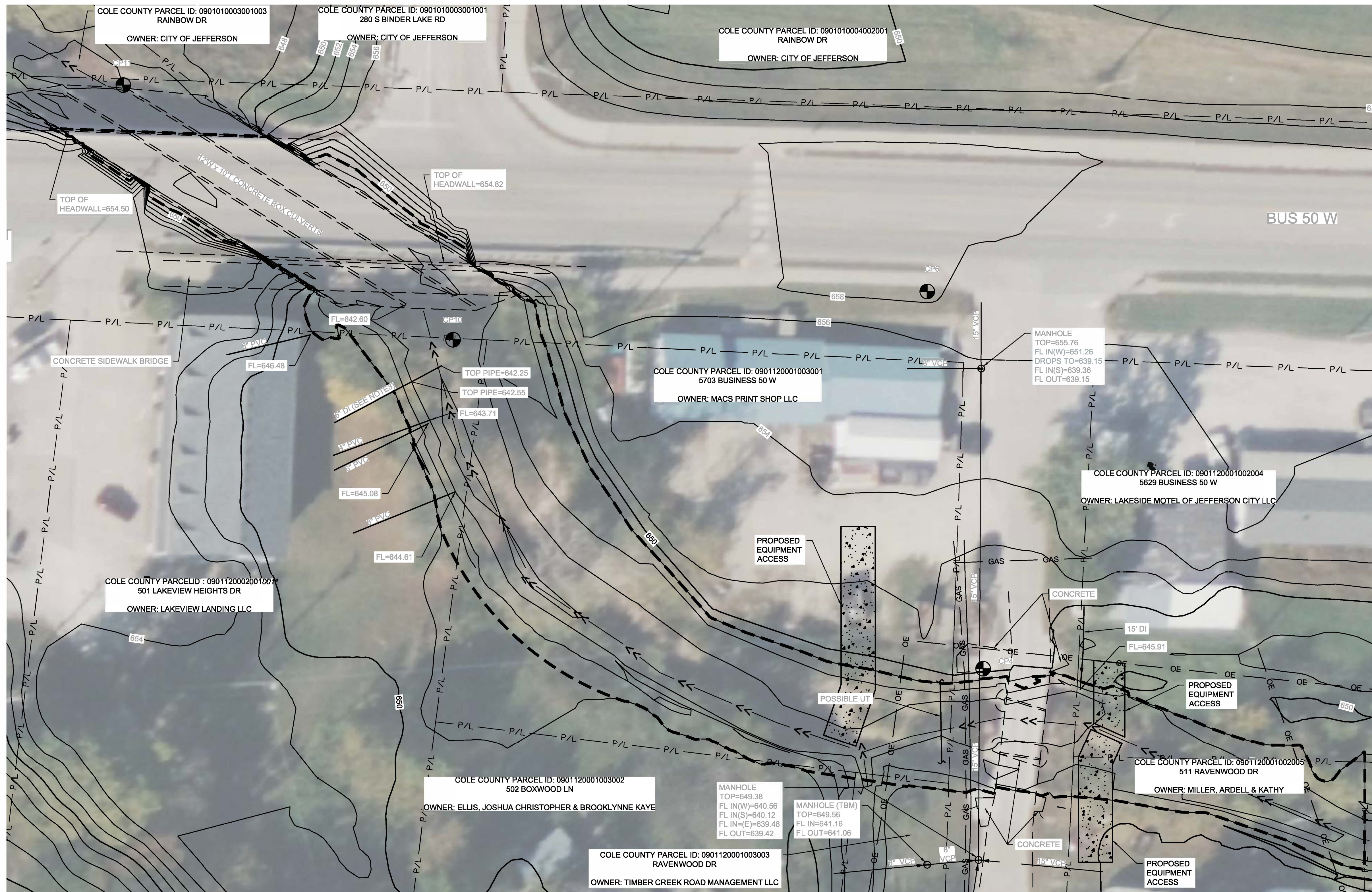
COLE COUNTY PUBLIC WORKS

APACHE FLATS SEDIMENT REMOVAL

COVER SHEET, INDEX AND VICINITY MAP

BARR PROJECT No. 25271046.00	
CLIENT PROJECT No.	
DWG. No. G-01	REV. No. 0

CADD USER: BRIAN K. WEBER; FILE: C:\DESIGN\2271046_APACHE FLATS SEDIMENT REMOVAL\2271046_AFS_C01.DWG; PLOT SCALE: 1:1; PLOT DATE: 10/29/2024 8:27 AM



LEGEND - PLAN

	PROPERTY LINE
	EXISTING MAJOR CONTOUR
	EXISTING MINOR CONTOUR
	EXISTING CONCRETE
	EXISTING RIPRAP
	EXISTING POWER POLE
	EXISTING LIGHT POLE
	EXISTING MANHOLE
	EXISTING SANITARY MANHOLE
	EXISTING STORM MANHOLE
	EXISTING STORM
	EXISTING GAS
	EXISTING SANITARY
	EXISTING OVERHEAD ELECTRIC
	EXISTING FLOW LINE
	PROPOSED EQUIPMENT ACCESS LOCATION
	SURVEY CONTROL POINT
	ESTIMATED ORDINARY HIGH WATER MARK

- GENERAL NOTES:**
- CONTOURS, UTILITIES, STRUCTURES, AND OTHER FEATURES SHOWN ON THIS DRAWING ARE EXISTING WITH THE EXCEPTION OF PROPOSED EQUIPMENT ACCESS.
 - CONTRACTOR SHALL COORDINATE WITH COLE COUNTY PUBLIC WORKS TO CONFIRM APPROVED EASEMENTS AND PROPOSED ACCESS LOCATIONS PRIOR TO BEGINNING WORK.
 - 6" DIAMETER DUCTILE IRON PIPE CROSSING THE DRAINAGE IS EXPOSED AT THE LOCATIONS AND ELEVATIONS SHOWN ON THE PLAN. CONTRACTOR SHALL PROTECT THIS PIPE AND NO SEDIMENT SHALL BE REMOVED WITHIN 10 FEET OF THIS PIPE. CONTRACTOR SHALL POT HOLE THIS PIPE AS REQUIRED TO CONFIRM ALIGNMENT AND PROFILE IN THE WORK AREA.

BENCH MARK

BM	- MISSOURI DEPARTMENT OF TRANSPORTATION VRS NETWORK.
TBM	- CHISELED SQUARE ON NORTH RIM OF SANITARY MANHOLE LOCATED 20 FEET WEST OF WEST EDGE OF RAVENWOOD DRIVE

ELEVATION = 649.54

SURVEY CONTROL POINTS

MODIFIED STATE PLANE COORDINATES
NAD 83, MISSOURI CENTRAL ZONE, NAVD 88, U.S. SURVEY FEET

POINT #	NORTH	EAST	ELEVATION	DESCRIPTION
CP4	1001339.06	1697040.43	650.60	DRILLHOLE
CP6	1001477.21	1697019.96	658.47	DRILLHOLE
CP7	1001317.51	1697389.89	656.58	DRILLHOLE
CP10	1001459.55	1696846.28	643.35	DRILLHOLE
CP11	1001552.90	1696725.48	642.08	DRILLHOLE

- NOTES:**
- ACCURATE ELEVATIONS HAVE BEEN SURVEYED AS SHOWN. CONTOURS SHOWN ARE INTERPOLATED BASED ON THESE ELEVATIONS.



1 PLAN: EXISTING CONDITIONS

0 40 80
1"=40' SCALE IN FEET

PROJECT DATUM:
HORIZONTAL: NAD83 MISSOURI STATE PLANE, CENTRAL ZONE, US FOOT
VERTICAL: NAVD 88

NO.	BY	CHK.	APP.	DATE	REVISION DESCRIPTION
0	BKW	EBG	CAB	10/03/2024	ISSUED FOR BID

CLIENT	PERMIT	BID	CONSTRUCTION	RECORD
		10/03/2024		

BARR Engineering Co.
4300 MARKETPOINTE DRIVE SUITE 200
MINNEAPOLIS, MN 55435

Project Office:
BARR ENGINEERING CO.
4300 MARKETPOINTE DRIVE SUITE 200
MINNEAPOLIS, MN 55435

Corporate Headquarters:
Minneapolis, Minnesota
Ph: 1-800-632-2277
Ph: (952) 832-2601
www.barr.com

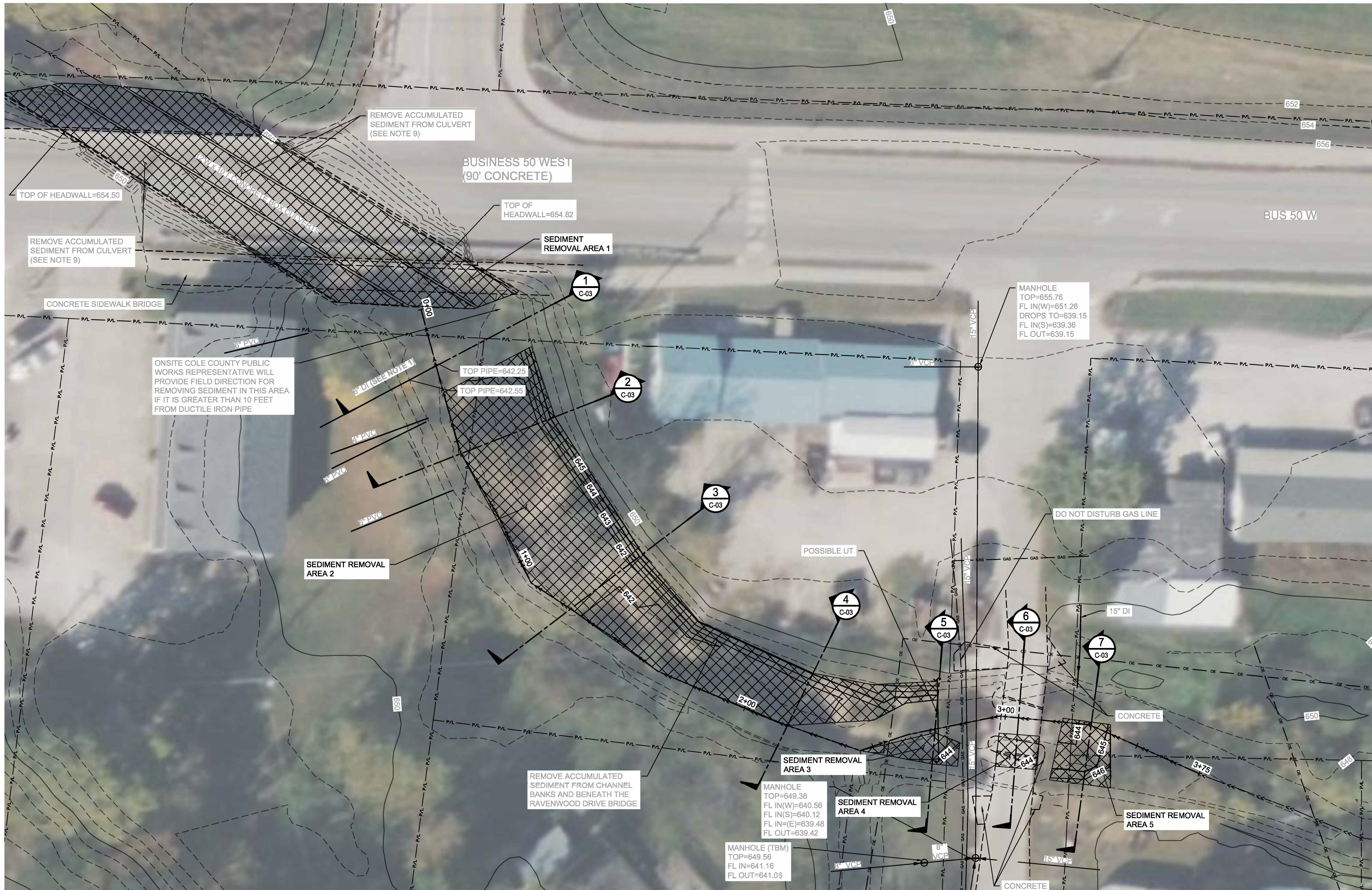
Scale	1" = 40'
Date	5/29/2024
Drawn	BKW2
Checked	EBG
Designed	CAB
Approved	CAB

COLE COUNTY PUBLIC WORKS

APACHE FLATS SEDIMENT REMOVAL

EXISTING CONDITIONS
PLAN VIEW

BARR PROJECT No.	25271046.00
CLIENT PROJECT No.	
DWG. No.	C-01
REV. No.	0

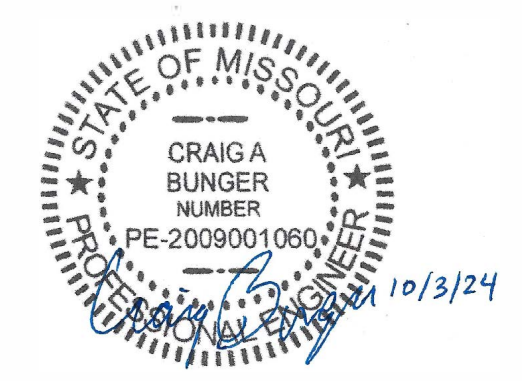
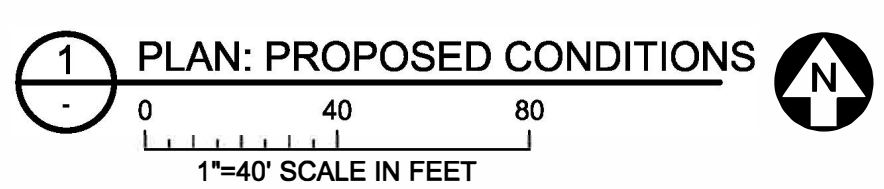


LEGEND - PLAN

— P/L — P/L — P/L —	PROPERTY LINE
— 1380 —	EXISTING MAJOR CONTOUR
- - - 1379 - - -	EXISTING MINOR CONTOUR
— 1380 —	PROPOSED MAJOR CONTOUR
- - - 1379 - - -	PROPOSED MINOR CONTOUR
[Pattern]	EXISTING CONCRETE
[Pattern]	EXISTING RIPRAP
⊗	EXISTING POWER POLE
⊙	EXISTING LIGHT POLE
(MH)	EXISTING MANHOLE
(SAN)	EXISTING SANITARY MANHOLE
(ST)	EXISTING STORM MANHOLE
— ST — ST — ST —	EXISTING STORM
— GAS — GAS — GAS —	EXISTING GAS
— SAN — SAN — SAN —	EXISTING SANITARY
— OE — OE — OE —	EXISTING OVERHEAD ELECTRIC
[Pattern]	REMOVE ACCUMULATED SEDIMENT

- GENERAL NOTES:**
- 6" DIAMETER DUCTILE IRON PIPE CROSSING THE DRAINAGE IS EXPOSED AT THE LOCATIONS AND ELEVATIONS SHOWN ON THE PLAN. CONTRACTOR SHALL PROTECT THIS PIPE AND NO SEDIMENT SHALL BE REMOVED WITHIN 10 FEET OF THIS PIPE. CONTRACTOR SHALL POT HOLE THIS PIPE AS REQUIRED TO CONFIRM ALIGNMENT AND PROFILE IN THE WORK AREA.
 - SEDIMENT REMOVAL AREAS SHOWN ARE APPROXIMATE AND ACTUAL SEDIMENT REMOVAL BOUNDARIES WILL BE DETERMINED USING INSTRUCTION FROM ON-SITE COLE COUNTY PUBLIC WORKS REPRESENTATIVE.

SEDIMENT REMOVAL	
AREA	CUT VOLUME (CY)
SEDIMENT REMOVAL AREA 1	529
SEDIMENT REMOVAL AREA 2	446
SEDIMENT REMOVAL AREA 3	7
SEDIMENT REMOVAL AREA 4	5
SEDIMENT REMOVAL AREA 5	11
TOTAL	998



PROJECT DATUM:
 HORIZONTAL: NAD83 MISSOURI STATE PLANE, CENTRAL ZONE, US FOOT
 VERTICAL: NAVD 88

NO.	BY	CHK.	APP.	DATE	REVISION DESCRIPTION
0	BKW	EBG	CAB	10/03/2024	ISSUED FOR BID

CLIENT	PROJECT	DATE
P.M.I.T.	1001 DIAMOND RIDGE SUITE 1100	10/03/2024

BARR Engineering Co.
 Project Office: BARR ENGINEERING CO., 1001 DIAMOND RIDGE SUITE 1100, JEFFERSON CITY, MO 65109
 Corporate Headquarters: Minneapolis, Minnesota
 Phone: 1-888-324-3933, Fax: (673) 638-5001, www.barr.com

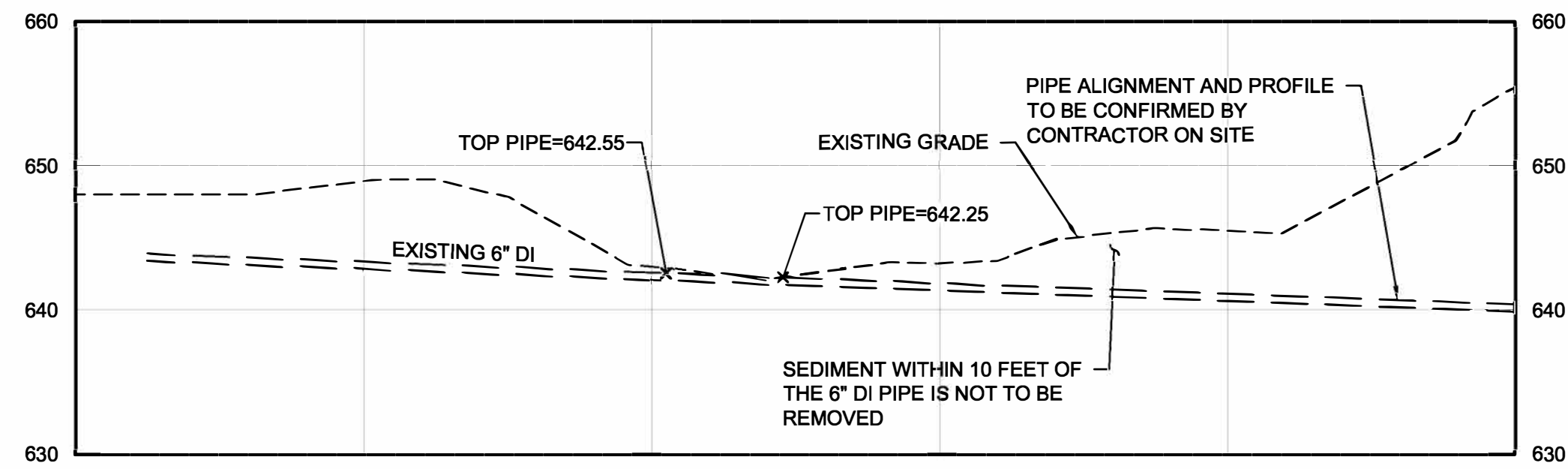
Scale	Date	Drawn	Checked	Designed	Approved
1" = 40'	5/29/2024	BKW2	EBG	CAB	CAB

COLE COUNTY PUBLIC WORKS

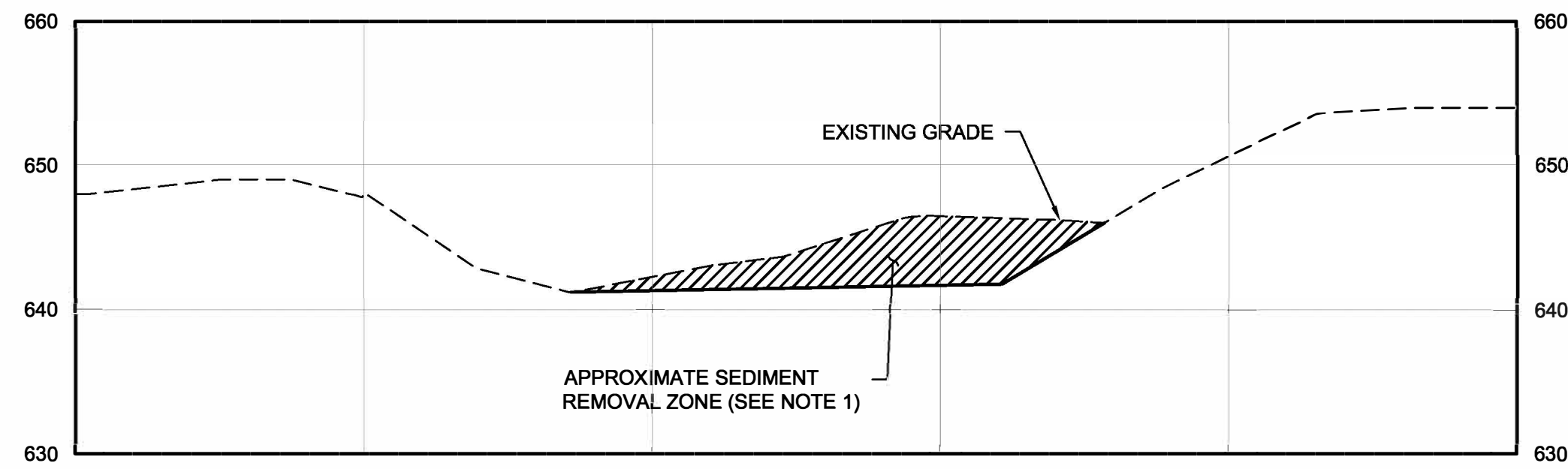
APACHE FLATS SEDIMENT REMOVAL
 PROPOSED CONDITIONS
 PLAN VIEW

BARR PROJECT No. 25271046.00
CLIENT PROJECT No.
DWG. No. C-02
REV. No. 0

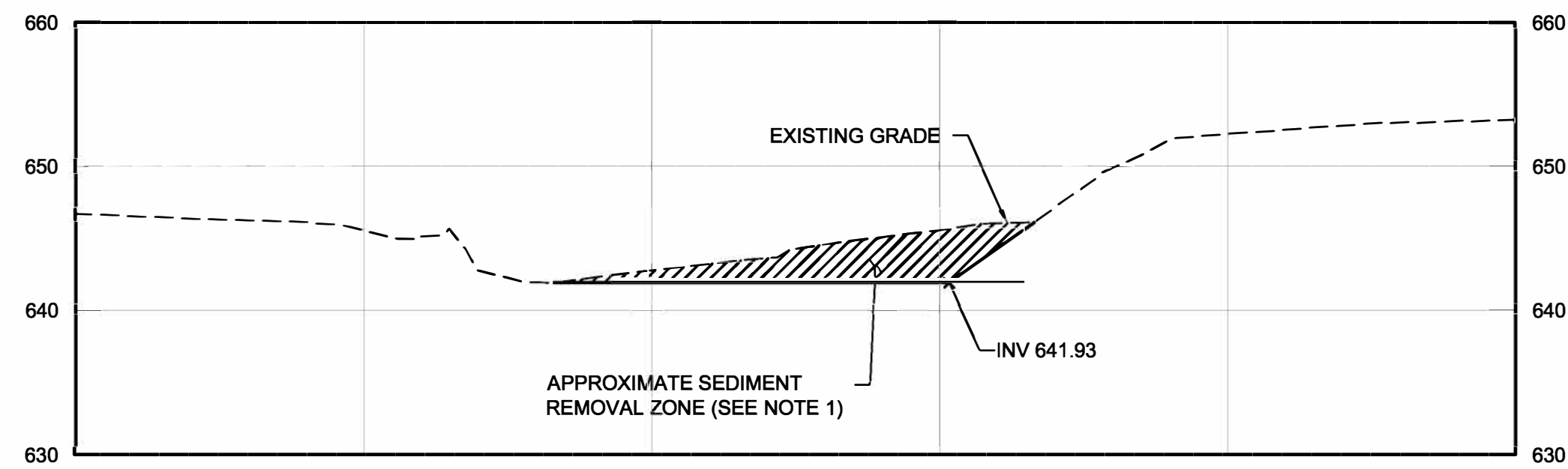
CADD USER: BRIAN K. WIEBE FILE: C:\DESIGN\25271046.00\APACHE FLATS SEDIMENT REMOVAL\25271046_AFS_C02.DWG PLOT SCALE: 1:1 PLOT DATE: 10/03/2024 8:27 AM



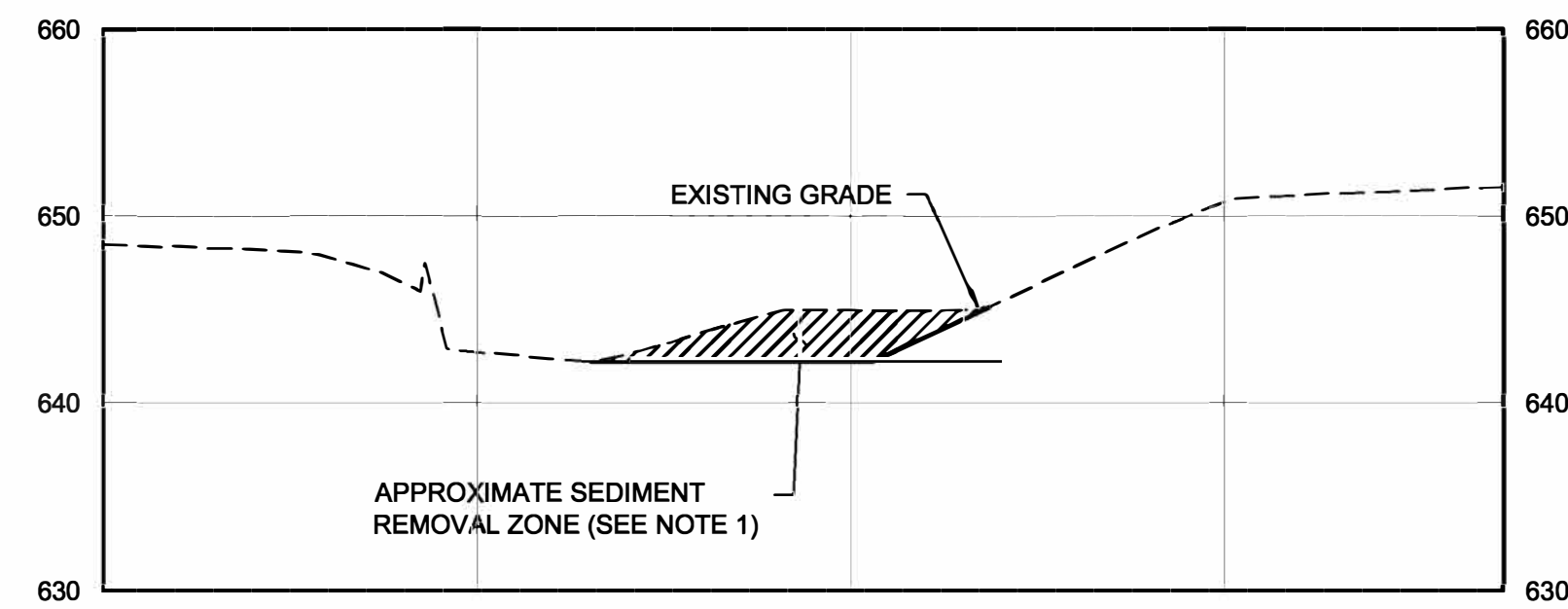
SECTION 1
SCALE IN FEET



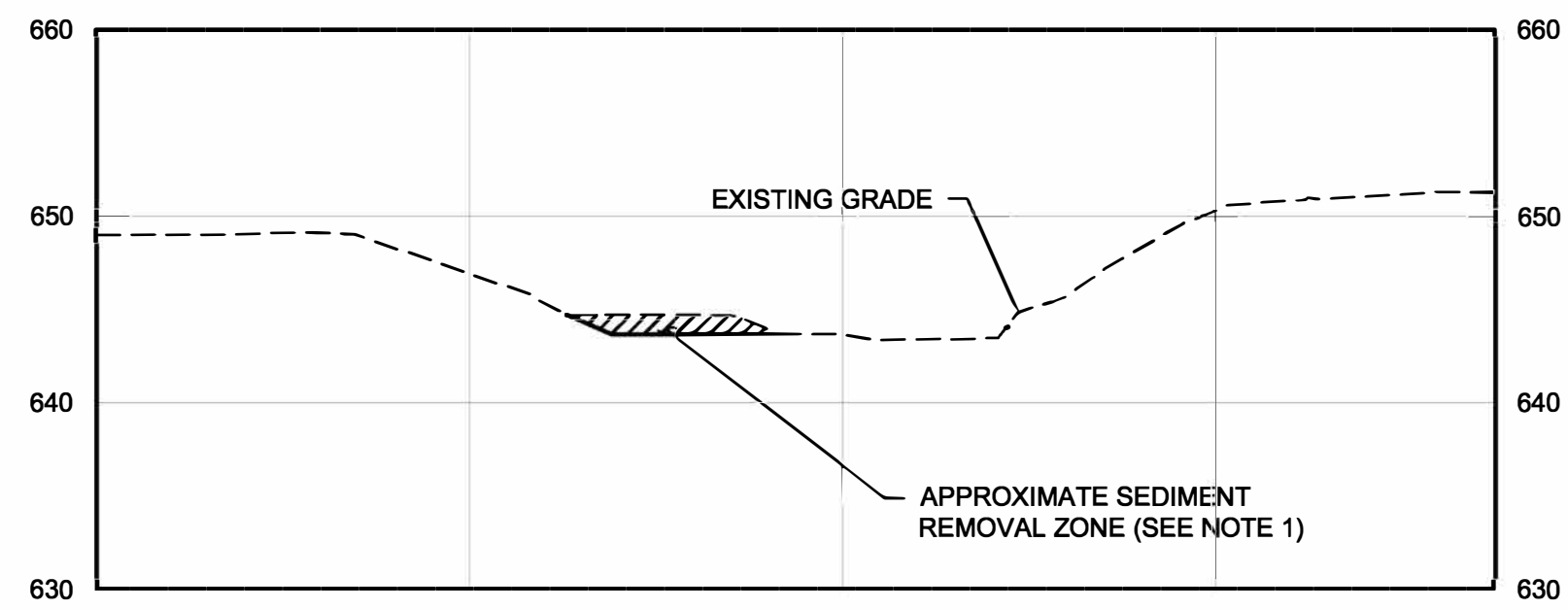
SECTION 2
SCALE IN FEET



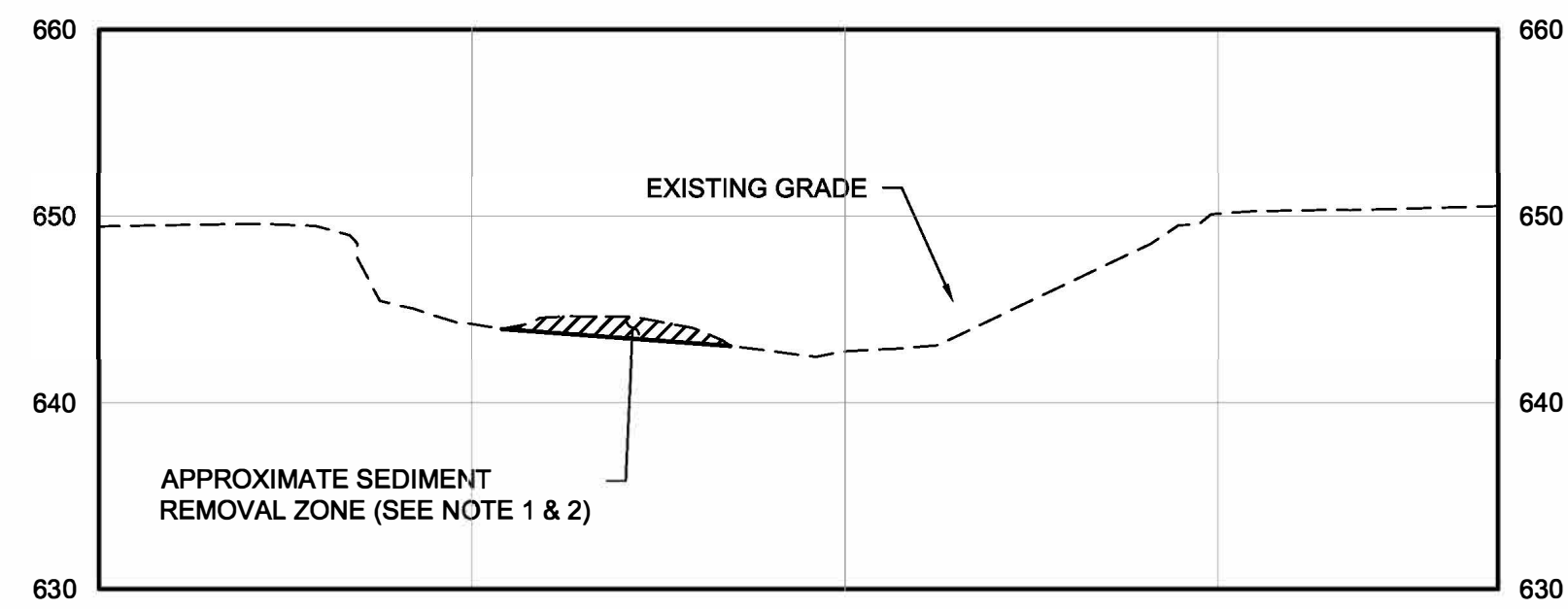
SECTION 3
SCALE IN FEET



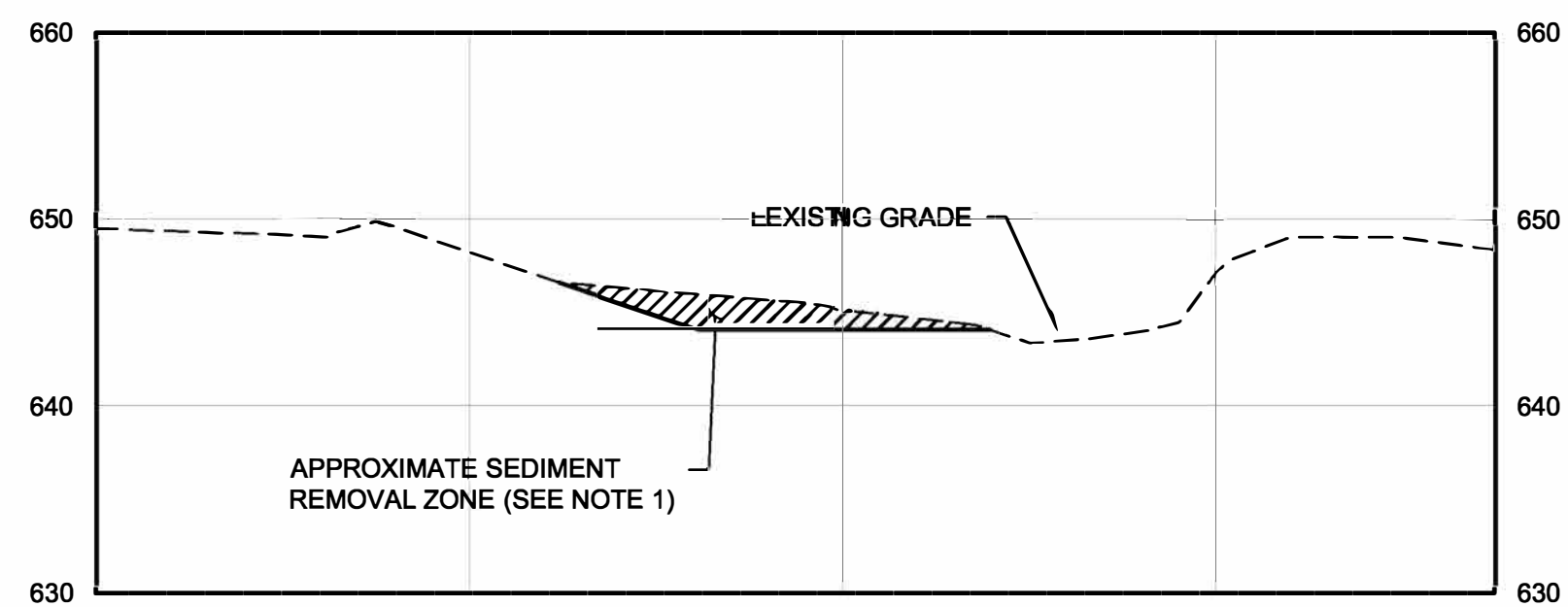
SECTION 4
SCALE IN FEET



SECTION 5
SCALE IN FEET

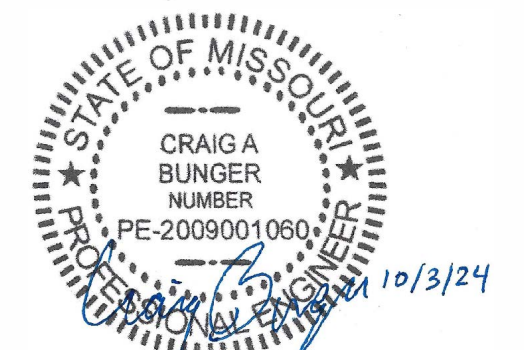


SECTION 6
SCALE IN FEET



SECTION 7
SCALE IN FEET

- NOTES:**
1. SEDIMENT REMOVAL AREAS SHOWN ARE APPROXIMATE AND ACTUAL SEDIMENT REMOVAL BOUNDARIES WILL BE DETERMINED USING INSTRUCTION FROM ONSITE COLE COUNTY PUBLIC WORKS REPRESENTATIVE.
 2. ADDITIONAL SEDIMENT MAY BE REMOVED BETWEEN RAVENWOOD DRIVE BRIDGE SUPPORTS AS DIRECTED BY ONSITE COLE COUNTY PUBLIC WORKS REPRESENTATIVE.



PROJECT DATUM:
HORIZONTAL: NAD83 MISSOURI STATE PLANE, CENTRAL ZONE, US FOOT
VERTICAL: NAVD 88

NO.	BY	CHK.	APP.	DATE	REVISION DESCRIPTION
0	BKW2	EBG	CAB	10/03/2024	ISSUED FOR BID

CLIENT	PERMIT	BID	CONSTRUCTION	RECORD	RELEASED TO/FOR	DATE RELEASED

BARR Engineering Co.
Project Office:
BARR ENGINEERING CO.
1001 DIAMOND RIDGE
SUITE 1100
JEFFERSON CITY, MO 65109
Corporate Headquarters:
Minneapolis, Minnesota
Ph: 1-888-324-3933
Ph: (612) 638-5001
Ph: 1-800-632-2277

Scale	AS SHOWN
Date	5/29/2024
Drawn	BKW2
Checked	EBG
Designed	CAB
Approved	CAB

COLE COUNTY PUBLIC WORKS

APACHE FLATS SEDIMENT REMOVAL

BARR PROJECT No.
25271046.00

CLIENT PROJECT No.

SECTIONS

DWG. No. C-03
REV. No. 0

CADD USER: BRIAN K. WIEBE FILE: C:\DESIGN\25271046_00\APACHE FLATS SEDIMENT REMOVAL\25271046_AFS_C03.DWG PLOT SCALE: 1:1 PLOT DATE: 10/03/2024 8:27 AM

